

HUME CITY COUNCIL **OPEN SPACE STRATEGY** DRAFT 2024



ACKNOWLEDGEMENT OF COUNTRY

Hume City Council recognises the rich Aboriginal heritage within the municipality and acknowledges the Wurundjeri Woi-wurrung as the Traditional Custodians of this land.

Council embraces Aboriginal and Torres Strait Islander living cultures as a vital part of Australia's identity and recognises, celebrates and pays respect to the existing family members of the Wurundjeri Woi-wurrung and to Elders past and present.

EXECUTIVE SUMMARY

Hume Open Space Strategy 2024

The City of Hume enjoys over 3,886ha of open space covering 7% of the municipality.

Much of the open space is connected along one of Hume's many waterways, providing extensive opportunities for walking in nature, enjoying scenic views and protecting biodiversity on the traditional lands of the Wurundjeri Woi-wurrung people.

With over 3,002ha of open space available to be enjoyed by the public, Hume has 6.5ha per 1,000 people which is similar to other growth areas in Melbourne.

This includes multiple expansive regional parks including Woodlands Historic Park, Greenvale Reservoir, Jacksons Creek biik wurrdha Regional Parklands, marram baba Merri Creek Regional Parklands, and Mt Ridley Nature Conservation Reserve. Hume is also home to 26 waterways, 12 with near continuous public access.

Across Hume, there are 588 reserves and 440 walkways providing a range of visitor experiences including play, sport, picnics, events, and nature and cultural connections. Council manages all but 26 reserves.

The following vision continues this commitment *Hume is home to a high-quality open space network supporting the health and wellbeing of our diverse community and celebrating the waterways, natural values and Wurundjeri Woi-wurrung cultural values of our landscape.*

This Open Space Strategy applies the Protect-Optimise-Grow framework set out in Victoria's Open Space for Everyone Strategy.



Today's challenge is to protect and grow our open spaces, waterways, environment, cultural heritage and visitor experiences so they can be enjoyed for generations to come.

The City of Hume will grow by more than 130,000 people in the next 20 years. We are planning for new housing, and alongside this we need open spaces as we no longer have the large backyards of previous years.

We know some suburbs have less open space than others. Greater investment in our more established suburbs of Broadmeadows, Jacana, Coolaroo, Gladstone Park, Greenvale, Campbellfield, and Tullamarine will help rebalance this inequity.

Hume's Open Space Strategy sets priorities for the next 15 years to 2040. It will be supported by a 10 year implementation plan to guide budget bids and open space contributions for delivery.

To achieve the vision, the Open Space Strategy identifies the following priorities:

- Increase open space quality and quantity in established suburbs to fill **gap areas** that have the furthest to walk to open space.
- The renewal program for **parks** needs to be expanded to accelerate the replacement aged infrastructure and progressively support all abilities. Priority suburbs are Tullamarine, Gladstone Park, Broadmeadows, Roxburgh Park, and Sunbury.
- The urban forest **canopy cover** is only 4% across Hume and greater tree planting in open space will help reduce heat impacts.
- There is a need for more open spaces to support **events and smaller outdoor gatherings**. This applies across Hume with the greatest need in Sunbury.
- The need for **park maintenance** costs to account for climate change, emergency response, and higher supply costs. Litter and dumping prevention is a community priority and more education and enforcement can assist.
- The **Wurundjeri Woi-wurrung** people have been traditional custodians of this land for thousands of years. Returning land to their management benefits the environment and demonstrates respect for their culture and knowledge.
- The **Hume Planning Scheme** is critical in protecting parks from encroachment, setting aside land for new parks, and for ensuring developer contributions will help fund open space assets for the growing population

HUME CITY COUNCIL OPEN SPACE STRATEGY

PLAN ON A PAGE

DRAFT STRATEGIC FRAMEWORK

VISION

Hume's high-quality open space network supports the health and wellbeing of our diverse community and celebrates the waterways, natural values and Wurundjeri Woi-wurrung cultural values of our landscape

OUTCOMES

The network will be:

Diverse

Open spaces in Hume will provide diverse visitor experiences. They will reflect diverse communities and needs including Traditional Owner cultural values

Resilient

Open spaces in Hume will be cooler, greener and more resilient to climate change. They will provide habitat links and strengthen biodiversity resilience

Equitable

Open spaces in Hume will be equitable in their supply and quality to best enhance the health and wellbeing needs of different Hume communities

Accessible

Open spaces in Hume will be well-connected and accessible, designed for people of different abilities to enjoy a more expansive open space experience

Multi-functional

Open spaces in Hume will be multi-functional and designed to provide amenity, comfort, safety, and a mix of visitor experiences and environmental functions

KEY POLICY DIRECTIONS

This will be delivered by planning and investing to:

PROTECT

Protect conservation, heritage & Wurundjeri Woi-wurrung values
Protect continued access to parks by preparing for climate change
Protect open space from encroaching development, works & interfaces

OPTIMISE

Open spaces designed and maintained to provide a mix of visitor experiences in each neighbourhood

GROW

New open spaces in areas of highest visitor and/or ecological needs, especially along waterways

MEASURES

Indicators of successful progress will be:

Number of reserves with best fit park planning zones applied to protect open space values

Target: An increase in reserves with best fit park planning zone applied to be achieved every five years

Number of reserves with improved visitor use due to park renewal or upgrades

Target: A progressive increase in park renewal/upgrade projects to reach 16 parks annually before 2034

Percentage of urban homes within 400m walk of open space. While 94.5% of homes in Hume achieve this, in two precincts this falls to 69% and 79%.

Target: No precinct is to have less than 82% of homes within 400m of open space by 2034

PRIORITY ACTIONS

To achieve this:

Partner with Wurundjeri Woi-wurrung to better reflect cultural and ecological values in open spaces and waterways

Amend the planning scheme to better protect parks and enable developer contributions

Continue park maintenance program including climate adaptation, and new initiatives for litter & dumping prevention

Enhance the park renewal program to better support shade, play, gatherings, culture, connections and placemaking

Enhance the urban forest program to create cooler, shadier open spaces

Establish a strategic land investment program to help more homes be within 400m walk of open space.

CONTENTS

STRATEGIC FRAMEWORK

1 THE FUTURE OF OPEN SPACE

1.1	Vision.....	8
1.2	Outcomes.....	9
1.3	Key Policy Directions	
	• Protect.....	10
	• Optimise.....	11
	• Grow.....	12

2 CONTEXT AND APPROACH

2.1	Hume City Council Overview.....	14
2.2	Strategic Context.....	15
2.3	The Value of Open Space.....	17
2.4	Status of 2010 Open Space Strategy.....	18
2.5	Multiple Open Space Managers.....	19
2.6	Precincts and Waterways Approach...	20
2.7	Community Needs Approach.....	21
2.8	Definition of Open Space.....	22
2.9	Classification of Open Space.....	23

3 THE CURRENT STATE OF OPEN SPACE IN HUME

3.1	Traditional Owners.....	26
3.2	A Multicultural Community.....	28
3.3	Waterways in Hume.....	29
3.4	Regional Parklands.....	30
3.5	Urban Forest Canopy.....	31
3.6	Open Space Character in Hume.....	33
3.7	Reflecting Trends in Open Space Use.....	34
3.8	Key Challenges and Drivers for Hume.....	35
3.9	Open Space Needs Assessment	37
3.10	Community Engagement Findings.....	38

4 IMPLEMENTATION

4.1	Decision Making Frameworks	
	• Protect.....	41
	• Optimise.....	42
	• Grow.....	43
4.2	Open Space Levels of Service.....	44
4.3	Key Actions.....	45
4.4	Implementation Plan.....	46
4.5	Funding.....	47

5 PRECINCT PROFILES

5.1	Precinct 1 - Sunbury Rural
5.2	Precinct 2 - Lancefield Road
5.3	Precinct 3 - Sunbury Central
5.4	Precinct 4 - Redstone Hill
5.5	Precinct 5 - Rural
5.6	Precinct 6 - Greenvale
5.7	Precinct 7 - Valley
5.8	Precinct 8 - Broadmeadows
5.9	Precinct 9 - Roxburgh Park
5.10	Precinct 10 - Somerton
5.11	Precinct 11 - Craigieburn
5.12	Precinct 12 - Mickleham
5.13	Precinct 13 - Kalkallo

GLOSSARY	51
-----------------------	----

APPENDICES

A. Waterway Open Space.....	57
B. Infrastructure Levels of Service.....	58
C. Off-Leash Dog Areas & Prohibited Areas.....	62
D. List of Open Space Reserves & Function....	64



PURPOSE OF THE STRATEGY

The Open Space Strategy sets out strategic priorities in open space planning to help improve environmental, health and wellbeing outcomes across Hume City.

It supports delivery of the Hume Council Plan and multiple Council strategic commitments.

The Open Space Strategy responds to new challenges and drivers and seeks to:

- Provide an overview of existing visitor experiences and future community needs
- Guide equitable and high quality open space provision
- Respond to climate change, protect the natural environment and respond to Traditional Owner priorities for Country

Hume's Open Space Strategy sets priorities for the next 15 years to 2040. It will be supported by a 10 year implementation plan to guide budget bids and open space contributions for delivery.


This Open Space Strategy applies the Protect-Optimise-Grow framework set out in Victoria's Open Space for Everyone Strategy.



1. THE FUTURE OF OPEN SPACE



1.1 Vision

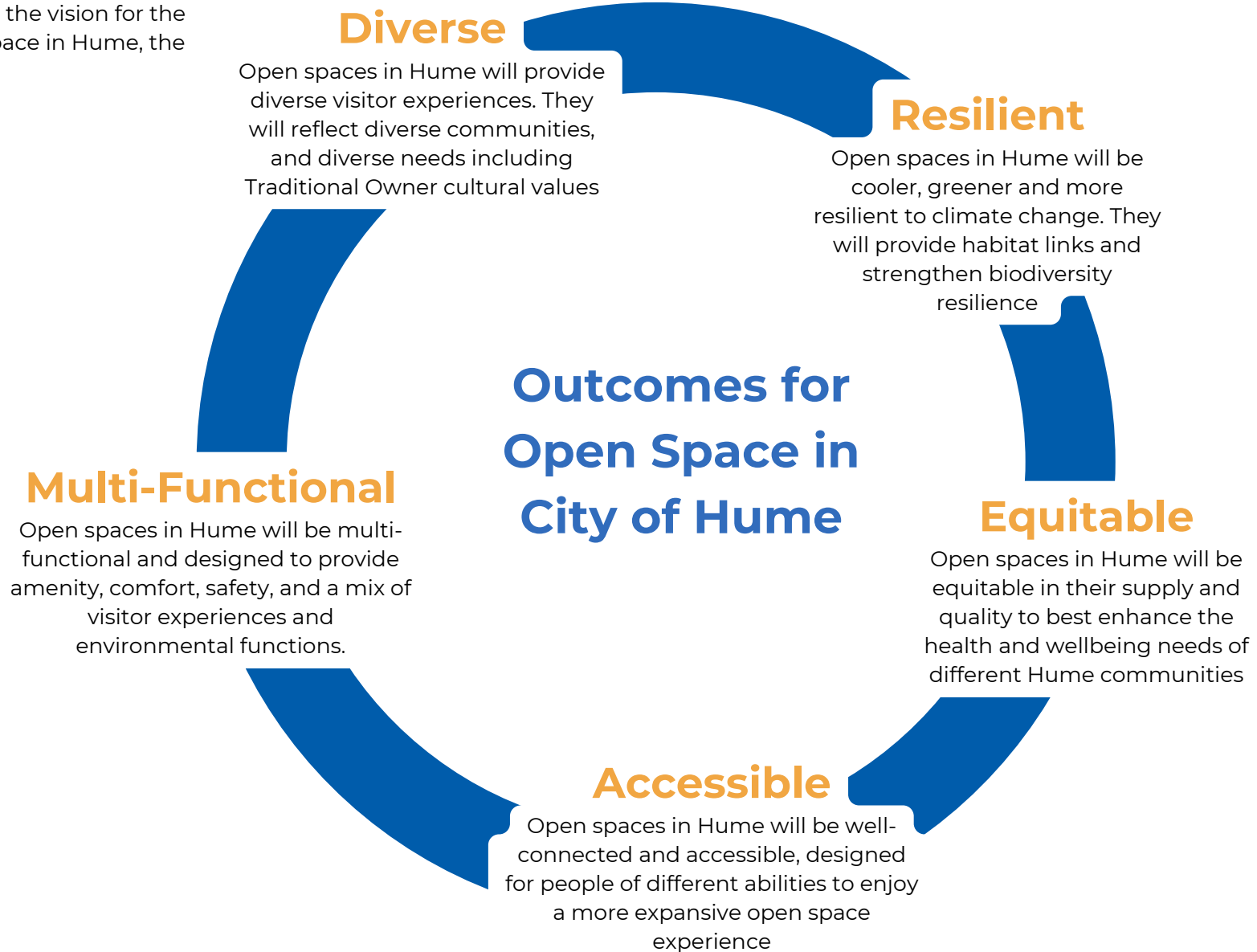


Hume's high-quality open space network supports the health and wellbeing of our diverse community and celebrates the waterways, natural values and Wurundjeri Woi-wurrung cultural values of our landscape

THE FUTURE OF OPEN SPACE

1.2 Outcomes

In implementing the vision for the future of open space in Hume, the network will be:



THE FUTURE OF OPEN SPACE

1.3 Key Policy Direction

Protect

Protect conservation, heritage & Wurundjeri Woi-wurrung values
Protect continued access to parks by preparing for climate change
Protect open space from encroaching development, works & interfaces

Measure

No of reserves with best fit park planning zones applied to protect open space values

Target: An increase in reserves with best fit park planning zone applied, achieved every five years

Why is it important?

Hume is home to highly significant cultural and ecological sites. Open spaces are a critical way to protect, monitor and link them. They are also a way to help visitors see and connect to our land, our people, our past.

The Wurundjeri Woi-wurrung people have been traditional custodians of this land for thousands of years. Returning land to their management benefits the environment and demonstrates respect for their culture and knowledge.

Climate change will bring extended droughts, water restrictions, floods and storms. Returning our parks swiftly to safety for visitors is important.

Parks are historically viewed as surplus space and it requires continual vigilance to protect them from encroaching development. A great open space network is critical to support communities living in increasing dense housing.

Reducing litter, dumping and weed encroachment is important for parks and to the community. Sustainable asset maintenance is critical for the ongoing care of these spaces into the future.

What will it achieve?

An improved sustainable funding model that responds to increasing climate change costs, protects biodiversity, enables education and enforcement, and supports a partnership with Wurundjeri Woi-wurrung for land management. Planning controls for ongoing park protection.

Implementation

Protect and/or enhance:

- **conservation values** within all open spaces. Apply principles of the Land and Biodiversity Plan and implement conservation management plans for all nature reserves
- **Wurundjeri Woi-wurrung cultural values**. Including all waterways, stony rises and areas of cultural significance such as Jacksons Creek biik wurrdha Parklands, and marram baba Merri Creek Parklands. Follow Wurundjeri Woi-wurrung advice and create partnerships to support cultural values & ceremony, cultural heritage, interpretive education, and land management
- **heritage features** including bridges, drystone walls, cemeteries, memorials, pastoral houses, cottage ruins, historic landforms, and evidence of original townships, agriculture and industry
- **existing trees** in open spaces. In the event any tree is to be removed, demonstrate all efforts applied to try and prevent its removal through alternative design and solutions
- all named and unnamed **waterways** in and adjacent to open space by prioritising ecological and cultural values and sensitively siting any visitor infrastructure such as trails, signage and viewing areas
- access to open space by adapting to **climate change**, including extended droughts, extreme storms, extreme heat, floods and fires. For example, sourcing recycled water and stormwater for additional reserves where feasible to increase their resilience to future water restrictions; managing land and assets to reduce fire risk and storm damage.
- provision of open space by ensuring **no net loss of open space** and no encroaching development. Open space is not to be considered as unused space or surplus space. Any land loss is to be offset elsewhere. Undertake:
 - Rezone park *planning scheme* controls to protect the recreation and/or conservation status of reserves
 - For all *unassigned Crown Land*, advocate to State Government to assign Committees of Management, Traditional Owners or other land managers to maximise ecological and community benefit
 - Advocate to prevent future *easements* being added to existing open space. In the event easements are added, ensure they are designed to maximise community access and benefit
 - *Community gardens* to be supported at the three existing sites (Craigieburn, Westmeadows, Sunbury) and additional areas only supported if ongoing community benefit and self-organisation is demonstrated
 - Any *works* within open space such as pavilion expansions must be designed to maximise the amount of open space available for other visitor experiences.
- **environmental** outcomes by minimising resources, waste, air and water pollution; and using renewable energy
- high maintenance standards by developing an improved **sustainable funding model** that responds to increasing climate change and emergency costs, protects biodiversity, enables education and enforcement, and supports partnership with Wurundjeri Woi-wurrung for land management.

This key policy direction will inform **open space implementation plans** for Traditional Owner partnerships, park maintenance, education and enforcement, masterplans, planning scheme amendments. *This direction must be read in conjunction with the precinct summaries.*

THE FUTURE OF OPEN SPACE

1.3 Key Policy Direction

Optimise

Open spaces designed and maintained to provide a mix of visitor experiences in each neighbourhood

Measure

Number of reserves with improved visitor use due to park renewal or upgrades

Target: A progressive increase in park renewals/upgrades to reach 16 parks annually by 2034

Why is it important?

Optimising open space by creating quality, safe experiences will support better mental and physical outcomes for the community. This is especially important as the need for more housing results in increasingly smaller backyards.

A range of diverse spaces is necessary to meet the needs of different community members of varying abilities and ages.

Parks are free to use and can provide a respite for people in distress or socially isolated.

Parks help reduce urban heat impacts through shady urban tree canopy and water bodies that help cool the surrounding air.

Parks provide a connection to nature and need to be multi-functional as they are important places for also supporting sport, dog walking, cultural festivals & large family events.

Well-designed parks near shops can help enliven trader activity and build community.

What will it achieve?

A mix of open space experiences in each precinct with an up-to-date renewal program that responds firstly to vulnerability, need and safety. A greater investment in tree canopy, and more places for community gatherings and dogs.

Implementation

Seek to optimise:

- **social recreation experiences** by maintaining landscapes and visitor infrastructure to a level that invites regular community use and accommodates population growth. Ensure:
 - regional and district parks provide a greater mix of visitor experiences
 - smaller play spaces are spread based on equity of access for residents, and factoring in areas with high numbers of children, higher disadvantage and higher levels of housing with small backyards
 - existing play spaces are always maintained for safety, and renewed on a 15-20 year cycle. In some instances, a small local play space may be retired if a nearby space is upgraded
 - designs and choice will seek to reflect community multicultural priorities and uses
- **multi-functionality** to provide multiple visitor experiences. Examples include expanding the features of Bulla Parklands, Shanklands Tarcoola Reserve, and John Coutts Reserve. Investigate and if feasible, convert John Laffan Reserve and Hanson Reserve from active sporting to a mix of passive social recreation uses.
- **nature-based experiences** by enhancing and showcasing Hume's iconic waterway, hilltop and scenic trails and views. Maintain and enhance shared use trails to maximise ease of access.
- **sporting experiences** by maintaining sporting reserves and facilities to a level that invites regular community use. Some reserves will be upgraded to support more women in sport, and to service a higher number of users due to population growth. Apply principles of the Outdoor Sports Plan.
- **outdoor community events** by designing and providing supporting infrastructure for at least one reserve in every precinct to support small local events. Progress opportunities and investment to better support larger outdoor cultural events in Sunbury, Broadmeadows area and Craigieburn area.
- **increased trader activity** by designing any adjacent open space as an added attraction encouraging people to visit local shops. For example, improved amenity and table seating. This needs to be achieved while protecting public access to open space.
- **urban cooling** by increasing tree canopy in open space reserves. This includes dedicated 'oasis areas' planted to achieve 70% canopy cover by 2050, 'tree reserves' planted to achieve 50% canopy cover and all other reserves to achieve at least 20% cover by 2050. Exceptions apply where ecological priorities, sporting requirements or utility services limitations exist.
- **dog wellbeing** by supporting on-leash walking and providing new unfenced off-leash areas in all precincts except Valley and Broadmeadows (which are already well catered for). See Appendix C.
- **communication** to promote park use by improving signage and website information, supporting community interest groups, seeking input from different cultural groups, and seeking local input in any design and upgrades.
- improved **sustainable funding** through strategic capital works planning; use of grants, partnerships and open space contributions for upgrades; limiting non-core assets to principal parks, ensuring developers do not install high maintenance assets.

This key policy direction will inform **open space implementation plans** for playspaces, dog off-leash areas, public toilets, walking and cycling, outdoor events, urban forest, outdoor recreation, masterplans, local area plans. *This direction must be read in conjunction with the precinct summaries and levels of service.*

SUMMARY

Grow

New open spaces in areas of highest visitor and/or ecological needs, especially along waterways

Measure

Percentage of urban homes within 400m walk of open space. While 95.1% of homes in Hume achieve this, in two precincts this falls to 69% and 79%

Target: No precinct is to have less than 82% of homes within 400m of open space by 2034

Why is it important?

With more housing needed - often with small or no backyards - now is the time to be clear about land needed to protect the environment and create open spaces for people to enjoy.

Acquiring land will help close existing open space gaps where people have further to walk to reach their local park. Some parks will need expanding to help with safety and to meet forecast needs for sport, play, picnics, nature connections, urban cooling, outdoor event, and dog needs. In some instances, developer contributions can help fund these needs.

Investment in land can help link open spaces to improve their accessibility, particularly along waterways which can link many suburbs together.

Sharing land with schools, organisations and business can help create more open space.

Some land with threatened species and cultural heritage will be better protected if in public ownership.

Investing in land early through strategic analysis, is more cost-effective than buying it later.

What will it achieve?

One of greater Melbourne's premier suite of waterway parklands for all to enjoy. Protection of more areas of ecological and cultural value. Greater opportunities for outdoor cultural events, and links to support placemaking and local trading. Greater equity, safety and access to local parks for people experiencing disadvantage.

Implementation

- Commence a **'gap areas' land investment program** that investigates and prioritises new open spaces in areas with the largest number of homes beyond 400m walk to their nearest reserve. Across Hume, in order of priority, the gap areas to be investigated are:
 - Broadmeadows - south of Camp Rd; north of Camp Road;
 - Campbellfield - west of Sydney Road; east of Sydney Road
- Commence a **'safety and connections' land investment program** that investigates and prioritises land in areas of higher disadvantage that need improved accessibility, walkability, viewlines and placemaking. Across Hume it is a priority to investigate SF Hedger Reserve and surrounds in Tullamarine
- Continue a **'biodiversity and cultural' land investment program** that:
 - advocates to State Government for purchase of MSA Nature Conservation & Growling Grass Frog Areas
 - negotiates with developers for the gifting of ecologically sensitive areas
 - partners with Wurundjeri Woi-wurrung for land management and advocates for their ongoing funding
 - investigates protection of critical ecological sites. This includes critical grey box woodland sites along Attwood Creek, and Oaklands Junction.
- Fill missing links in **waterways program** by investigating, advocating and where feasible acquiring gaps along marram baba Merri Creek Parklands, Jacksons Creek biik wurrdha Parklands, and Merlynston Creek. Partner with State Government to investigate and if feasible apply public acquisition overlay on Maribyrnong River and part of Jacksons Creek (between Organ Pipes National Park and biik wurrdha Parklands).
- Investigate the feasibility of providing a new **civic urban plaza** and/or large **outdoor event space** in Sunbury. If necessary, investigate acquiring land for a large outdoor event space in the east of the municipality.
- **Sustainable funding solutions** will be applied including open space contributions, grants, buy-subdivide-sell, land sharing, negotiation and partnerships. Not all properties will be acquired, but all will be investigated.
- This key policy direction will inform **open space implementation plans** for land investment, open space developer contributions, structure plans, masterplans. *This policy direction must be read with the precinct summaries to see full list of opportunities.*

2. CONTEXT AND APPROACH



CONTEXT AND APPROACH

2.1 Hume City Council Overview

The City of Hume covers 504 square kilometres of urban and rural land on the rapidly growing outer northern suburbs of Melbourne.

It is located on traditional lands of the Wurundjeri Woi-wurrung people.

Hume is endowed with 3,886ha of open space covering 7% of the municipality. Over 3,002ha are accessible to the public and the remainder protected for ecological reasons.

Hume City is one of the fastest growing and most culturally diverse communities in Australia. It is expected to grow by more than 130,000 people in the next 20 years.

Planning for open space needs to go hand-in-hand with planning for new housing, transport and infrastructure to support the growing population. It also means valuable ecological, cultural and community assets are protected during this time of change.



Location of City of Hume (not to scale)

Source: Council Plan 2021-2025

CONTEXT AND APPROACH

2.2 Strategic Context

Metropolitan Melbourne Open Space for Everyone 2021

The State Government’s metropolitan open space priorities are set out in *Open Space for Everyone 2021*. This aligns to Plan Melbourne and is reflected in Clause 19.2-6R of the Hume Planning Scheme.

Open Space for Everyone guides all levels of government in the planning, management and delivery of a quality open space network over the next 30 years. It will achieve this by fostering a coordinated approach by state and local governments, Traditional Owners, communities, researchers, and businesses.

Hume's Open Space Strategy adopts the three key policy directions - Protect, Optimise and Grow - to guide planning of and investment in open space.

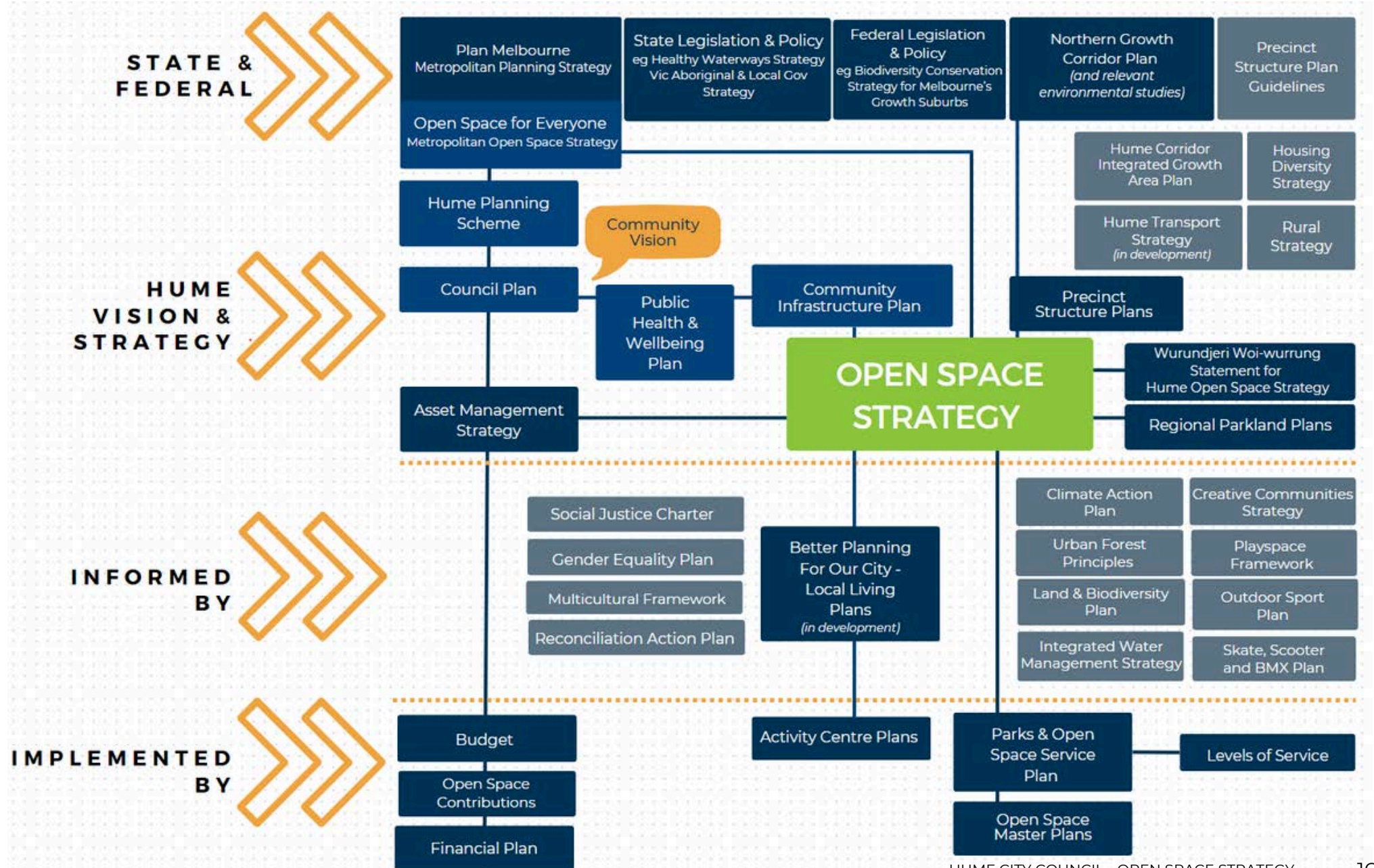
Open Space for Everyone, Strategic Framework
Source: *Open Space for Everyone Strategy*



CONTEXT AND APPROACH

Local Context

The Hume Open Space Strategy sits within a number of municipal strategies and plans which inform or are informed by the strategy.



THE CURRENT STATE OF OPEN SPACE

2.3 The Value of Open Space

Open space is an essential part of our urban environment, with numerous benefits for our communities and our natural environment. Planning for open space within existing suburban areas as well as new developments and areas of environmental significance, must acknowledge the importance of these places and networks for the future health of our people and our planet.

Physical Activity

Open spaces provide the opportunity for people to engage in a range of physical activities. They improve walkability and increase people presence within neighbourhoods. Walking trails are provided in most open spaces, and sporting, cycling, play and exercise equipment is also provided in different open spaces. This helps address individual and public health problems relating to a lack of physical activity.

Mental Wellbeing

A regular connection to the natural environment has been shown to help improve mental wellbeing, reduce levels of stress and anxiety, increase brain activity, and promote a positive mindset. Open spaces provide opportunities to unwind, relax, move, and connect with nature and community, all which support good mental health. This is increasingly important as back yards become smaller.

This extends to people in distress. The respite provided by nearby open spaces can help in situations of domestic abuse, homelessness and extreme social isolation.

Social and Community Connectedness

Community connection is supported by open space by providing free places to interact, socialise, relax, celebrate, unite, entertain and play. Spaces for outdoor community events and gatherings encourage an interactive community.

Sense of Place

Open spaces reflect and hold the landscape, history, character and values of neighbourhoods. This is vital to fostering a distinctive neighbourhood character and a unique sense of place that contributes to well-being.

Economic Value

Open space creates improved access and amenity to neighborhoods. When integrated well with nearby businesses, open space can help support their vitality. There is also economic value through tourism, property value and environmental conservation.

Biodiversity

Open spaces provide habitat for a range of flora and fauna, assist in creating habitat corridors, and can include critical areas of remnant indigenous vegetation. They provide opportunities to increase biodiversity through a range of plant species and landscape characters.

Cultural Heritage

Open space can reflect and protect Indigenous and non-Indigenous cultural values in both a contemporary and historical context. It's important that we protect places (like waterways and viewpoints) and features (such as trees and outcrops) for the future. Public art, material and species selection in open space support other initiatives like activation, programming and signage to tell the story of places.

Changing Climate

Open space helps reduce urban heat impacts in urban environments by creating space for green landscapes, shady tree canopy, water bodies and water features. Cooler urban spaces can help people experiencing heat stress. Open space also allows more rain to be absorbed into soil which helps reduce some flooding and waterway impacts.

CONTEXT AND APPROACH

2.4 Status of 2010-2015 Open Space Strategy

Open Space Achievements since 2010

- The endorsement of the Jacksons Creek biik wurrdha Regional Parklands Plan for 1,000ha parkland to be co-managed with Traditional Owners and State Government
- The endorsement of the marram baba Merri Creek Regional Parklands Plan for a 2,700ha parkland to be co-managed with Traditional Owners, State Government, Whittlesea and Mitchell.
- Continual extension of shared paths to improve linear connections
- Continual upgrade of playspaces to support all abilities
- Irrigation of over 60 priority reserves including 19 with recycled water
- Ongoing progress on remediating former landfills for open space - Bolinda Road, Johnstone Street, Northcorp Boulevard
- Three community gardens established

In Growth Areas

The Precinct Structure Planning (PSP) process for growth areas in Craigieburn, Kalkallo, Mickleham, Sunbury, and Greenvale has achieved:

- Over 300ha of open space land secured
- Significant tracts of remnant vegetation protected as nature reserves
- Over six waterway reaches secured along Malcolm Creek, Aitken Creek, Yuroke Creek, Jacksons Creek, Harpers Creek and Emu Creek
- Over 24 district sporting reserves secured and 12 already designed and delivered
- Two hilltop reserves - Mt Ridley, Mt Aitken
- Over 100 local parks designed and delivered

In Established Areas

- New open space land created or made accessible to the public along Kismet Creek and Meadowlink
- Upgrades to over 90 local parks
- Upgrades to 10 neighbourhood parks
- Upgrades to 10 district parks

Ongoing

The following actions from the 2010-2015 Open Space Strategy are still to be delivered:

- Updating developer contributions for open space via planning provisions
- Updating planning scheme controls to protect open space values
- Filling open space gap areas in established areas including Broadmeadows and Campbellfield
- Reviewing the distribution of local open spaces to determine whether any sites can be rationalised (where upgraded facilities can be provided nearby)
- Investigating links along Maribyrnong River, Deep Creek in Bulla, and Upfield Railway Corridor
- Conservation Management Plans in place for all nature reserves

All of these actions retain their importance and are included in the Open Space Strategy 2024

CONTEXT AND APPROACH

2.5 Multiple Open Space Managers

Hume City Council manages over 1,954ha across 562 open space reserves, in addition to a further 440 walkways.

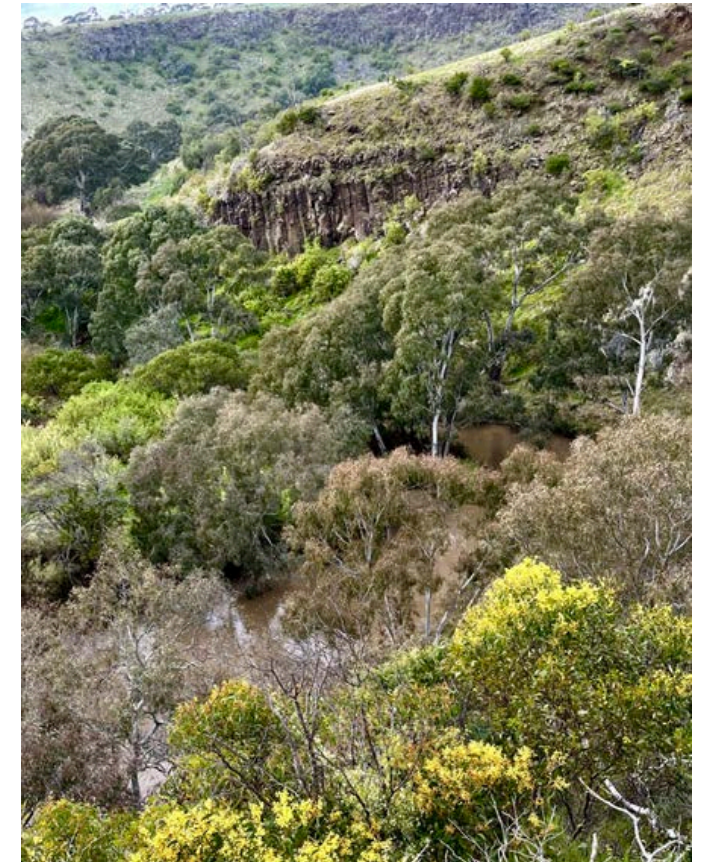
An additional 1,991ha across 26 open space reserves is managed by Parks Victoria, Melbourne Water, State Government, Federal Government, Wurundjeri Woi-wurrung Cultural Heritage Aboriginal Corporation, and Committees of Management.

Council's Role as custodian of its open spaces in Hume includes:

Service Provider	Council designs, enhances and maintains local parks and open spaces, allowing them to be freely accessible to visitors and strengthening urban and residential communities.
Environmental Stewardship	Protects and enhances biodiversity and Traditional Owner values within the municipality. Factor in risks to both short- and long-term ecosystem health and landscape values into planning and decision making. Support the community to manage land sustainably.
Facilitator	Council facilitates, partners and plans open space with a range of other organisations including but not limited to Parks Victoria, Department of Energy, Environment and Climate Action, Melbourne Water, VicTrack, VicRoads, Committees of Management and Traditional Owners to complement our Hume's open space network.
Advocator	Council plays an important role in advocating on behalf of the community to other levels of government and service providers in order to ensure parks and open space needs and priorities are addressed in state planning documents and funding arrangements.

Open space managers work together to support ecological, cultural and visitor outcomes.

This Strategy values all open spaces in its planning, however its implementation directions are only for Hume City Council.



Harpers Creek in Holden Flora Reserve (Parks Vic)

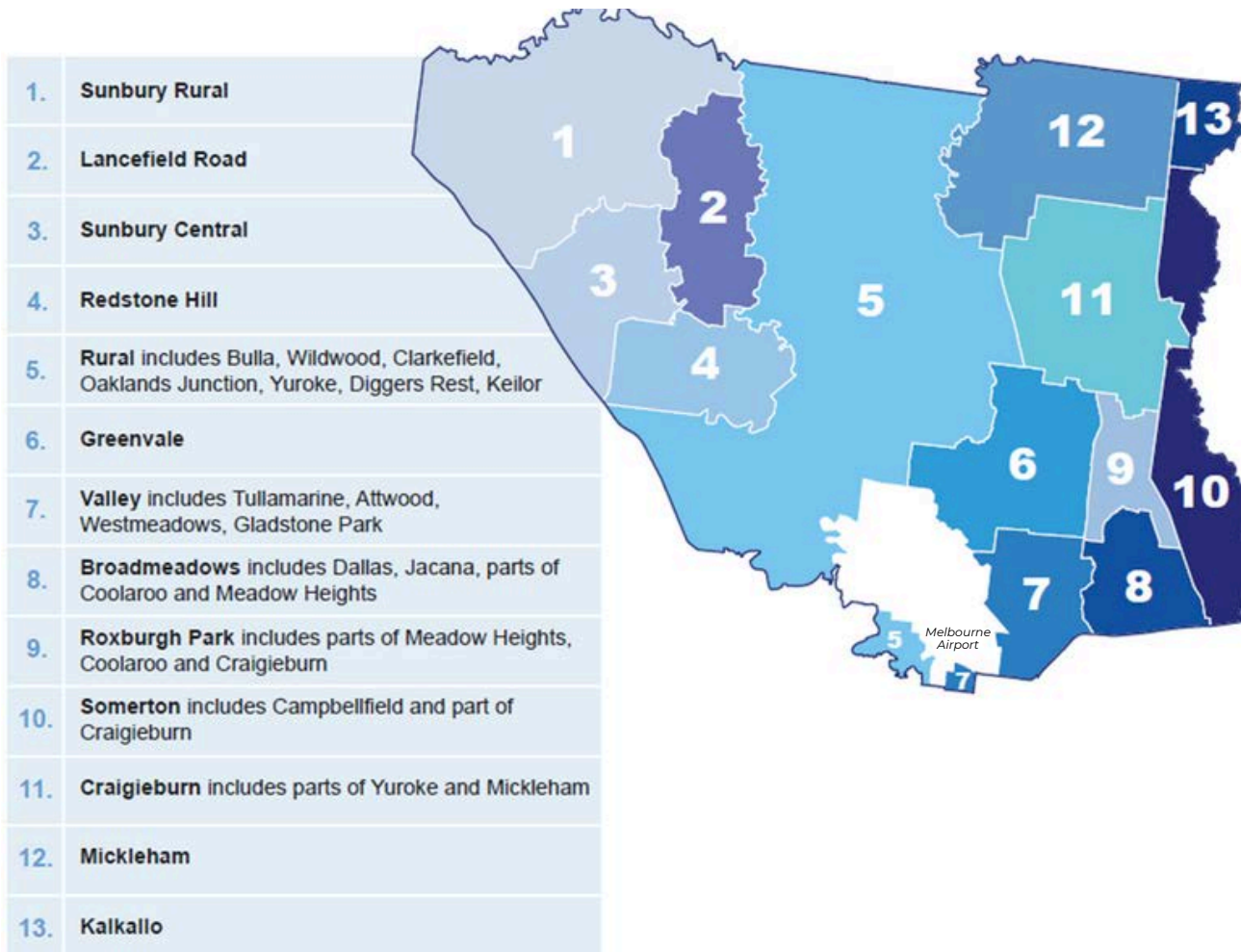
CONTEXT AND APPROACH

2.6 Precincts and Waterways Approach

Precincts

Due to the diverse nature of communities and urban form across the City of Hume, a precinct planning approach has been adopted to respond to their different needs and characteristics.

The 13 precincts align with Hume's Community Infrastructure Planning Framework.



Waterways

The precinct analysis is then overlaid with the waterways that provide habitat, cultural and community connections across the municipality.

There are 26 named waterways in the City of Hume all with varying amounts of public open space along their banks.



Hume Waterways Map

Source: Adapted from Areas of Cultural Heritage Sensitivity Layer Aboriginal Heritage Act 2006

*Melbourne Airport has been excluded from the analysis

CONTEXT AND APPROACH

2.7 Community Needs Approach

Open spaces can be a haven from the stresses of daily life, allowing people to step outside, reflect, connect with nature, socialise or engage in physical activities. This no-cost respite is appreciated by many.

At a broad level, different communities have different needs as shown by the indicators from the Community Infrastructure Plan (right).

Red traffic lights highlight the precincts with higher levels of community needs for which open spaces assume an even more crucial role.

The community needs profile is an important consideration in open space planning with the priority precincts identified as Broadmeadows, Valley, and Roxburgh Park; followed by Sunbury Central and Craigieburn.

	Vulnerable & Disadvantaged	Health & Wellbeing	Accessibility & Inclusion
Precinct 1 Sunbury Rural	Green	Green	Green
Precinct 2 Lancefield Road	Orange	Orange	Orange
Precinct 3 Sunbury Central	Orange	Red	Red
Precinct 4 Redstone	Green	Green	Green
Precinct 5 Rural	Green	Green	Orange
Precinct 6 Greenvale	Green	Green	Orange
Precinct 7 Valley	Red	Red	Red
Precinct 8 Broadmeadows	Red	Red	Red
Precinct 9 Roxburgh Park	Red	Red	Red
Precinct 10 Somerton	Green	Orange	Orange
Precinct 11 Craigieburn	Orange	Red	Orange
Precinct 12 Mickleham	Orange	Orange	Orange
Precinct 13 Kalkallo	Orange	Green	Orange

Criteria

Vulnerable and Disadvantaged
Refers to different levels of social disadvantage and vulnerability such as financial hardship, disengagement with employment and education, and access to affordable housing.

Health and Wellbeing
Refers to different levels of physical and/or mental health.

Accessibility and Inclusion
Refers to the ability to get to services and infrastructure (via transport, walking and cycling), combined with the ability to physically access an asset (including people with reduced mobility).

The community needs assessment data is drawn from Hume Community Infrastructure Plan 2023.

- Highest needs - Priority
- Medium needs
- Lower needs

CONTEXT AND APPROACH

2.8 Definition of Open Space

'Public open space' in this strategy adopts Victoria's 'Open Space for Everyone' definition:

Public land and waters that provide for one or more of these purposes:

- outdoor recreation
- leisure
- environmental and cultural benefits
- visual amenity
- off-road active transport.

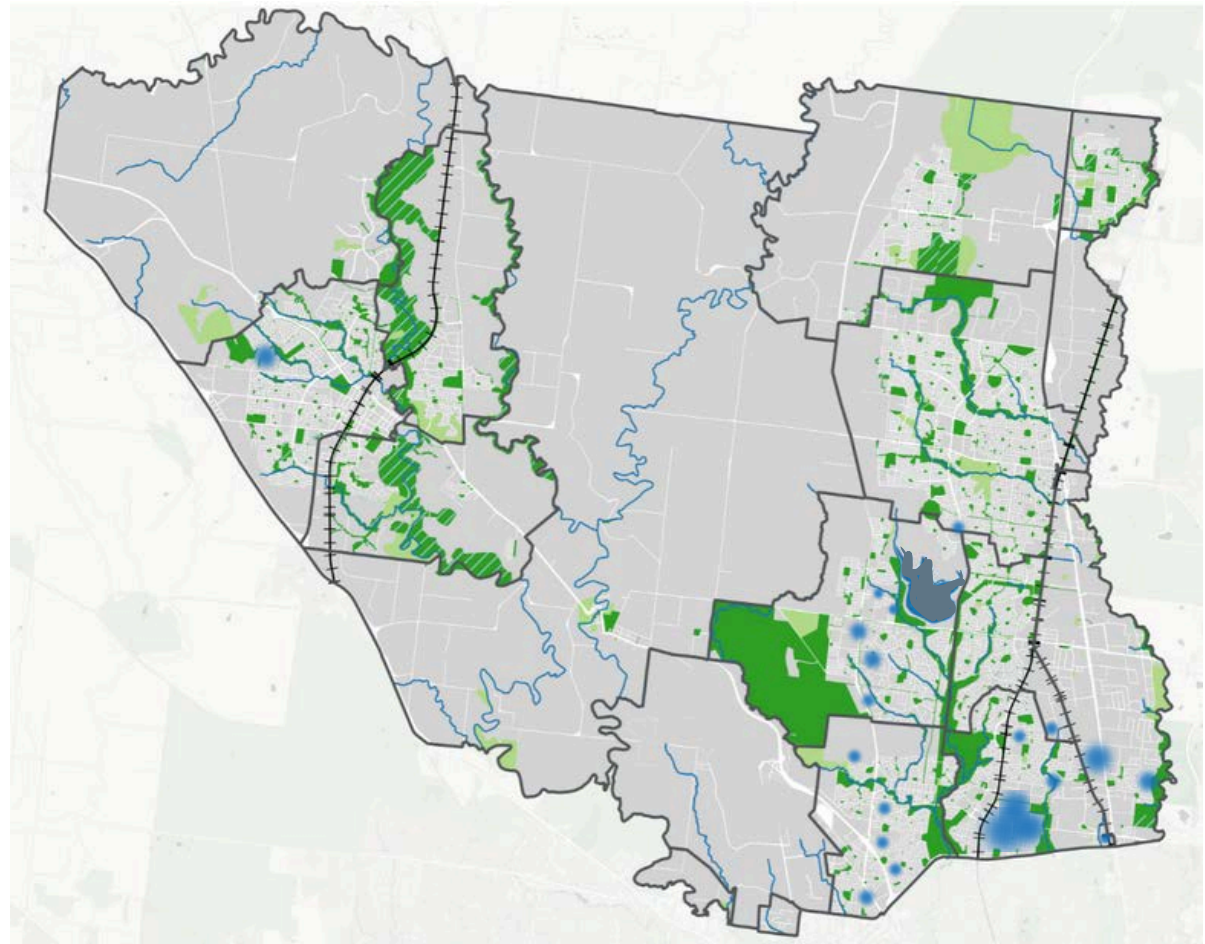
For the purpose of this strategy, 'public open space' has been abbreviated to 'open space'.

Open space is land that is freely open for public enjoyment. The exceptions to this:

- some areas within a reserve may have areas of restricted access for visitor safety or to protect assets
- some minimal fees may be charged for events or small features within reserves
- some reserves may be wholly restricted from public access to protect ecological or cultural assets for public benefit.

Open space that serves a utility purpose such as electricity, gas and drainage easements, road or rail reservations, or are primarily for conservation or cultural asset protection are known as 'encumbered open space'.

Encumbered spaces are counted as open space unless they are entirely inaccessible and lack any vegetation.



- Open Space Reserves. 3002ha
- Proposed Open Space Reserves.
- Open Space Reserves not accessible to the public due to safety risks, asset protection. 884ha.
- Precinct Boundaries
- Gap areas where people have further than 400m to walk to open space from their home

Hume Open Space Network

Please see glossary for further definitions

CONTEXT AND APPROACH

2.9 Classification of Open Space

To review, plan and maintain the open space network it is helpful to use a classification system defining hierarchy, function and character.

Hierarchy of Open Spaces

The strategy uses the four tier 'hierarchy' system to describe open spaces.

The hierarchy is based on expected length of stay; distance travelled; and the "quality" of experience which is related the number and type of amenities, equipment and services provided. Size also influences the categorisation of a park but there are exceptions.

Regional	Substantial facilities for organised sport, play, social interaction, relaxation and enjoyment of nature. Size is variable and dependent on function and is bespoke in design. Typically attract visitors from 15km away, or more who expect to stay for more than 2 hours.
District	Open space and recreation facilities that draw people from across a precinct. This could be due to size, uniqueness, quality of features or equipment. Generally over 5ha in size and people typically expect to travel up to 15 minutes to visit and expect to stay more than an hour.
Neighbourhood	Open spaces that serve as the recreational and social focus of the neighbourhood. Provides a unique sense of place and includes informal, active and reflective options for all ages. Typically people expect to travel approximately 800m, or a 10-15 minute walk to visit, and expect to stay more than half an hour.
Local	Open spaces that address immediate walkable catchment providing passive recreation and supporting a green network. It can also have a dedicated nature or cultural purpose. Generally less than 1ha in size and people typically walk from home to visit, approximately a 5 minute walk, and expect to stay for a short time.



Above: Craigieburn Gardens

Below: Golden Sun Moth Park



CONTEXT AND APPROACH

Function of Open Spaces

All open spaces have been assigned a primary and secondary function to identify the priority purpose of the open space and therefore how it is designed and managed.

The function does not define the value or the only uses of the space, and it is expected that all open spaces are multifunctional.

The functions are defined below:



Mt Ridley Hilltop Reserve, Craigieburn

Social Recreation	Informal recreation, gatherings, play and enjoyment of green space, place and nature
Sport	Formal organised sport
Environmental Conservation	Protecting and/or enhancing biodiversity, habitat, cultural or heritage values. <i>Public access may be limited.</i>
Tree Reserve	Nature enjoyment, and urban forest protection, enhancement and cooling
Urban and Civic	Gathering place in a busy activity area. Can host organised events, markets, and festivals.
Linear Links and Trails	Enjoyable walking and cycling links that can also support scenic opportunities
Drainage	Waterway and drainage protection. <i>Public access may be limited.</i>
Ancillary	Infrastructure protection, for example powerline easements. <i>Public access may be limited.</i>

All open spaces have an *urban greening* function except if there are utility limitations.

The function of an open space can change if agreed in a masterplan, concept plan or strategic planning process.

It can also change in response to environmental or climate change impacts on an open space.

3. THE CURRENT STATE OF OPEN SPACE IN HUME



THE CURRENT STATE OF OPEN SPACE

3.1 Traditional Owners

'The lands, water, sky, plants, animals and more that make up the land now known as the City of Hume are part of the traditional Country of the Wurundjeri Woi-wurrung people, a custodianship that endures today.'

The Wurundjeri Woi-wurrung people are represented by the Wurundjeri Woi-wurrung Cultural Heritage Aboriginal Corporation (WWCHAC) (1).

WWCHAC provided strategic principles to inform Hume's Open Space Strategy and other related land, biodiversity and waterway strategies.

The principles of the Wurundjeri Woi-wurrung are supported throughout the Hume Open Space Strategy by:

- reflecting the importance of cultural values and cultural heritage protection
- emphasising the protection of waterways, earth rings, stony knolls and cultural landscapes
- opportunities to practice ceremony, interpretive education, and the return of managing Country.

This aligns to Hume's commitments in its Social Justice Charter, Reconciliation Action Plan, and the Victorian Aboriginal Affairs Framework.

Direct quotes from the *Wurundjeri Woi-wurrung Statement for Draft Hume Open Space Strategy 23 August 2023* are provided on these two pages are in italics.

Country

'The City of Hume is on Country consisting of basalt plains and remnant grasslands, grassy eucalypt woodlands volcanic cones, stony rises, gorges alongside developed industrial and residential areas that transition into agricultural land within the green wedge area.'

'Protecting and recognising the waterways within the City of Hume as living entities is an important Wurundjeri Woi-wurrung value to be reflected in Hume's open space, and decisions that impact waterways must have a demonstrated environmental net benefit and a quadruple bottom line assessment'



(1) <https://www.aboriginalheritagecouncil.vic.gov.au/victoria-registered-aboriginal-parties>

THE CURRENT STATE OF OPEN SPACE

'There is a deep cultural obligation and birthright to look after Country and keep it healthy.'

'Today our Country is shared with Victorians from many different backgrounds'

'We believe that Wurundjeri Woi-wurrung people must take a leading role in working with all communities on matters of Country.'

Culture

'Respectfully sharing Wurundjeri Woi-wurrung culture and educating the broader population about the importance of recognising, supporting and enhancing the rights of, and opportunities for, Wurundjeri Woi-wurrung people.'

'In modern society the presentation of Wurundjeri Woi-wurrung culture can occur in different ways. This includes cultural spaces and centres, Welcomes to Country and Smoking ceremonies, culturally appropriate signage, publicly displayed artwork, location markers, online engagement, appropriate use of language, the display of Wurundjeri Woi-wurrung historical artefacts, as approved by the Corporation, and in many other forms'

Care for Country

'We seek to build solid, working relationships and partnerships across our Traditional Country to protect, manage and restore the land and water today and for future generations'

'Wurundjeri Woi-wurrung cultural values are to be embedded in open space planning including parklands establishment, protection and management.'

'The Open Space Strategy is to provide strategic support for the Narrap Unit (within WWCHAC) to be funded to undertake land management wherever possible.'

'The Wurundjeri Woi-wurrung consider all Country is significant. Within this context, some places are named for immediate protection and planning controls'



THE CURRENT STATE OF OPEN SPACE

3.2 A Multicultural Community

Hume proudly services one of the most culturally diverse communities in Victoria with residents from over 156 countries. The top overseas countries of birth include Iraq, Turkey, Lebanon and India.

Council values the diversity of its community and is guided by its Multicultural Framework.

Open spaces offer an opportunity to celebrate different cultures, through their design, art, infrastructure and events.

Spaces can support the different needs of cultures, so they are welcoming for all. For example, communities have different sporting preferences, halal communities like to bring their own barbecues, some communities prefer seating options to allow for gender separation, large family groups like banquet tables, elderly residents like to sit in the shade with a friend.

No matter what country of origin, our residents from all countries told us that 'getting out in nature' is their primary motive for visiting parks. Taking children to the playground, and exercising outdoors were also popular with some cultures valuing it more than others. These differences will be supported in future open space planning.

Hume has a shortage of outdoor event spaces to host large community festivals, and smaller events and outdoor community gathering within parks. Filling these gaps will be one way to support our different community groups.

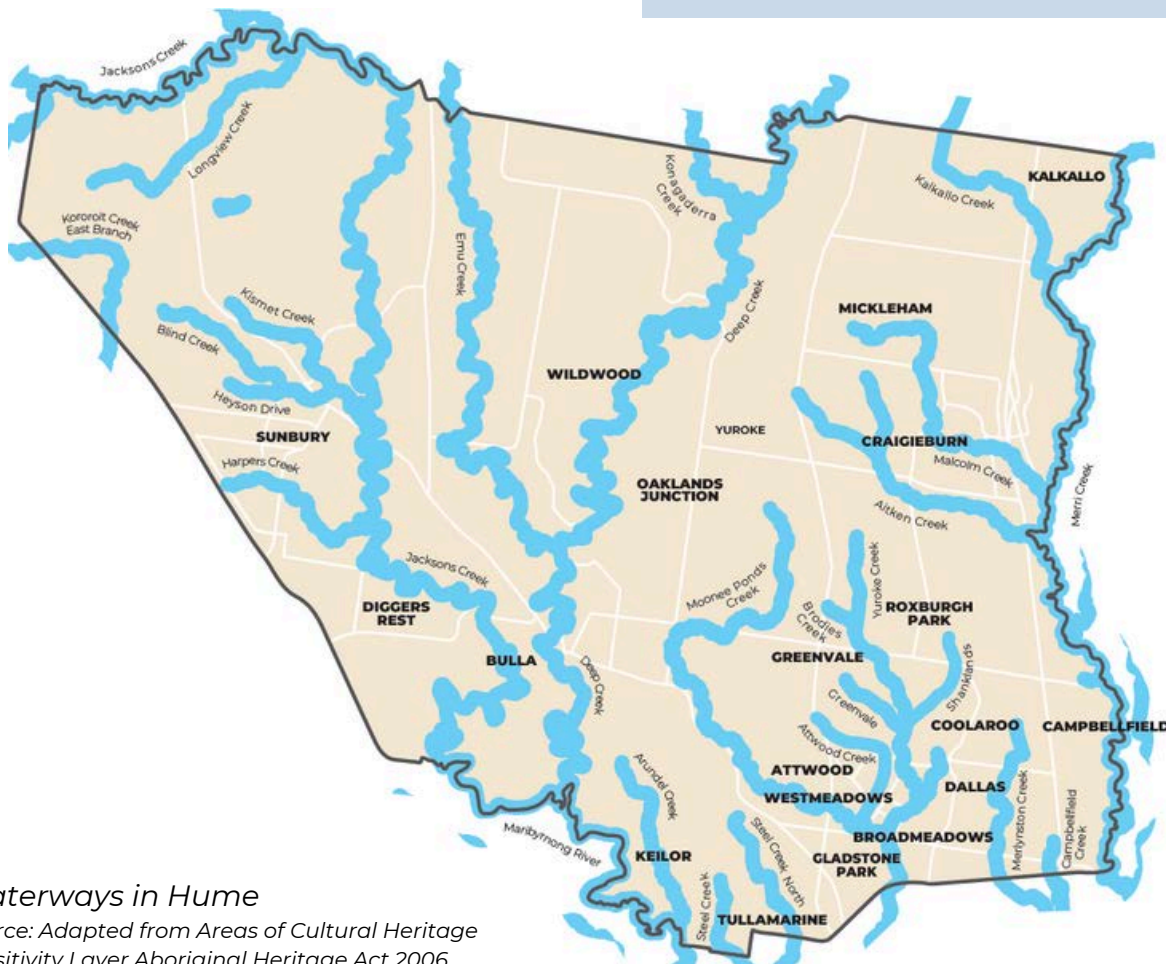
References - Hume Community Infrastructure Plan 2023, Parks Close to Home Consultation Report 2022.

THE CURRENT STATE OF OPEN SPACE

3.3 Waterways in Hume

The cultural, ecological, health and wellbeing benefits of open spaces along waterways are highly valued and celebrated at Hume.

Protecting waterways is a priority for the Wurundjeri Woi-wurrung people and are defined as 'Areas of cultural heritage sensitivity' in the Aboriginal Heritage Regulations 2018.



Merri Creek
Including the new marram baba parklands. Enjoyed at galada tamboore, Northpark Nature Reserve etc. Tributaries:

- **Kalkallo Creek** (eg John Laffan Reserve)
- **Aitken Creek** (eg Craigieburn Gardens, Burt Kur Min Reserve, Highlands Lake)
- **Malcolm Creek** (eg Centennial Park Dve Reserve)
- **Merlynston Creek** (eg Jack Roper Reserve) and its tributary **Campbellfield Creek**

Jacksons Creek
The central 'biik wurrdha' parklands reach will increase public ownership. Enjoyed at The Nook, Emu Bottom Wetlands, Jacksons Hill Reserve. Tributaries:

- **Blind Creek** (eg Sunbury Recreation Reserve) and its tributary **Heyson Drive Drain (Creek)**
- **Kismet Creek** (eg Spavin Lake) and its tributary Billy Goats Creek
- **Harpers Creek** (eg Wanginu Park)
- **Longview Creek**

Moonee Ponds Creek
From its source in Oaklands Junction, all but headlands are in public parkland. Enjoyed at Woodlands Historic Park, Jacana Valley Parklands, Westmeadows Reserve etc. Tributaries:

- **Yuroke Creek** (Broadmeadows Valley Park). Its tributaries include:
 - **Brodies Creek**
 - **Greenvale Drain (Creek)**
 - **Otways Crescent Drain (Creek)**
 - **Shanklands Drain (Creek)**
- **Steele Creek** and **Steele Creek North**
- **Attwood Creek**

Maribyrnong River
A State significant waterway with its source in Bulla at the confluence of Jacksons and Deep Creek. Its tributary **Arundel Creek**.

Deep Creek
Almost all in private ownership except Trap Street Reserve, Bulla Parklands, Bulla Crown Lands, Bulla Bulla Streamside Reserve, Konagaderra Bridge Reserve, Martin Dillon Reserve. Tributaries:

- **Konagaderra Creek**
- **Emu Creek**
- **Kororoit Creek East Branch**

Waterways in Hume
Source: Adapted from Areas of Cultural Heritage Sensitivity Layer Aboriginal Heritage Act 2006

See Appendix A for public ownership summary

THE CURRENT STATE OF OPEN SPACE

3.4 Regional Parklands

A wide range of visitor experiences can be enjoyed in Hume City's wide array of existing and emerging regional parklands.

Woodlands Historic Park

Enjoy grassy eucalypt forest, historic homestead and Moonee Ponds Creek. 838ha
Managed by Parks Victoria

Mt Ridley Nature Conservation Reserve

Enjoy grassy eucalypt forest and connecting green links to Malcolm Creek headwaters. 132ha
Managed by Parks Victoria & Hume City

Organ Pipes National Park

Stunning geological and cultural landscape. Located within Hume (54ha) and Brimbank City
Managed by Parks Victoria

Greenvale Reservoir Reserve

Enjoy stunning views of the reservoir. 60ha
Co-Managed by Parks Victoria & Melb Water

Broadmeadows Valley Park

Enjoy the expansive valleys, Yuroke Creek and interspersed playspaces. 162ha
Managed by Hume City Council.

Mt Holden Nature Reserve

Enjoy scenic hilltop views and walks 42ha
Managed by Hume City & Wurundjeri Woi-wurrung

Moonee Ponds Creek Parklands

Enjoy the length of Moonee Ponds Creek linking to Jacana Valley Park & Willowbrook Reserve 68ha
Co-Managed by Hume City, Melb Water, Airport

Blind Creek Parklands

Enjoy the length of Blind Creek in Sunbury and loop back by Heyson Drive or Kismet Creek. 45ha
Managed by Hume City Council

Aitken Creek Parklands

Enjoy the length of Aitken Creek in Craigieburn linking to Highlands Lake and Burt-Kur-Min. 65ha
Managed by Hume City Council

Malcolm Creek Parklands

Enjoy the length of Malcolm Creek in Craigieburn linking to Golden Sun Moth Park. 101ha
Managed by Hume City Council

Merlynston Creek Parklands

Explore most of Merlynston Creek linking to Jack Roper and Seabrook Reserves. 13ha
Co-Managed by Hume City & Melbourne Water

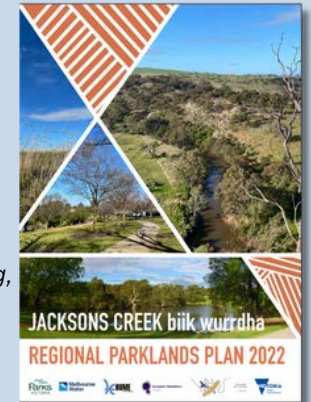
Greenvale Recreation Reserve

Regional sporting and equestrian facilities 38ha
Managed by Hume City Council

Jacksons Creek biik wurrdha Parklands

Still developing to reach 1000ha by 2040, visitors can already enjoy Emu Bottom Wetlands, the Nook to Skyline Reserve and more.

Co-Managed by Wurundjeri Woi-wurrung, Parks Victoria, DEECA, Melbourne Water, Greater Western Water, Hume City Council



marram baba Merri Creek Parklands

Still developing to reach 2700ha by 2050, visitors can already enjoy galada tamboore, Northpark Nature Reserve and more.

Co-Managed by Wurundjeri Woi-wurrung, Parks Victoria, DEECA, Melbourne Water, Yarra Valley Water, MCMC, Hume City, Whittlesea City & Mitchell Shire



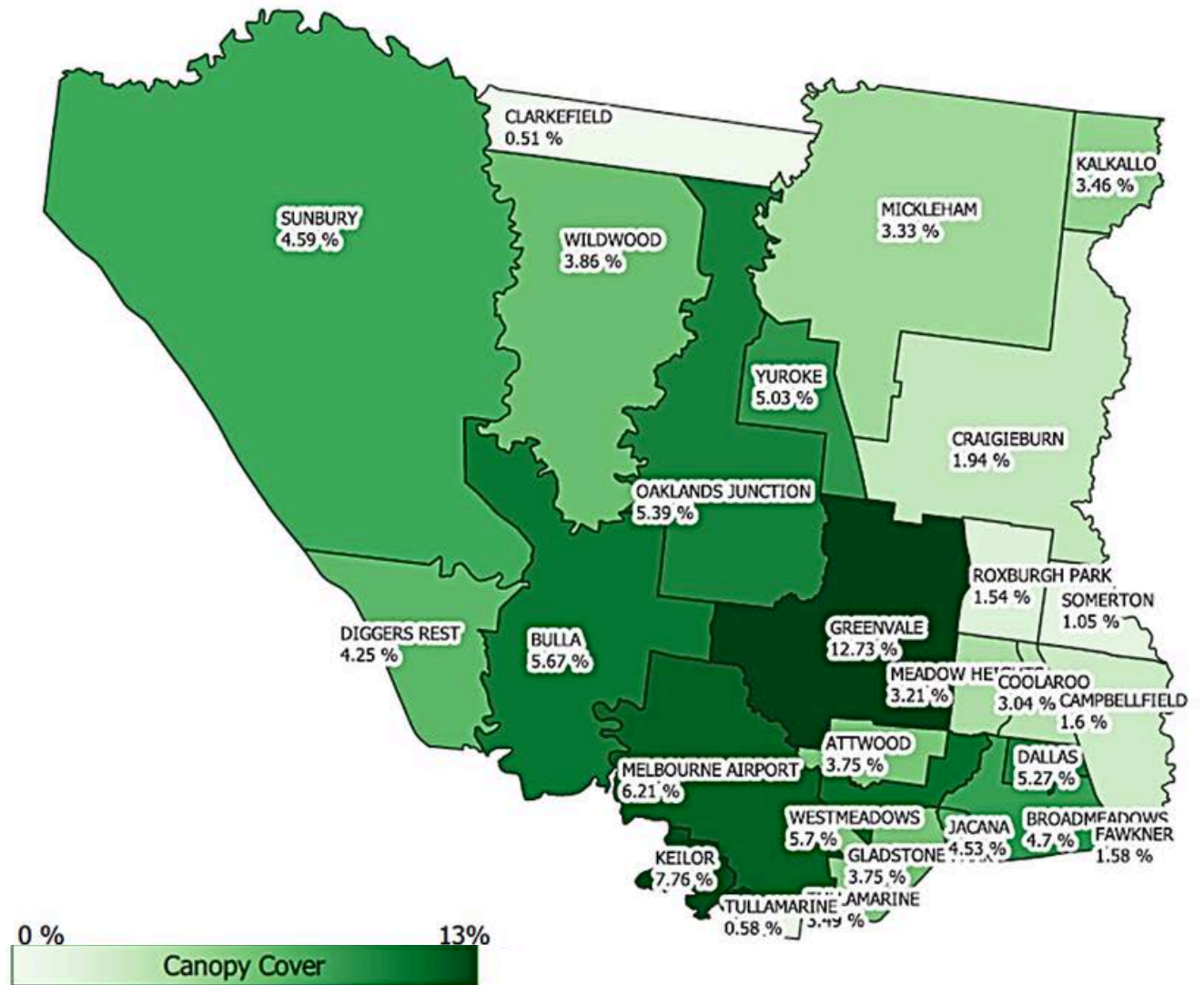
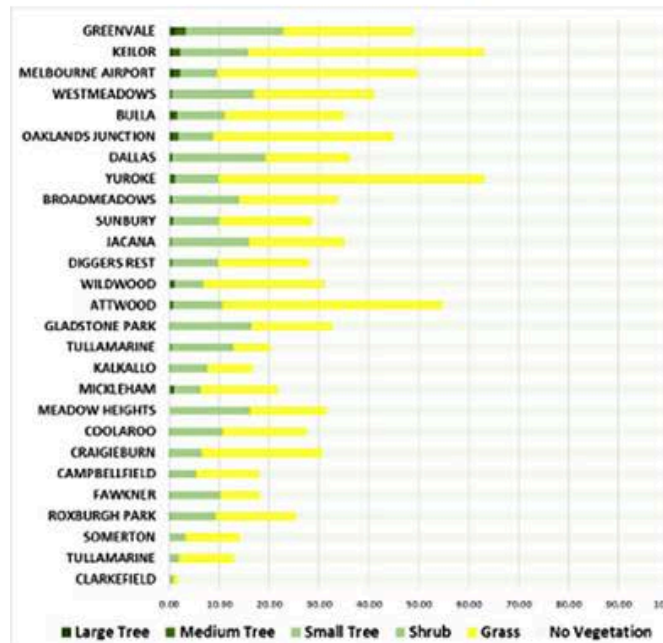
THE CURRENT STATE OF OPEN SPACE

3.5 Urban Forest Canopy

Current Status

Tree canopy cover across the municipality is uneven, some precincts have much higher rates of coverage than others.

Different canopy coverage, and community heat vulnerability of each precinct are considered in open space recommendations.



Source: extracted from Living Melbourne datasets 2008-2012

THE CURRENT STATE OF OPEN SPACE

Urban Canopy Approach and Targets

All reserves will increase their urban canopy and some will feature 'oasis areas'.

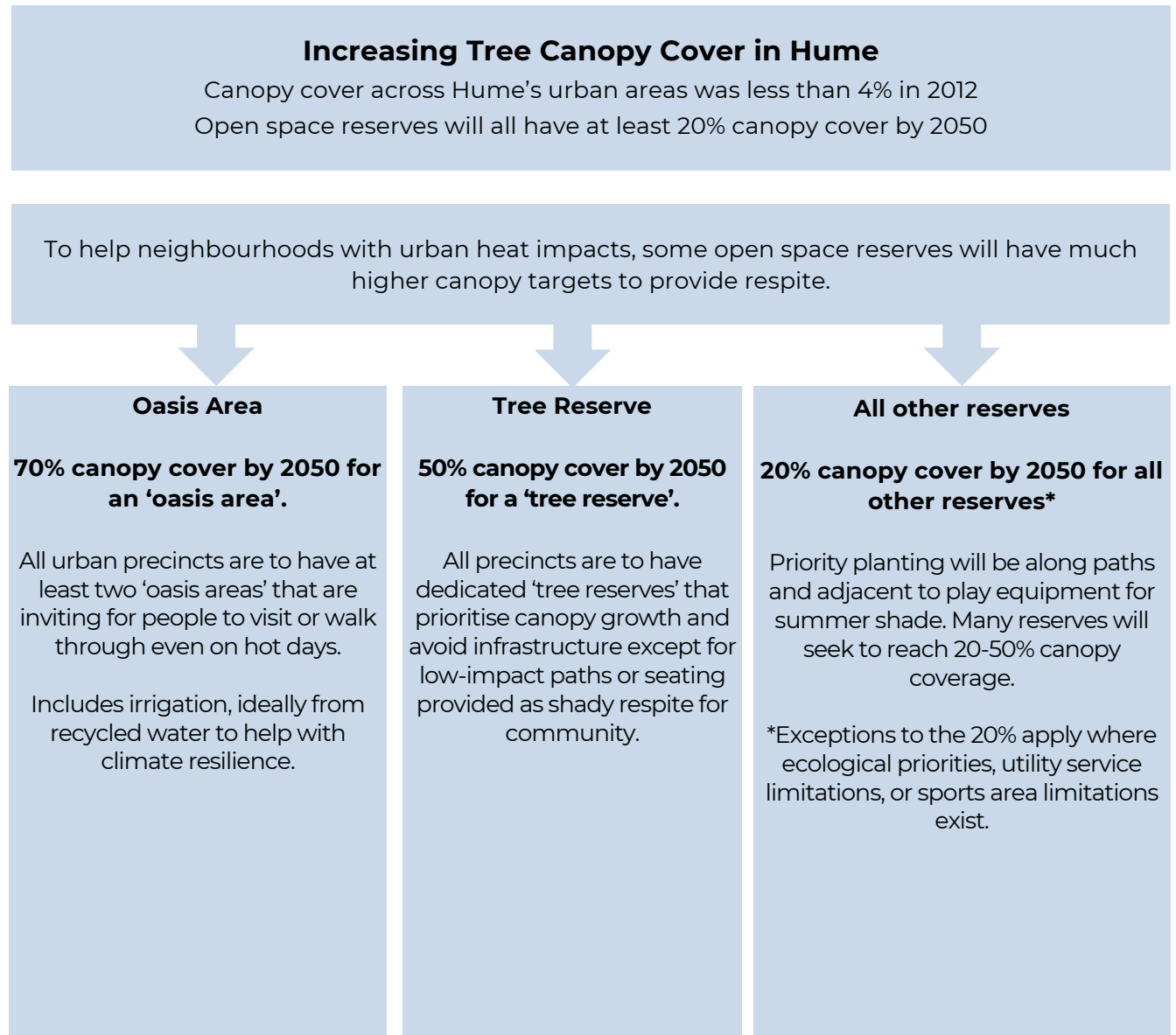
These are a landscape feature rather than a park function. They may be set for a portion of the reserve or the entire reserve.

Streetscape canopy is also important and will be addressed in a upcoming urban forest plan.

Urban Forest Principles

1. Hume's healthy and resilient urban forest improves the urban environment and responds to a changing climate
2. Hume's urban forest contributes to equity and social justice for residents
3. Hume's communities value the urban forest in both the public and private realm, and participate in its creation and maintenance
4. Hume's urban forest improves the urban environment and contributes towards the identity and character of its neighbourhoods
5. Hume will protect and retain the existing urban forest, with heritage, indigenous and large old trees as a priority, while establishing the next generation of urban trees
6. Hume's urban forest contributes to local biodiversity
7. Hume will innovate and collaborate to be a leader in urban forestry.

Principles adopted by Council 23 March 2020



THE CURRENT STATE OF OPEN SPACE

3.6 Open Space Character in Hume

Hume's open space character is *unified* by:

- An **ancient landscape** reflected in volcanic cones, basalt plains, deeply cut river valleys, stony rises, soils, redgums, grasslands, threatened flora and fauna species and ongoing Wurundjeri Woi-wurrung culture
- Multiple **waterways** flowing, with some forming and connecting, across all areas of the municipality
- Multiple **hilltops** and volcanic cones with scenic views ranging from Mt Holden, Redstone Hill, Mt Ridley Hilltop, and Mt Aitken
- Multiple **expansive regional parks** across Hume including Woodlands Historic Park, Greenvale Reservoir, Jacksons Creek biik wurrdha Regional Parklands, marram baba Merri Creek Regional Parklands, and Mt Ridley Nature Conservation Reserve
- Extensive **walking and cycling** trails along many waterways such as Yuroke Creek, Blind Creek, Aitken Creek and more
- **Canopy cover** challengingly low for all areas averaging 4%
- **Active formal sports** facilities and kick about areas distributed well throughout the municipality
- **Nature reserves** maintained throughout Hume providing a spread of habitat and ecological services
- **Playspaces** provided throughout all the suburbs, progressively supporting all-abilities, and a greater need for increased tree canopy and shade
- Open spaces that do not yet integrate well with activity centres and shopping strips requiring better **placemaking** in all precincts

And *differentiated* by:

- Farmland and **rural viewscapes** exist in the central and northern green wedge areas of Hume compared to the highly urbanised environment of suburbs in the east
- Open spaces in the older **established suburbs** in the south and in Sunbury have higher proportion of aged visitor facilities requiring renewal
- People living in the suburbs of **Broadmeadows, Jacana, Coolaroo, Gladstone Park, Campbellfield, Greenvale and Tullamarine** have the furthest to walk to open space
- Open spaces in the **new growth areas** of Kalkallo, Mickleham, Craigieburn, Sunbury and Greenvale are developed to a higher standard than the established areas. This is done to help offset the limitation of smaller backyards, and it is important to ensure that developer-installed visitor infrastructure can be maintained in the long term.
- the capacity for **events and outdoor gatherings**, which need to be supported in all areas of Hume. The greatest need is in Sunbury.

THE CURRENT STATE OF OPEN SPACE

3.7 Reflecting Trends in Open Space Use

Hume's Open Space Strategy is applying principles that reflect the following trends in open space use

Interest in informal recreation	Walking is the most popular form of physical activity. Lifestyles, patterns of work and sport preferences, are moving away from organised structured sport. Large regional parks and waterway parks are popular for connecting to nature and helping instill a sense of wellbeing.
Events and outdoor gatherings	Demand for large event spaces continues along with demand for small outdoor gatherings.
Increased dog ownership	Greater dog ownership requires more off-leash areas in open space.
Design for women, girls and gender diverse people in open space	People use open space differently. Safety, viewlines, and comfort are important for people who feel vulnerable. Women more often bring children and seek to relax. Toilets and changing rooms need to support safe use by all.
Shade, accessibility, and all abilities	Consistent demand for shade in reserves, accessible and inclusive play spaces, and design that supports the needs of an ageing population.
Open space and coffee	Visiting open space increasingly involves picking up a coffee as part of the trip. Planning for open space near local shops can revitalise an area as a destination subject to good design and maintenance.
Technology	Technology options to improve the experience of parks is improving rapidly. For example; wifi access, safety features, responsive lighting, programmable locks and gates, recharging points, interactive wayfinding, and data collection to measure and respond to use
Community expectations & maintenance costs	New parks within Hume's growth area developments are embellished to help housing sales. This is creating equity issues for established suburbs. Maintenance and renewal costs are rapidly increasing creating a gap in community expectations and delivery.
Retaining and sharing open space	Requests for conversion of open space to non open space uses remains frequent and requires diligence to defend. Sharing open space with schools remains challenging as change of school leadership and changing emphasis on privacy often results in change of commitment.
Traditional Owners	As ongoing traditional custodians, the return of Wurundjeri Woi-wurrung land management is increasingly important for sites of cultural and ecological importance.

THE CURRENT STATE OF OPEN SPACE

3.8 Key open space challenges and drivers for Hume



Equity

Equity refers to fairness and social justice and is distinguished from equality. Equity recognises that we do not all start from the same place and adjustments are needed to help address imbalances.

Hume experiences inequities in open space across communities. This is particularly evident in the established suburbs. Broadmeadows and Roxburgh Park precincts have the least open space per person and often the greater need for playspace renewal. Broadmeadows and Somerton have the biggest gap areas.



Quality

New open spaces in suburban growth areas can often have more visitor infrastructure than in the open spaces in established areas.

Quality refers to turf, horticulture, trees, paths, seating and other visitor infrastructure. There is a need to apply updated infrastructure and maintenance levels of service to ensure equity.

Reserves with playspaces are spread across Hume. There are 269 in 2024 with more being created in the growth areas. The playspace renewal program needs to be expanded to meet safety and community expectations.



Quantity

Approximately 7% of Hume is public open space.

Hume has total of 3886 hectares of open space in 2024 with over 3,002ha accessible to visitors.

Hume City manages 1954ha and the rest is primarily managed by Parks Victoria, Melbourne Water and other State agencies. This includes the 838ha Woodlands Historic Park.

Across the municipality, Hume has a similar amount of open space per person compared to similar growth area Councils (see table upper right).



Distribution

94.5% of urban homes in Hume meet the benchmark of being within 400m walk of open space. This falls to 69% in Somerton precinct and 79% in Broadmeadows precinct (see table right) This affects the suburbs of Broadmeadows, Jacana, Dallas, Coolaroo, Greenvale, Campbellfield, Gladstone Park, and Tullamarine.

Except for Greenvale, all gap areas are in suburbs with high or medium rates of social, economic and health disadvantage.

Often gaps in established suburbs are from street design and cul-de-sacs that limit easy walking access.

Local Government	Amount of visitable open space owned or managed by Council (hectares per 1000 residents)
Hume	6.5 (2023)
Casey	6.16 (2023)
Knox	7.54 (2023)
Wyndham	4.8 (2022)

Precinct	Homes within 400m of open space (visitable)	Open space per 1000 people (visitable)
Sunbury North	Not applicable, as predominantly rural	
Lancefield	99%	13.5ha
Sunbury	98.3%	8.1ha
Redstone	98.7%	16.5ha
Rural	Not applicable, as predominantly rural	
Greenvale	91.5%	48.2ha
Valley	97.3%	7.5ha
Broadmeadows	79%	8.8ha
Roxburgh Park	100%	5ha
Somerton	69%	17.9ha
Craigieburn	99%	7ha
Mickleham	94.7%	4.6ha
Kalkallo	95.5%	18ha

THE CURRENT STATE OF OPEN SPACE



Forecast Population and Land Use Changes

Hume's population is expected to grow by more than 130,000 people in the next 20 years, with most of this growth in new suburbs which have allocated open space and infrastructure.

Some existing urban areas will also undergo population growth leading to higher population densities particularly in existing centres such as Broadmeadows, Craigieburn and Sunbury. This will put pressure on existing open spaces but also provide opportunity to increase their quality and resilience.



Land Administration

Not all open space reserves are secured with the right titles, planning and administrative controls.

Preliminary audits indicate approximately 28% of Hume's open space land does not yet have 'public park' planning zone.

Multiple open space reserves are not yet vested to Council on the title of subdivision.

Multiple Crown land sites have no Committee of Management.

Maintaining shared use agreements with schools is challenging when there is a change in school leadership.

Addressing these issues will protect open spaces and foster their ongoing stewardship.

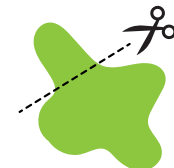


Urban Growth and Open Space Contributions

Hume has 21 Precinct Structure Plan Areas (PSPs), with 15 completed, 2 being prepared (Greenvale North Pt 2 and Somerton Road), and 1 at due-diligence stage (Merrifield North).

In these growth areas, developer contributions via the Planning and Environment Act will fund open space provision via land or monetary contributions.

Open space contributions received from in-fill development via the Subdivision Act (typically provided as a monetary contribution) can be used by the City to help fill known gaps in open space provision.



Loss of Open Space

Despite an increased recognition that open space is not surplus space, there continues to be a loss of open space land due to road widening, community building expansions, utility easements, and encroaching residential expansion.

For example, the Aitken Boulevard Extension south of Somerton Road, if not designed well will remove over 50ha of open space primarily from the Valley and Greenvale precincts.



Encumbered Open Space

Open space is sometimes encumbered by infrastructure or functions which can limit their visitor access and landscaping potential.

Despite these limitations, most sites are accessible. The range of encumbrances are listed below along with Hume's approach for their open space use:

- *'drainage'* - good design is enabling some retarding basin and "sump" areas to incorporate walking loops and attractive wetlands
- *'pipetracks'* - increasingly being used as linear access trails
- *'conservation'* - most conservation land can be walked through providing an interesting open space experience
- *'electricity easement'* - often used for linear access and dog off-leash areas
- *'rail reservation'* - used for biodiversity conservation and linear access trails
- *'proposed road'* - limited to temporary uses. Primarily applies to Outer Metropolitan Ring Road, Bulla Bypass, new road bridges in PSP areas, and the proposed Aitken Boulevard duplication.

Sharing open space with schools, institutions, organisations and businesses can also provide more open space for the community to enjoy.

THE CURRENT STATE OF OPEN SPACE

3.9 Open Space Needs Assessment - Precinct Summary

Open spaces provide diverse benefits for people and the environment.

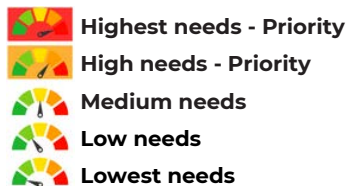
An assessment of the amount and spread of open spaces, along with visitor experiences, quality of assets, and protection ecological and Wurundjeri Woi-wurrung cultural values has been undertaken for each precinct.

The red indicators, followed by orange indicators showcase where the investment priority is most needed over the next ten years.

Please note, the indicators do not reflect how important the need is, or how well it is already represented.

The implementation recommendations in this Open Space Strategy respond to the greater open space needs identified in the Broadmeadows, Valley, and Somerton precincts.

For more details see precinct summaries.



	Experience & Assets	Land Investment	Traditional Owners & Environment	Population 2021
Precinct 1 Sunbury Rural				1062
Precinct 2 Lancefield Road				6141
Precinct 3 Sunbury Central				31,068
Precinct 4 Redstone				4999
Precinct 5 Rural				1805
Precinct 6 Greenvale				20,098
Precinct 7 Valley				24,337
Precinct 8 Broadmeadows				31,446
Precinct 9 Roxburgh Park				37,900
Precinct 10 Somerton				6511
Precinct 11 Craigieburn				75,382
Precinct 12 Mickleham				10,648
Precinct 13 Kalkallo				6400

Criteria

Experience and Assets

Where more work is needed to improve the diversity and number of reserves, plus the quality of assets for:

- social recreation experiences
- sporting experiences
- nature based experiences
- connectivity and trails
- tree canopy
- outdoor gathering and event capacity
- off-leash dog areas
- community gardens.

Assessed against precinct population.

Land Investment

Where new land is needed to fill:

- *residential gap areas* - number of homes not within 400m walk of open space
- *connectivity gap areas* - access and accessibility gaps for reserves
- *biodiversity and cultural gap areas* - priority areas of ecological and cultural significance.

Traditional Owners & Environment

Where more work is needed to protect and enhance ecological and cultural values

THE CURRENT STATE OF OPEN SPACE

3.10 Community Engagement Findings

Summary of findings from the Parks Close to Home survey (2021)

2000+ responses from residents from across Hume as well as workers and visitors who live elsewhere (1994 valid responses).

- Access to nature was the primary motivation for people visiting parks
- 88% of respondents walk to their park close to home (only driving if they don't have a 'good' local park)
- Key reasons for not visiting a park close to home is that there simply isn't one, or the quality doesn't encourage regular visitation.
- The most visited parks in Hume are regional and district level parks, large enough to provide a range of activities to service a diverse range of people

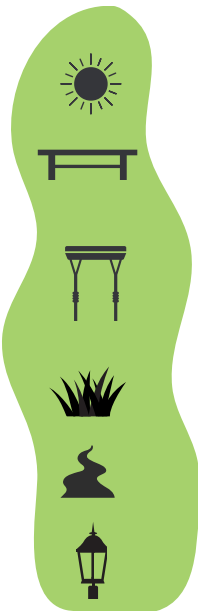
Key Finding

According to the Parks Close to Home Survey, the community value district/regional scale parks with a variety of high quality experiences, especially for adventure play for multiple age groups, or access to nature.

Parks close to home, within walking distance are not visited as often and considered to be of poor quality.

Quality means shade, seats, grass, pathways and lighting.

Top things people want to see in parks (% of respondents)



More shade - from trees and structures (79.9%)

Seating/tables (66%)

Playspaces with swings more adventure play or challenging play, and a split between junior and senior play (59.2%)

Large grass open space - irrigated (53.3%)

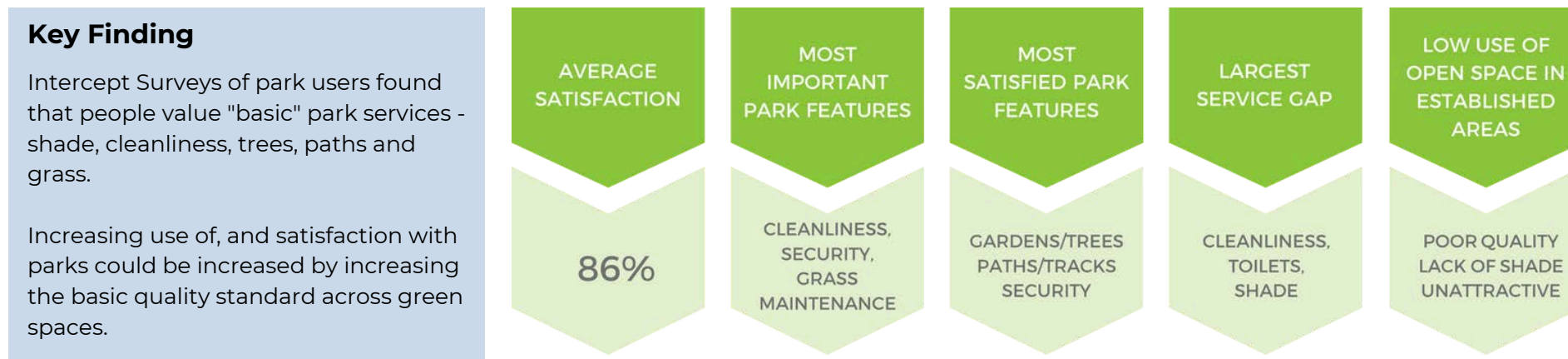
Better and more paths (53.6)

Lighting (50.3%)



Findings from In-Park User Surveys (2021):

225 community intercept surveys were conducted in 22 parks, in November 2021, with the following results:



Findings from Open Space Strategy Background Paper Community Consultation held in March-April 2023

Feedback included 30 social media comments.

These covered:

- Approx 23% of requested shade and trees
- Approx 20% felt parks were overgrown with weed problems
- Approx 17% felt parks have a litter problem
- Approx 13% requested more nature, native fauna, botanical gardens
- Approx 13% requested benches and tables and toilets
- Concerns were expressed about potential 15 minute city limitations
- Some park specific requests were made for facilities

Six emails were also received.

- Request for more basketball courts
- Request for more shade especially around playgrounds
- Request for more connected bike paths preferably off road
- Concerns about safety in parks and misuse at night. The concerns noted relate to perceived safety and lack of sleep.
- Concerns about potential vandalism
- Seeking education for dog owners
- Request for stronger references to proposed Merrifield Linear Park.
- 2 of 6 emails congratulated Hume on the good work.

4. IMPLEMENTATION



THE FUTURE OF OPEN SPACE

4.1 Decision Making Frameworks

Prioritising and scoping “protect” actions

This framework has guided “protect” recommendations and will be further drawn upon to help maximise open space outcomes.

There is to be no net loss of open space. A reallocation of open space from areas of generous supply to gap areas can only be supported if the removal does not detract from ecological, cultural, placemaking, and safety values.

Where open space is adjoining built form, prioritise their connection with each other by providing a frontage that encourages people walk along or look out onto the open space. This will provide passive surveillance of open space, and help enrich the public domain.

The framework questions shown on the right help prioritise projects and guide design decisions.

Diverse	Does the project help protect Wurundjeri Woi-wurrung cultural values, on-Country connections, stories, or ceremony as self-determined?	Equitable	Does the project protect open space qualities for communities with the most need?
	Does the project protect and interpret heritage, places and stories valued by diverse community?		Does the project help to protect against litter, dumping and anti-social behaviour?
Resilient	Does the project protect ecological values?	Accessible	Does the project protect or reclaim open space from encroaching development, works and interfaces?
	Does the project protect existing trees and support their ongoing healthy growth?		Does the project promote or educate for the care of open space?
	Does the project protect continued access to parks by protecting against floods, storms or fires?	Multi Functional	Does the project support multiple uses of space to help protect infrastructure-free areas?

PROTECT

Protect conservation, heritage & Wurundjeri Woi-wurrung values

Protect continued access to parks by preparing for climate change

Protect open space from encroaching development, works & interfaces

THE FUTURE OF OPEN SPACE

4.1 Decision Making Frameworks

Identifying and prioritising open space investment

This framework has guided 'optimise' recommendations and will be further drawn upon in project selection and design to optimise open space outcomes.

Identify

Will the open space be renewed or upgraded?

Renewal

Replacing an asset with one that performs the same core function, even if it is better quality. It applies to assets that are damaged or at end-of-life.

Playspaces are renewed every 15-20 years. Additional canopy is considered renewal (except for oasis areas)

Upgrades

Adding new assets that either serve additional people or provide a new visitor experience.

Upgrades apply, subject to budget, when needing to:

- service a growing population
- meet the infrastructure levels of service where there has been a shortfall
- meet new infrastructure levels of service when a reserve has been reclassified
- compensate for a lack of nearby open spaces (eg Broadmeadows)
- fill a gap in providing for community events

Prioritise

Diverse

Does the project maintain or improve the mix of open space experiences in the neighbourhood?

Does the project support the heritage, places and stories valued by the diverse community?

Is the project in partnership with the Wurundjeri Woi-wurrung?

Resilient

Will the project increase canopy cover by 20% - 70% by 2050?

Will the project enhance biodiversity and habitat links?

Will the project enhance capacity to respond to floods or drought?

Will the project increase resilience to high visitor use?

OPTIMISE

Open spaces designed and maintained to provide a mix of visitor experiences in each neighbourhood

Equitable

Does the project benefit communities lacking in access to open space experiences?

Does the project help make open space safer and easier for women and gender diverse people to visit?

Accessible

Does the project improve connections and accessibility for people of all ages and abilities?

Does the project improve wayfinding, interpretation, and multi-lingual information?

Multi Functional

Does the project support multiple uses of visitor infrastructure?

Does the project improve environmental outcomes for air, water, soil, or reduced materials?

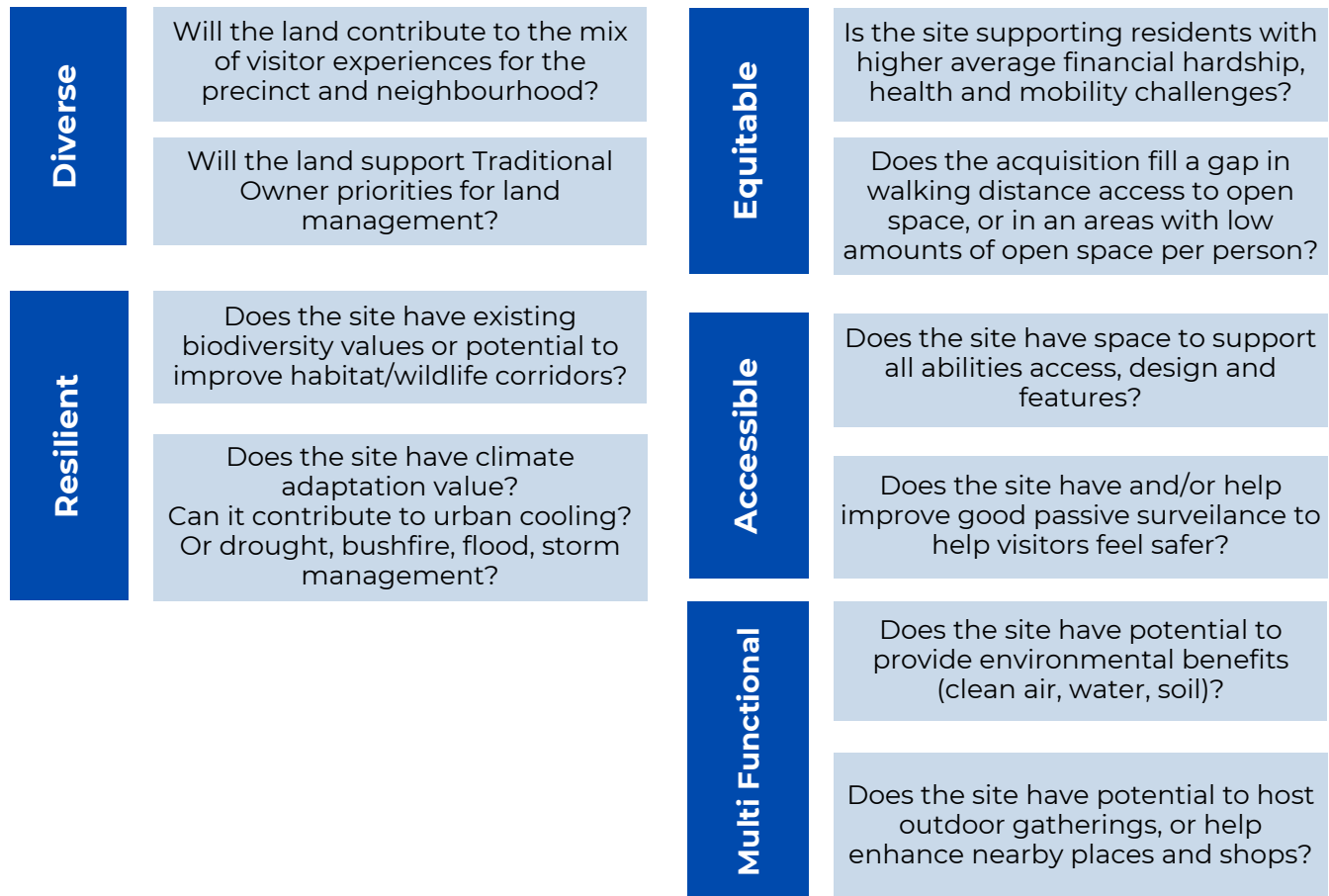
IMPLEMENTATION

4.1 Decision Making Frameworks

Identifying and prioritising land investment for new open space

This framework has guided 'grow' recommendations and will be further used to help ensure potential land investment will maximise open space outcomes.

Equity is prioritised as the most important outcome.



GROW

New open spaces in areas of highest visitor and/or ecological needs, especially along waterways

IMPLEMENTATION

4.2 Open Space Infrastructure - Levels of Service

Infrastructure in Open Spaces

The hierarchy of a reserve - regional, district, neighbourhood or local - relates to the visitors' anticipated length of stay, distance travelled and quality of experience. Size of park also influences the hierarchy.

The primary function of a reserve (see table below) informs the infrastructure required.

Social Recreation	Casual recreation, gatherings, play and enjoyment of green space and nature
Sport	Formal organised sport
Environmental Conservation	Protecting and/or enhancing biodiversity, habitat, cultural or heritage values. <i>Public access may be limited.</i>
Urban & Civic	Gathering place in a busy activity area. Can host organised events, markets, and festivals.
Tree Reserve	Nature enjoyment, and urban forest protection, enhancement and cooling
Linear Links & Trails	Enjoyable walking and cycling links that can also support scenic opportunities
Drainage	Waterway and drainage protection. <i>Public access may be limited.</i>
Ancillary	Infrastructure protection, for example powerline easements. <i>Public access may be limited.</i>

Together the hierarchy and function are used as the basis of the infrastructure *levels of service*.

Please note, the primary function of a reserve can change following a master plan or strategic planning process, or due to a change in environmental or climate change conditions.

Infrastructure Levels of Service

Local - few assets and simple quality designs to cater for nearby residents who walk to the site for short visits.

Neighbourhood - designed to cater for the wider community, these spaces typically have a mix of facilities for informal play, social gatherings and sometimes sport.

District - a drawcard for a wide range of user groups. These sites accommodate longer stays with high quality infrastructure at more than one activity zone to support multiple social gatherings. It sometimes supports sport or environmental conservation.

Regional - These large spaces are often nature based waterways and conservation sites with seating, paths, scenic views. Social recreation and sporting sites include a range of activities that can accommodate use by larger numbers of people.

	Local	Neighbourhood	District	Regional
Length of Stay	up to 1 hr	1-2 hrs	2 hrs +	2 hrs +
Typical Distance Travelled	400m	800m	2km	approx 50km
Visitation Levels	Low	Med-high	High	Very High
Primary Mode of Transport	Walk, Cycle	Walk, Cycle, Drive, Public Transport	Cycle, Public Transport, Drive	Public Transport, Drive

Community Expectations

Residents understandably request Council to provide a wide diversity of visitor infrastructure and nature enhancements in their favourite parks.

Infrastructure levels of service help the community and land developers to understand how Council applies an equitable approach to make sure there are no communities that have less park investment than others.

Two Interrelated Levels of Service

Infrastructure Levels of Service

Sets out the type and number of assets required to be found in open space, depending on the reserve's hierarchy and primary function.

They provide clarity regarding the expected infrastructure, minimise unnecessary investment, support equity across the municipality, and ensure a sustainable asset management approach.

Hume's core infrastructure levels of service are set out in Appendix B.

Maintenance Levels of Service

Sets out the maintenance frequency and type that will be undertaken at parks depending on their hierarchy. The maintenance levels of service will be updated to reflect this strategy.

IMPLEMENTATION

4.3 Priority Actions

To implement the key policy directions, achieve the outcomes proposed and see fruition of the vision for the future of open space, the following priority actions are proposed.



Partner with Wurundjeri Woi-wurrung to better reflect cultural and ecological values in open spaces with an emphasis on waterways



Enhance the park renewal and upgrade program to better support shade, play, gatherings and events, culture, connections and placemaking



Amend the planning scheme to better protect open space and enable supporting developer contributions



Enhance the urban forest program to create cooler shadier open spaces for all to enjoy



Continue park maintenance program including climate adaptation, and new initiatives for litter and dumping prevention



Establish a strategic land investment program to help more urban homes be within 400m walk of open space

IMPLEMENTATION

4.4 Implementation Plan

An implementation plan drawing on the deliveries below will be developed to determine timing priorities, business cases and funding sources.

Protect

- P1 Ecological Conservation**
 Implement Conservation Management Plans for all nature reserves.
- P2 Wurundjeri Woi-wurrung Cultural Values**
 In addition to undertaking regulatory requirements, develop an ongoing partnership with Wurundjeri Woi-wurrung Cultural Heritage Aboriginal Corporation (WWCHAC) to support cultural values, interpretive education and return of Country.
- P3 Planning Scheme and Land Administration**
 Rezone open spaces to protect park status (approximately 28% of Hume's open space does not have an PPRZ or PPCZ zone)
 Work with State Government to ensure all Crown land has Council or another Committee of Management assigned.
- P4 Park Maintenance and Adaptation**
 Continue park maintenance to deliver horticulture, turf, tree, and asset management. Confirm maintenance levels of service. Apply a revised sustainable funding model to respond to increasing climate and emergency management costs arising from droughts, storms, floods and heatwaves.
- P5 Education and Enforcement**
 Undertake expanded program to prevent litter and dumping in open space.

Optimise

- O1 Urban Cooling**
 Deliver urban forest program for open space
- O2 Park Renewal/Upgrade**
 Increase park renewal program to meet target of all play spaces to be renewed within 15-20 years. Confirm infrastructure levels of service. Review distribution of play equipment in local open spaces to determine where any can be rationalised or upgraded.
- O3 Nature Based Walking and Cycling**
 Progressively deliver strategic shared use trail extensions within open space. This will support relaxed visitor experiences within reserves, and in some areas contribute to the wider cycling network.
- O4 Expand Visitor Experiences**
 Progressively deliver new outdoor gathering spaces and new dog off-leash spaces, while continuing to improve our active sport, social recreation and nature-based visitor experiences.
- O5 Community Engagement**
 Deliver more web-based information to encourage more people to visit our parks. Increase signage and interpretative information in parks to help people better connect to their neighbourhoods.

Grow

- G1 Open Space Equity Investment Program**
 Undertake feasibility studies to confirm land investment priorities for Council in providing open space to fill 'gap areas' and 'safety and connection areas'. Where feasible, commence priority acquisition and embed an ongoing program of land investment supported by developer contributions.
- G2 Biodiversity, Cultural and Waterways Land Investment Program.** Advocate to State Government for ongoing purchase of significant biodiversity areas and waterway corridors. Undertake feasibility studies to confirm land acquisition priorities for Council in protecting critical biodiversity and waterway sites.
- G3 Developer Contributions and Planning Controls.** Use implementation plans as the basis for any review of open space contribution requirements in the Planning Scheme. Advocate and partner with State Government to implement public acquisition overlay for Maribyrnong River and lower Jacksons Creek frontage.
- G4 Outdoor Event Spaces**
 Investigate feasibility of providing new civic urban plaza and/or outdoor event space in Sunbury. If necessary, investigate land for large outdoor events in the east of the municipality

IMPLEMENTATION

4.5 Funding

Providing quality open space is an important community service providing multiple benefits to Hume's community and environment.

The Open Space Strategy will support future budget bids seeking to deliver identified priorities. Financial commitments will be made via Council's annual and long term budget processes.

Maintenance and Renewal Funding

Funding for maintaining open space is provided by Council's rate revenue and delivers horticulture, turf, tree, asset management, waste, education and enforcement to protect and renew over 1950ha of Council-managed open space.

Increased construction and approval costs due to supply, regulatory and community expectation changes have increased pressure on the funding. Emergency response works in response to storms, flooding and heatwaves are also increasing.

Renewal of all play equipment within 15-20 years needs to increase from around 7 to 16 reserves a year. Similar increases in servicing are needed in other areas simply to maintain existing parks and landscapes.

Upgrade and Land Investment Funding

Compared to maintenance, funding for upgrades and new land generally have additional funding sources available.

- *Open Space Contributions* collected via the Subdivision Act 1988. This is collected for Hume's established suburbs at a rate between 1-5% of project costs. This is almost always a financial contribution however it could be a land contribution. The contribution rates are low and need to be reviewed.
- *Developer Contributions* collected via the Planning and Environment Act 1987 can be a financial or land contribution. This is collected for Hume's growth areas in accordance with State Policy at a rate of 10% (with between 2.03% and 4.48% allocated for local parks). The contribution funding rates are low and need to be reviewed.
- *Partnerships* are valuable. For example
 - working with Melbourne Water on open space assets along Moonee Ponds Creek and Attwood Creek.
 - working with DEECA on Jacksons Creek biik wurrdha Parklands.
 - working with developers on new parks
- *Grants* are available for new initiatives such as revegetation, trail upgrades and more

Next steps

- Continued review and monitoring of asset **maintenance costs** and levels of service to ensure new costs pressures are addressed
- Expenditure of **open space contributions** will be strategically aligned to the priorities in this Open Space Strategy. This includes identified upgrades, and additional land in gap areas such as Broadmeadows. Consider the impact of new Melbourne Airport Overlay on subdivisions and the funding implications for open space.
- The **strategic open space land investment program** will progress from gap analysis into feasibility studies. The most feasible sites will be presented as budget bids for acquisition.
- Proactive approach to **partnership** initiatives set out in this Open Space Strategy. For example, with State Government for Maribyrnong River Parklands, with Dept of Housing for open space links, and voluntary urban design frameworks with business.
- Review and update **open space contribution** rates collected via the Subdivision Act 1988
- Undertake review, implementation plan, and cl. 53.01 **planning scheme amendment** for developer contributions to more accurately reflect the costs of providing new open space land or upgrades to service new residents.

5. PRECINCT PROFILES



PRECINCT PROFILES

5.1 Precinct Level Needs Assessment

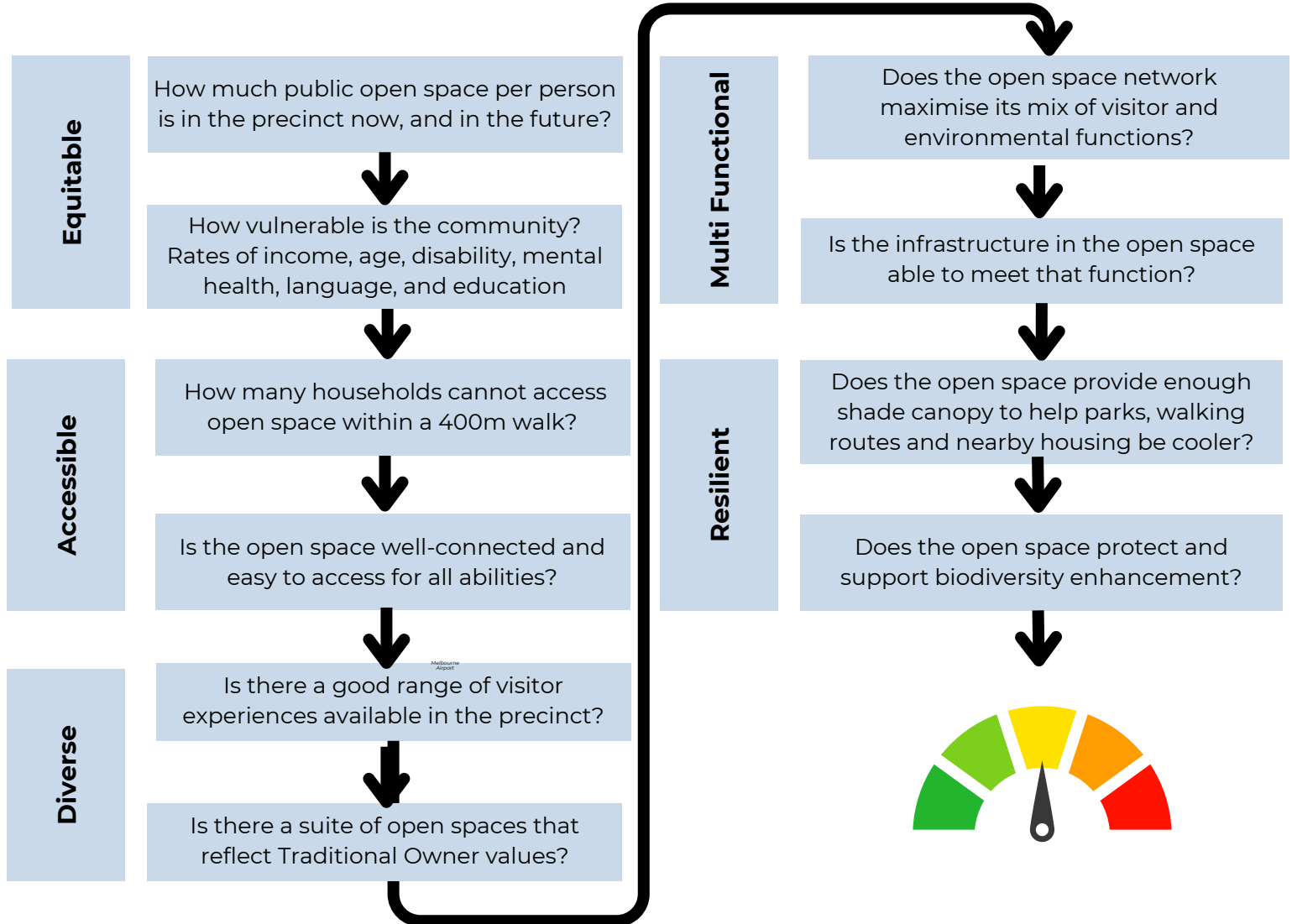
A needs assessment has been undertaken for each precinct.

The result is an overarching indicator for each precinct.



This process helped prioritise precinct needs for open space.

Summary profiles are provided for 13 precincts across Hume.



6. GLOSSARY



GLOSSARY

Term	Definition
Accessible	Open spaces that allow visitor access and have clear entry points.
Accessibility	Open spaces that are designed for use by people of all abilities. Also known as 'universal design' and 'design for all-abilities'.
Alternate water source	Using non-potable sources of water, such as recycled water, harvested stormwater or rainwater tanks. Hume's <i>Integrated Water Management Plan</i> guides the use and opportunities for using alternate water sources in a time of climate change.
Civic Urban Plaza	A public space for formal and informal gatherings including entertainment events, markets, festivals and information sharing. They serve as a focal point and are located near significant buildings and public transport and include internet and digital infrastructure. Hume's urban plazas include Broadmeadows Global Learning Centre and upcoming Hume Central, Olsen Place and Dallas Activity Centre.
Committees of Management	Land acquired by State Government is known as Crown land. Once purchased a voluntary Committee of Management may be appointed for its management. This can be Traditional Owners, Council, sporting groups, or another non-profit organisation.
Conservation Management Plan	Sets out the objectives to improve or maintain the natural values within each conservation reserve or revegetation area. The objectives then drive the operational works and ensure that its implementation is strategic and meeting Federal and State legislative obligations and biodiversity aims.
Conservation Values	An overarching term to reflect the range of Federal, State and Local biodiversity and habitat values to be protected and enhanced through legislation, policy, and management. Hume's <i>Land and Biodiversity Plan</i> guides the management of conservation values across Hume.
Crown Land	Crown land is held by the Crown (the King) of the Commonwealth of Australia and the State of Victoria. For this strategy, Crown land refers to State managed land unless identified as 'Crown - Commonwealth'. Crown land can be reserved for a particular public use, or unreserved. The land can be reserved for different purposes including nature, conservation, parks and reserves. Unreserved Crown Land has not yet been set aside for a particular public use.
Cultural Heritage Management Plans (CHMPs)	A Cultural Heritage Management Plan (CHMP) is a written report prepared by a Heritage Advisor. It includes results of an assessment of the potential impact of a proposed activity on Aboriginal cultural heritage. It outlines measures to be taken before, during and after an activity in order to manage and protect Aboriginal cultural heritage in the activity area. A CHMP is required when a 'high impact activity' is planned in an area of 'cultural heritage sensitivity'. These terms are defined in the Aboriginal Heritage Regulations 2018. In these circumstances, planning permits, licences and work authorities can't be issued unless a CHMP has been approved for the activity.

Term	Definition
Developer contributions	Developers and government share responsibility for providing infrastructure to support population growth. Developers may contribute to infrastructure by: the payment of money; providing land; constructing infrastructure on behalf of public authorities. Open space contributions are provided via the <i>Subdivision Act 1988</i> ; or via cl 53.01 of the planning scheme, Development Contributions Plans (DCP), Infrastructure Contributions Plans (ICP) or s173 voluntary agreements under the <i>Planning and Environment Act 1987</i> .
Dogs in open space	Access for dog off leash activities can vary. Some locations are large open areas primarily for dog use, while fenced off-leash areas offer the opportunity for dogs to exercise in a controlled environment. These areas may include open ball play areas, rummaging environments and exercise equipment. There are also shared open spaces with restricted access such as sports grounds or time restrictions due to proximity to adjacent uses such as schools. Signage showing boundaries and dog owner responsibilities is at all off leash areas. All public areas of Hume are gazetted as on-lead areas for dogs. The exception are areas listed as 'dog off-leash areas' or 'dog prohibited' areas. See Appendix C
Drainage	A primary function of an open space that acknowledges its role of preventing flooding of adjacent areas. It is rarely flooded and provides valuable open space for most of the time. Waterway land has a primary function of drainage even though visitors may feel its primary function is social recreation.
Equity	Equity refers to fairness and social justice, and is distinguished from equality. Equality means providing the same to all, and equity recognises that we do not all start from the same place and adjustments are needed to help address imbalances. Hume's <i>Social Justice Charter</i> commits to delivering policy, programs and services that support equity and fairness.
Encumbered open space	Open space that is encumbered by infrastructure or functions can limit their visitor access and landscaping potential. Despite these limitations, most sites are accessible. The range of encumbrances includes 'drainage' 'pipetracks' 'conservation' 'electricity easement' 'rail reservation' and 'proposed road'.
Established areas/suburbs	Refers to the older urbanised areas of Hume including Sunbury, Bulla and the southern suburbs of Gladstone Park, Tullamarine, Westmeadows, Jacana, Broadmeadows, Coolaroo, Dallas, Meadow Heights, Roxburgh Park, Campbellfield, Thomastown and Fawkner.
Events	Outdoor events held in Hume can be Council, community or business led. It can include festivals, civic events, markets, and can be free or ticketed, one off or recurring. Large events are over 5,000 people. Events with less than 100 people are classified as 'outdoor gatherings'. Hume's <i>Events and Festivals Strategy</i> guides events using open space.

Term	Definition
Exercise equipment	Also known as fitness equipment. Installation supports free public use by park visitors.
Formal sports	Structured sports organised by a club, association, school or community group and participation is by being a club member or on a fee paying basis. Hume's <i>Outdoor Sports Strategy</i> guides formal sports use of open space.
Function of open space	The primary and secondary function of all open spaces in Hume are classified to ensure decisions are made in the context of this purpose. The functions include: social recreation, sport, environmental conservation, tree reserve, urban and civic, linear links and trails, drainage and ancillary. All open spaces have an urban greening function. The function of an open space can change if agreed in a masterplan, concept plan or strategic planning process. It can also change in response to environmental or climate change impacts on an open space. See Section 2.9
Feasibility Study	A feasibility study is an assessment of the practicality of a proposal. It is applied in this strategy to ensure regulatory assessments, costs and community sentiment is confirmed prior to progressing a project.
Gap areas	The Open Space Strategy seeks equity by providing open space for all suburbs. Households with open space within a 400m walk is the measure. <i>A residential gap area</i> is identified when more than 50 homes have further than 400m to walk to open space. <i>A connectivity gap area</i> is identified when an area has access, visibility or accessibility gaps that require land acquisition or subdivision to resolve. <i>Biodiversity and cultural gap areas</i> are identified where acquisition is needed to protect sites of high value ecological and cultural significance. The 'land investment gap areas program' includes gap analysis, feasibility studies, community engagement, budget bids and land procurement.
Growth areas /suburbs	New suburbs planned and created since 2010. These suburbs include parts of Sunbury, Craigieburn, Greenvale, Mickleham, Kalkallo, and Somerton.
Heritage	The legacy of people, culture, and environments inherited from the past. In its broadest sense, heritage includes natural and built landscapes, physical artefacts, and cultural forms (e.g. music, literature, art, folklore, monuments), intangible culture (values and traditions, customs and practices, spiritual beliefs, language).
Habitat corridor	A habitat corridor is a link for wildlife, generally consisting of native vegetation, which joins two or more areas. Corridors are critical for the maintenance of ecological processes including allowing for the movement of animals and the continuation of viable populations.

Term	Definition
Hierarchy of open space	All open spaces in Hume are classified under the hierarchy of local, neighbourhood, district or regional. This scale informs the levels of service needed for infrastructure and maintenance. The hierarchy is based on expected length of stay; distance travelled; and the "quality" of experience which is related to the number and type of amenities, equipment and services provided. Size also influences the categorisation of a park but there are exceptions. See 2.9.
Informal recreation	Where activity is initiated by individuals rather than by a club or organisation.
Irrigation	Passive irrigation uses gravity to direct rainfall to landscapes instead of to stormwater drain. Active irrigation refers to artificially applying water to a landscape in a controlled manner using pipes and pumps. Temporary irrigation refers to active irrigation required for plant establishment. This is generally two years and longer if needed.
Kick about area	Open grassed area allowing for ball play and other informal play.
Levels of Service	<i>Infrastructure Levels of Service</i> - sets out the type and number of assets required in open space and is dependent on the reserve's hierarchy and primary function. They clarify the expected infrastructure, minimise unnecessary investment, support equity across the municipality, and ensure a sustainable asset management approach. <i>Maintenance Levels of Service</i> - sets out the maintenance frequency and type that will be undertaken at parks depending on their hierarchy and primary function. Section 4.2
Masterplan	A <i>Masterplan</i> is a spatial plan that sets the long term strategic direction for parklands, regional parks, district parks, and some public realm areas. It balances multiple public benefit outcomes and includes short, medium and long term actions.
Landscape Concept Plan	The endorsement of a masterplan sets community expectations and provides a strategic and advocacy basis for funding, grant applications and partnerships. Council funding of masterplan actions will be considered via its annual budget prioritising process. A <i>Landscape Concept Plan</i> is for local parks, neighbourhood parks and stages or areas of a Masterplan. It identifies short-term actions based on site classification, surrounding context, strategic priorities and community need. A budget for construction will be defined and the Plan will propose and arrange elements within this context.
Detailed Design Plan	A <i>Detailed Design or Detailed Documentation Plans</i> are a set of drawings that identify how each element of the <i>Landscape Concept Plan</i> will be constructed. They identify size, quantity, materials, colours, finishes and measures for quality. These are supported by a <i>specification</i> that provides further detail including inspections of works and maintenance requirements. These documents are used for tendering and construction.

Term	Definition
Nature Conservation & Growing Grass Frog Areas	Conservation Areas designated as areas of high biodiversity value set out in Victoria's <i>Biodiversity Conservation Strategy for Melbourne's Growth Corridors (2013)</i> within the Melbourne Strategic Assessment (MSA) Program area.
Nature Reserve	Conservation and revegetation areas managed by Council include 'Nature Reserve' in their name, unless the reserve also has other functions such as social recreation.
Nature-based experiences	Refers to visitor experiences that prioritise connecting people to nature, walking, cycling, sitting, looking at plants and wildlife, reflecting, relaxing and enjoying scenic views.
No net loss of open space	Land cannot be excised or removed from Hume's open space network unless replacement land is created in an open space gap area. Any reallocation of open space from areas of generous supply to gap areas can only be supported if the removal of the open space does not detract from ecological, cultural, placemaking, and safety values.
Oasis area	Oasis areas are a landscape feature, not a park function. They may be designated for a portion of a reserve or an entire reserve. They are inviting for people to visit or walk through even on hot days. They are supported by irrigation, ideally from recycled water to help with climate resilience. They are designed to achieve 70% canopy cover by 2050.
Open space	'Public open space' in this strategy adopts Victoria's ' <i>Open Space for Everyone</i> ' definition: Public land and waters that provide for one or more of these purposes: outdoor recreation; leisure; environmental and cultural benefits; visual amenity; off-road active transport. 'Public open space' is abbreviated to 'open space' in this strategy.
Outdoor Gathering	Outdoor gatherings held in open space refer to small events of up to 100 people. These are often informal events organised by community members such as children's parties or work barbecues. Outdoor gathering in open space will increase as population grows and backyards shrink. Some neighbourhood parks and most district parks can support outdoor gatherings (power, water, shelter, public toilets and a best-fit maintenance schedule). <i>Hume's Events and Festivals Strategy</i> supports outdoor gatherings.
Park maintenance	Council maintenance of parks includes teams supporting horticulture, turf, trees, irrigation, asset management, play, waste, education and enforcement. It includes emergency responses to storms, floods, and heatwaves to ensure safe and healthy parks.

Term	Definition
Parklands	Parklands define larger open spaces that can include different parks or activity nodes. For example, Bulla Parklands, and waterways with multiple parks such as Blind Creek Parklands and Aitken Creek Parklands.
Placemaking	Creating quality places that the community care about, connect with, and want to spend time in. A placemaking approach improves the urban vitality of public spaces and the health, happiness and well-being of the people who use them.
Park Renewal	Park renewal addresses landscape, trails, canopy and if relevant, visitor experiences such as play, exercise, shelters, viewing areas.
Play equipment	Fixed structures for play such as swings, slides and climbing frames. Play elements installed in district, neighbourhood and some local parks where social recreation is the primary purpose. Playspaces do not always need play equipment.
Playspace renewal	Replacing an asset with one that performs the same core function, even if it is better quality. It applies to assets that are damaged or at end-of-life. Playspaces are renewed every 15-20 years. This also applies to exercise equipment renewal. Additional canopy is considered renewal (except for oasis areas). Playspace renewal may be part of a park renewal project or standalone.
Playspace/Park upgrade	Adding new assets that either serve additional people or provide a new visitor experience. Upgrades apply when needing to: <ul style="list-style-type: none"> • service a growing population • meet a shortfall in the infrastructure levels of service • meet new infrastructure levels of service when a reserve has been reclassified • compensate for a lack of nearby open spaces • fill a gap in providing for community events.
Precinct Structure Plans (PSPs)	A Precinct Structure Plan (PSP) is a land use and infrastructure plan guiding the form of subdivision and new development in growth areas. All development in needs to be generally in accordance with the PSP.
Precincts	Hume uses 13 areas called precincts to deepen its analysis and planning. These align with the <i>Community Infrastructure Plan 2023</i>
Restricted open space	Open space that is not available and accessible to the community. This can be to protect ecological and cultural assets or to maintain public safety. If an open space reserve has some areas that are visitable, it is not classified as restricted open space.
Recreation Reserve	Refers to a district level reserve with a primary function for sport.

Term	Definition
Recycled water	One source of alternative water that reduces the demand for valuable potable water. Recycled water will increase resilience in a time of drought when potable water restrictions apply. Recycled water requires energy, which should come from renewable sources.
Reserve	Each open space is considered a reserve. Some reserves with social recreation infrastructure are named parks.
Riparian land	The land along the edges of waterbodies. For Hume open space, riparian land can range from mid waterway to between 30-200 metres either side depending on the ecological, cultural and flooding values of the area.
Social Recreation	Open space with a primary or secondary function of social recreation provides informal recreation, gatherings, play and enjoyment of green space and nature.
Stony rises	Small, isolated rocky outcrops that rise abruptly from the landscape at the edges of ancient lava flows that are subsequently weathered by wind and water flows. They are significant to Wurundjeri Woi-wurrung people.
Traditional Owners	<p>The original and ongoing custodians of the lands and water. Traditional Owners have a responsibility to care for our land Country and have a deep physical and spiritual connection to their Country.</p> <p>The Wurundjeri Woi-wurrung people are the Traditional Owners of land known as the City of Hume.</p> <p>The Wurundjeri Woi-wurrung people are represented by the Wurundjeri Woi-wurrung Cultural Heritage Aboriginal Corporation (WWCHAC) as the 'Registered Aboriginal Party' appointed under the <i>Aboriginal Heritage Act</i> to be the primary guardians, keepers and knowledge holders of Aboriginal Cultural Heritage for their Country.</p>
Tree Canopy	The uppermost trees or branches of trees in a forest, forming an almost continuous layer of foliage. In cities, also known as the 'urban canopy'.
Tree Reserve	Open space with a primary function of tree reserve will prioritise tree growth over other infrastructure provision. Tree reserves provide nature enjoyment, and urban forest protection, enhancement and cooling. Tree reserves are generally small reserves which is why infrastructure other than trees and vegetation is limited.
Urban Canopy Cover	Defined as the percentage foliage cover provided by trees within the urban landscape. Canopy trees are defined as vegetation that is three metres high or taller above the natural ground level.

Term	Definition
Urban Cooling	The reduction of temperatures in urban areas (often known as the urban heat island). Open space can contribute to urban cooling by increasing vegetation to increase shade, reduce heat in the built surfaces and increase cooling through evapotranspiration. Protecting and enhancing waterbodies and surrounding breezes also supports urban cooling.
Urban Forest	<p>Urban forests are made up of public and private trees and understorey vegetation that occurs within private properties, streets, parks, waterway corridors, conservation areas and other public spaces and includes the physical environment (air, soil and water) that supports them. In Hume, the urban forest is defined as being within the Urban Growth Boundary across all land zoning and tenure.</p> <p>In this strategy, urban forest relates to public open space reserves.</p>
Waterways	<p>Waterways include rivers, creeks, streams and adjacent ephemeral water bodies such as billabongs and wetlands.</p> <p>It includes named and unnamed waterways. The named waterways are based on the waterways layer of the 'Areas of cultural heritage sensitivity' in the Aboriginal Heritage Regulations 2018. Section 3.3</p>
Visitable	Open space reserves that the public can access. It includes reserves that may have restricted areas as long as there is some area that is visitable. This is because there are health and wellbeing benefits in walking to and viewing scenic open spaces that cannot be accessed.
Waterplay	Waterplay refers to opportunities to connect to water in open space. This could include fishing or kayaking, and also water fountains, splash parks and mist features.
Wurundjeri Woi-wurrung Cultural Values	Wurundjeri Woi-wurrung Cultural Values go beyond heritage values to also consider cultural landscapes and cultural significance. Cultural significance related to cultural beliefs, customs, spiritual attachment, the archeological record, colonial settler relations, the aesthetic and environmental attributes, and the association held by the Wurundjeri Woi-wurrung people.

APPENDICES



APPENDIX A - WATERWAY PUBLIC OWNERSHIP



Maribyrnong River

A State significant waterway with its source in Bulla at the confluence of Jacksons and Deep Creek. 5 parcels in Crown Commonwealth ownership, 1 parcel in Crown State ownership. 23 parcels in private ownership. Its tributary **Arundel Creek** is all in private or Crown Commonwealth ownership



Merri Creek

The marram baba parklands will increase public ownership. Enjoyed at galada tamboore, Northpark Nature Reserve etc. Tributaries:

- **Kalkallo Creek** Mix of public and private ownership. John Laffan Reserve
- **Aitken Creek** All in public ownership following pending PSP completion. Eg Craigieburn Gardens, Burt Kur Min Reserve, Highlands Lake
- **Malcolm Creek** All in public ownership except confluence and headlands. Eg Centennial Park Drive Reserve
- **Merlynston Creek** Most in public ownership with more to be negotiated. Enjoyed at Jack Roper Reserve, Seabrook Reserve. Its tributary **Campbellfield Creek** is partly in public ownership



Jacksons Creek

The central 'biik wurrdha' parklands reach will increase public ownership. Enjoyed at The Nook, Emu Bottom Wetlands, Jacksons Hill Reserve. Its tributaries include:

- **Blind Creek** All in public ownership except confluence with Jacksons Ck and headwaters. Includes Sunbury Recreation Reserve. Its tributary **Heyson Drive Drain (Creek)** almost all in public ownership.
- **Kismet Creek** All in public ownership except headwaters. Enjoyed at Spavin Lake. Its tributary Billy Goats Creek is all in private ownership.
- **Harpers Creek** Public ownership gradually increasing. Eg Wanginu Park
- **Longview Creek** All in private ownership.



Moonee Ponds Creek

From its source in Oaklands Junction, all but headlands are in public parkland. Enjoyed at Woodlands Historic Park, Jacana Valley Parklands, Westmeadows Reserve etc. Its tributaries include:

- **Yuroke Creek.** All in public ownership. Eg Broadmeadows Valley Park. Its tributaries include:
 - **Brodies Creek.** Public ownership gradually increasing.
 - **Greenvale Drain (Creek).** All in public ownership
 - **Otways Crescent Drain (Creek).** All in public ownership
 - **Shanklands Drain (Creek).** All in public ownership
- **Steele Creek** and **Steele Creek North.** All in public ownership or Airport
- **Attwood Creek.** Almost all in public ownership



Deep Creek

Almost all in private ownership except Trap Street Reserve, Bulla Parklands, Bulla Crown Lands, Bulla Bulla Streamside Reserve, Konagaderra Bridge Reserve, Martin Dillon Reserve. Its tributary **Konagaderra Creek** is all in private ownership.

Emu Creek. All in private ownership.

Kororoit Creek East Branch. All in private ownership

Existing or Planned
Public Ownership



APPENDIX B

Open Space Infrastructure Proposed Levels of Service

Local

These spaces contribute aesthetically to the landscape and are generally used for daily recreational activities like walking the dog or playing on a playground after school. They can reach 1ha in size however are usually much smaller.

Local parks are designed and managed to cater for residents who live close by. They are not designed to host events or sports, and are intended for short stays of an hour or less.

Park infrastructure must be made of robust materials with easily replaceable components to support maintenance. Sustainable materials are preferred.

Irrigation is not supported in local parks, except where Council determines it has high visitation levels or special horticultural requirements. Temporary irrigation can be provided for plant establishment.

All parks will have healthy tree canopy between 20-50% tree canopy cover and higher for tree reserves and oasis areas.

Additional design details for infrastructure is provided in the Hume Landscape Guidelines.

	Open Space Function			
	Linear Tracks and Trails	Social Recreation	Tree Reserve	Environmental Conservation
Infrastructure				
Bicycle Racks	0	0	X	X
Drinking Fountain/Tap	0	0	X	X
Fencing/ Bollards	0	0	0	0
Garden Beds	0	0	0	X
Kickabout Area	X	00	X	X
Lighting – Safety/Timed After Hours	0	X	X	X
Paths - Shared - Pedestrian and Cycle - 2.5-3m	0	0	X	0
Paths - Primary - Pedestrian 2.0m	0	0	X	0
Paths - Secondary - Pedestrian 1.5m	0	0	0	0
Play Space	X	0	X	X
Public Art	X	0	X	X
Public Litter Bins	0	0	X	X
Seating - chair with back and arms	0	000	0	0
Seating – picnic setting	0	0	X	0
Seating - other	0	0	0	0
Shelter	X	0	X	X
Tree Canopy	000	000	000	0
Signage - Interpretive/Wayfinding/Park Entry/Advisory	0	0	X	0

All other infrastructure is not permitted unless otherwise agreed

X - Not permitted
0 - May have
00 - Should have
000 - Must have

APPENDIX B

Open Space Infrastructure Proposed Levels of Service

Neighbourhood

These spaces typically have a mix of facilities and amenities. They are generally sized between 1-5 ha and have features that attract a wider community.

Neighbourhood sport sites have facilities for one sport, such as one oval. They are not lit for nighttime use and typically cannot host tournaments or events.

Infrastructure must be made of robust materials with easily replaceable components for ongoing maintenance. Sustainable materials preferred.

Irrigation is not supported in neighbourhood parks, except where Council determines it has high visitation levels or special horticultural requirements. Temporary irrigation (up to two years) can be provided for plant establishment.

All parks will have healthy tree canopy between 20-50% tree canopy cover and higher for tree reserves and oasis areas.

Additional design details for infrastructure is provided in the Hume Landscape Guidelines.

	Open Space Function			
	Sport	Linear Tracks and Trails	Social Recreation	Environmental Conservation
Infrastructure				
BBQ Facilities	0	X	0	X
Bicycle Racks	000	0	0	0
Car Parking - Sealed (permeable or passively irrigating adjacent areas)	000	0	0	0
Court - Tennis or Netball	0	X	0	X
Court - Half-Court or Multisport	0	X	0	X
Dog Off Leash Area (not adjacent to areas of activity)	0	0	X	X
Drinking Fountain/Tap	000	0	000	X
Fencing/Bollards	0	0	0	00
Garden Beds	000	0	000	X
Kickabout Area	0	X	000	X
Lighting – Safety/Timed After Hours	0	0	0	X
Outdoor Exercise/mobility equipment	0	0	0	X
Outdoor Gathering Facilities (power, water, shelter, public toilet)	0	X	0	X
Paths - Shared - Pedestrian and Cycle - 2.5-3.0m	00	00	00	0
Paths - Primary - Pedestrian 2.0m	00	00	00	0
Paths - Secondary - Pedestrian 1.5m	00	00	00	0
Play Space	0	X	000	X
Public Art	0	0	0	X
Public Litter Bins	000	0	000	X
Public Toilets	0	X	0	X
Scooter/Bike/Pump Track/Skate Elements	0	X	0	X
Seating - chair with back and arms	000	0	000	0
Seating – picnic setting	000	0	000	0
Seating - other	0	0	0	0
Shelter	00	0	00	0
Signage - Interpretive/Wayfinding/Park Entry/Advisory	000	0	0	0
Sports - Field	000	X	0	X
Tree Canopy	000	000	000	0

All other infrastructure is not permitted unless otherwise agreed

X - Not permitted
0 - May have
00 - Should have
000 - Must have

APPENDIX B

Open Space Infrastructure Proposed Levels of Service

District

These large spaces are designed to attract a wide range of user groups for different purposes and activities, simultaneously.

Supporting infrastructure caters for many visitors, who have mostly driven to the site and expect to stay for multiple hours.

At sport sites it is expected that there will be two or more sport facilities (may be for the same sport) such as two ovals, or an oval and courts for example.

Infrastructure must be made of robust materials with easily replaceable components for ongoing maintenance. Sustainable materials preferred. Bespoke feature infrastructure can be considered in regional parklands.

Irrigation is supported in district parks in areas of high use or special horticultural requirements. This is to be sourced from recycled water or harvested from stormwater unless agreed by Council.

All parks will have healthy tree canopy between 20-50% tree canopy cover and higher for tree reserves and oasis areas.

Additional design details for infrastructure is provided in the Hume Landscape Guidelines.

X - Not permitted
0 - May have
00 - Should have
000 - Must have

	Open Space Function			
	Sport	Linear Tracks and Trails	Social Recreation	Environmental Conservation
Infrastructure				
BBQ Facilities	000	X	000	X
Bicycle Racks	000	0	000	0
Car Parking - Sealed (permeable or passively irrigating adjacent areas)	000	X	000	0
Court - Tennis or Netball	0	X	0	X
Court - Half-Court or Multisport	0	X	0	X
Dog Off Leash Area (not adjacent to areas of activity)	0	0	0	X
Drinking Fountain/Tap	000	X	000	X
Event Facilities (power, water, shelter, loading area)	0	X	0	X
Outdoor Gathering Facilities (power, water, shelter, public toilets)	000	X	000	X
Fencing/Bollards	0	0	0	0
Garden Beds	000	0	000	X
Kickabout Area	0	X	000	X
Lighting - Safety/Timed After Hours	000	0	0	X
Lighting - Sport	000	X	X	X
Outdoor Exercise/mobility equipment	0	X	0	X
Paths - Shared - Pedestrian and Cycle - 2.5-3.0m	00	00	00	0
Paths - Primary - Pedestrian 2.0m	00	00	00	0
Paths - Secondary - Pedestrian 1.5m	00	00	00	0
Play space	000	X	000	X
Play space - Waterplay (reticulated system)	0	X	0	X
Public art	0	0	0	0
Public toilets	000	X	000	0
Public Litter Bins	000	0	000	0
Scooter/Bike/Pump Track	0	X	0	X
Seating - chair with back and arms	000	0	000	0
Seating - picnic setting	000	X	000	0
Seating - other	00	0	00	0
Shelter	000	0	000	0
Skate Park	0	X	0	X
Sports - Field	000	X	0	X
Signage - Interpretive/ Wayfinding/ Park Entry/Advisory	000	000	000	000
Tree Canopy	000	000	000	0

All other infrastructure is not permitted unless otherwise agreed

APPENDIX B

Open Space Infrastructure Proposed Levels of Service

Regional

These large spaces are often nature based waterways and conservation sites with seating, paths, scenic views. Social recreation and sporting sites include multiple activities that can accommodate use by larger numbers of people who expect to stay for multiple hours.

At sport sites it is expected that there will be facilities for three or more different sports, accommodating competition play and community events.

Infrastructure must be made of robust materials, with easily replaceable components for ongoing maintenance. Bespoke feature infrastructure can be considered in regional parklands.

Irrigation is supported in district parks in areas of high use or special horticultural requirements. This is to be sourced from recycled water or harvested from stormwater unless agreed by Council.

All parks will have healthy tree canopy between 20-50% tree canopy cover and higher for tree reserves and oasis areas.

Additional design details for infrastructure is provided in the Hume Landscape Guidelines.

X - Not permitted
0 - May have
00 - Should have
000 - Must have

All other infrastructure is not permitted unless otherwise agreed

	Open Space Function			
	Sport	(Waterway) Drainage	Social Recreation	Environmental Conservation
Infrastructure				
BBQ Facilities	000	X	000	0
Bicycle Racks	000	0	000	0
Car Parking - Sealed (permeable or passively irrigating adjacent areas)	000	X	000	0
Court - Tennis or Netball	0	X	0	X
Court - Half-Court or Multisport	00	X	0	X
Dog Off Leash Area (not adjacent to areas of activity)	00	0	00	0
Drinking Fountain/Tap	000	0	000	0
Event Facilities (power, water, shelter, loading area)	000	X	00	X
Outdoor Gathering Facilities (power, water, shelter, public toilets)	000	X	000	X
Fencing/Bollards	0	0	0	0
Garden Beds	000	0	000	X
Kickabout Area	0	0	000	0
Lighting - Safety/Timed After Hours	000	0	00	X
Lighting - Sport	000	X	X	X
Outdoor Exercise/Mobility Equipment	0	X	0	X
Paths - Shared - Pedestrian and Cycle - 2-5-3.0m	00	00	00	0
Paths - Primary - Pedestrian 2.0m	00	00	00	00
Paths - Secondary - Pedestrian 1.5m	00	00	00	00
Shelter	000	0	000	0
Play space	000	X	000	X
Play space - Waterplay (reticulated system)	0	X	0	X
Public Art	0	X	0	X
Public Toilets	000	X	000	0
Public Litter Bins	000	0	000	0
Seating - chair with back and arms	000	0	000	0
Seating - picnic setting	000	0	000	0
Seating - other	00	0	00	0
Scooter/Bike/Pump Track/Skate Elements	0	X	0	X
Sports - Field	000	X	0	X
Signage - Interpretive/ Wayfinding/ Park Entry/Advisory	000	000	000	000
Tree Canopy	000	000	000	0

APPENDIX C

Off-Leash Dog Areas

All public areas of Hume are gazetted as dog on-lead areas. The exception are areas listed as 'dog off-leash areas' (right).

Access for dog off leash activities can vary.

Most locations are large open areas primarily for dog use. Some have time restrictions as they are shared with sportsgrounds or adjacent to schools.

Fenced off-leash areas, also known as "dog parks" offer the opportunity for dogs to exercise in a controlled environment.

Signage showing boundaries, restrictions and dog owner responsibilities is provided at all off leash areas. In an off-leash area the owner is required to:

- be in sight of their dog and ensure the dog responds to its owner's command whether verbal or visual
- carry a leash, one for each dog, under their control
- comply with site-specific rules and regulations, including time restrictions.

Additional dog off leash areas are needed in all precincts except Precinct 1 Sunbury Rural, Precinct 5 Rural, Precinct 7 Valley and Precinct 8 Broadmeadows. New dog areas are to be large, off-leash and not near busy people areas.

Additional areas will seek gazettal including Elmhurst Park Fenced Off Leash Area, Gladstone Park, Mickleham Dog Park, Kalkallo Dog Park.

Sites with time restrictions must have dogs on-lead between 8am-5pm Monday to Friday.

Precinct	Designated Dog Off-Leash Areas	On Active Reserve	Time Restrictions
1	Emu Bottom Wetlands (excluding Horseshoe Bend). 300 Racecourse Road, Sunbury	No	No
2	The Nook. Vaughan Street, Sunbury.	No	No
3	Eric Boardman Reserve. 224-256 Mitchells Lane, Sunbury	Yes	No
3	Heysen Drive Reserve. Between Heysen Drive and Reservoir Road, Sunbury	No	No
3	Langama Park. 89-107 Mitchells Lane, Sunbury.	Yes	No
3	Spavin Drive Lake. Aldridge Drive, Sunbury.	No	No
3	Stewarts Lane Nature Reserve. Between Coates Ct, Streeton Ct and south of Stewarts Lane	No	No
3	Sunbury Park (including Sunbury Dog Park). 60 Harker St, Sunbury	No	No
3	Sunbury Recreation Reserve (Clark Oval). Riddell Road, Sunbury	Yes	No
5	Bulla Recreation Reserve. 17-45 Green Street, Bulla	Yes	No
6	Bradford Avenue Reserve. 26-40 Bradford Ave, Greenvale	Yes	Yes
6	Drummond Street Reserve. 11-25 Drummond Street, Greenvale	Yes	Yes
6	Greenvale Recreation Reserve. Section Road, Greenvale.	Yes	No
7	Carrick Drive Reserve. 300 Carrick Drive, Gladstone Park	No	No
7	John Coutts Reserve. 45-48 Katrina Drive, Gladstone Park	No	No
7	Jack Ginifer Reserve. 206-224 Carrick Drive, Gladstone Park	Yes	No
7	Leo Dineen Reserve. 52-60 Spring Street, Tullamarine	Yes	No
7	Trade Park. 241 Melrose Drive, Tullamarine.	No	No
7	Melrose Drive Reserve. 300 Melrose Drive, Tullamarine	Yes	No
7	Westmeadows Reserve. 136 Ardlie Street, Westmeadows	Yes	Yes
7	Willowbrook Reserve. 317 Mickleham Road, Westmeadows	Yes	No
8	Anderson Reserve. 2-14 Glen Allan Street, Broadmeadows	Yes	No
8	Broadmeadows Valley Park (including Dog Park). Barry Road (near sporting area & east of NS path), Broadmeadows	No	No
8	Broadmeadows Valley Park - Ripplebrook Reserve. Ripplebrook Drive, Broadmeadows	No	No
8	Seabrook Reserve. 20 Goulburn Street, Broadmeadows	Yes	No
8	Will Will Rook Pioneer Cemetery. 220 Camp Road, Broadmeadows	No	No
8	Gibb Reserve. 185 Blair Street, Dallas	Yes	No
8	Laura Douglas Reserve. 57-75 King Street, Dallas	Yes	No
8	Jacana Reserve. 59-79 Johnstone Street, Jacana	Yes	Yes
8	Jacana Valley. 157-159 Johnstone Street, Jacana	No	No
9	Shanklands Linear Parkland (BVP North). Between Somerton & Barry Road, Meadow Heights	No	No
9	Lakeside Drive Reserve. 27-51 Lakeside Drive, Roxburgh Park	Yes	No
10	Bolinda Road Reserve. Via Horne Street, Campbellfield	No	No
10	Seth Raistrick Reserve. 1678-1700 Sydney Road, Campbellfield	Yes	No
11	Progress Reserve. 27-59 Almurta Avenue, Coolaroo.	Yes	Yes
11	Aitken Creek Reserve. Between Hothlyn Drive and railway line, Craigieburn	No	No
11	Craigieburn Dog Park. 127-147 Craigieburn Rd (rear Craigieburn Leisure Centre) Craigieburn	No	No
11	DS Aitken Reserve. 136-170 Craigieburn Road, Craigieburn	Yes	No
11	Hothlyn Drive Reserve. 110-118 Hothlyn Drive, Craigieburn	Yes	Yes
11	Hume Tennis & Community Centre. Cnr Marathon and Newbury Boulevards, Craigieburn	No	Yes
11	Mt Ridley Conservation Reserve. Mt Ridley Road, Craigieburn	No	No
11	Newbury Park. Cnr Newbury and Grand Boulevards (west of hockey fields), Craigieburn	No	No
11	Victor Ian Foster Reserve. 16-32 Pines Way, Craigieburn	Yes	No

APPENDIX C

Dog Prohibited Areas

Some areas are gazetted as prohibited for dog access, even if the dog is on a lead.

The areas are prohibited to protect ecological, cultural and heritage sensitivities.

The list is provided on the right.

Additional prohibited areas will be gazetted if greater protection is needed for sites of sensitivity.

Precinct	Designated Dog Prohibited Areas
1	Albert Road Nature Reserve. 110 Albert Road, Sunbury
1	The Parkway Reserve. 755 Racecourse Road (western section), Sunbury
3	Evans Street Grasslands. 128 Evans Street,, Sunbury
3	Mumilam Korobine. 76 Fullwood Drive and 155 Phillip Drive, Sunbury
4	Sunbury Cemetery. 88 Shield Street, Sunbury
5	Martin Dillon Reserve. Wildwood Road (near 400), Wildwood
8	Maygar Grasslands. 11 Academy Drive, Broadmeadows
10	Somerton Red Gum Reserve. 193B Hume Highway, Somerton
11	Amberfield Grasslands. 361 Craigieburn Road, Craigieburn
13	Kalkallo Commons. 100-130 Hunter Street and 56 Mitchell Street, Kalkallo.

APPENDIX D - LIST OF OPEN SPACE RESERVES AND FUNCTION

Precinct 1 Sunbury Rural - Open Space Reserves 2024						
No	Name	Hierarchy	Area	Primary Function	Secondary Function	Suburb
1	Emu Bottom Wetlands	Regional <i>Jacksons Ck biik wurrdha Regional Parklands</i>	42ha	Drainage	Conservation	Sunbury
2	The Glade		21ha	Drainage	Conservation	Sunbury
3	Albert Road Nature Reserve (restricted access)	Neighbourhood	15ha	Conservation	Linear links & trails	Sunbury
4	The Parkway Nature Reserve (restricted access)	Neighbourhood	15ha	Drainage	Conservation	Sunbury
5	Blind Creek Headwaters Nature Reserve (restricted access)	Neighbourhood	103ha	Drainage	Conservation	Sunbury
6	Settlers Way Nature Reserve (restricted access)	Local	1.5ha	Drainage	Conservation	Sunbury
7	Knox Bridge Nature Reserve	Local	1ha	Drainage	Conservation	Sunbury

Precinct 2 Lancefield Road - Open Space Reserves 2024						
No	Name	Hierarchy	Area	Primary Function	Secondary Function	Suburb
1	The Nook & Bicentennial Park	Regional <i>Jacksons Ck biik wurrdha Regional Parklands</i>	2.9ha	Drainage	Social Recreation	Sunbury
2	Jacksons Creek biik wurrdha Parklands (upcoming)		6ha	Drainage	Conservation	Sunbury
3	Nook to Skyline		38ha	Drainage		Sunbury
4	John McMahon Reserve	District	18ha	Sports	Social Recreation	Sunbury
5	Emu Creek Parklands (proposed)	District	12ha 100+ha	Drainage	Conservation	Sunbury
6	Goonawarra Public Golf Course	District	62ha	Sports	Drainage	Sunbury
7	Goonawarra Retarding Basin	Neighbourhood	2.2ha	Drainage	Linear Links & Trails	Sunbury
8	Tulsa Drive Reserve	Neighbourhood	1.5ha	Sports	Social Recreation	Sunbury
9	Village Green Rolling Meadows	Neighbourhood	1.7ha	Social Recreation	Linear Links & Trails	Sunbury
10	Vista Park	Neighbourhood	1ha	Social Recreation	Linear Links & Trails	Sunbury
11	Harvard Court Reserve	Neighbourhood	1ha	Linear Links & Trails	Social Recreation	Sunbury
12	Empty Road Wetlands	Neighbourhood	3.2ha	Drainage	Linear Links & Trails	Sunbury
13	Bardsley Crescent Park (upcoming)	Neighbourhood	0.9ha	Social Recreation		Sunbury
14	Lollipop Crescent Park	Local	0.7ha	Social Recreation	Linear Links & Trails	Sunbury
15	Kiwanis Park	Local	0.4ha	Social Recreation	Linear Links & Trails	Sunbury
16	Spyglass Court Reserve	Local	0.4ha	Social Recreation		Sunbury
17	Muirfield Drive Playground	Local	0.4ha	Social Recreation		Sunbury
18	Turnberry Drive Reserve	Local	0.2ha	Social Recreation	Linear Links & Trails	Sunbury
19	Balliol Common Reserve	Local	0.1ha	Social Recreation		Sunbury
20	Carnoustie Drive Tree Reserve	Local	0.1ha	Tree Reserve	Ancillary Spaces	Sunbury
21	The Skyline Tree Reserve	Local	0.5ha	Linear Links & Trails	Tree Reserve	Sunbury
22	Ransford Drive Reserve	Local	1.6ha	Drainage	Linear links & trails	Sunbury
23	Raes Road Tree Reserve	Local	2.8ha	Tree Reserve		Sunbury
24	Cawl Court Tree Reserve	Local	0.04ha	Tree Reserve		Sunbury
25	Lakes Drive Tree Reserve	Local	0.1ha	Ancillary Spaces	Tree Reserve	Sunbury
26	Ainsdale Court Tree Reserve	Local	0.1ha	Drainage	Tree Reserve	Sunbury
27	Muirfield Drive Tree Reserve	Local	0.1ha	Drainage	Tree Reserve	Sunbury
28	Mere Court Tree Reserve	Local	0.1ha	Drainage	Tree Reserve	Sunbury
29	St Andrews Court Tree Reserve	Local	0.1ha	Tree Reserve		Sunbury
30	La Perouse Tree Reserve	Local	0.1ha	Ancillary Spaces	Tree Reserve	Sunbury
31	Francis Boulevard Tree Reserve	Local	0.3ha	Tree Reserve	Linear Links & Trails	Sunbury
32	Sunningdale Tree Reserve	Local	0.7ha	Tree Reserve		Sunbury
33	Lancefield Road Linear Reserve	Local	2.8ha	Linear Links & Trails	Tree Reserve	Sunbury
34	Dutch Road Linear Reserve	Local	1.6ha	Linear Links & Trails	Ancillary Spaces	Sunbury
35	Winged Foot Court Reserve	Local	0.6ha	Tree Reserve		Sunbury
36	Racecourse Road Linear Reserve	Local	0.7ha	Linear Links & Trails	Tree Reserve	Sunbury
Plus 7+ walkways and Goonawarra Public Golf Course						

Precinct 3 Sunbury - Open Space Reserves 2024

No	Name	Hierarchy	Area	Primary Function	Secondary Function	Suburb	
1	Mt Holden Parklands	Regional	42ha	Conservation	Linear Links & Trails	Sunbury	
2	Maguire Street Reserve	Regional	1ha	Drainage	Linear Links & Trails	Sunbury	
3	Powlett Street Nature Reserve	Jacksons Ck biik wurrdha Regional Parklands	0.4ha	Drainage	Conservation	Sunbury	
4	Blind Creek Parklands	Regional	45ha	Drainage	Conservation	Sunbury	
5	Stewarts Lane Nature Reserve		10ha	Drainage	Conservation	Sunbury	
6	Sunbury Recreation Reserve		Blind Creek Parklands	20ha	Sports (D)	Social Recreation (D)	Sunbury
7	Beckview Crescent Reserve		1ha	Linear Links & Trails	Social Recreation (L)	Sunbury	
8	Bannon Avenue Reserve		0.4ha	Social Recreation (L)	Linear Links & Trails	Sunbury	
9	Kismet Creek Parklands	District	25ha	Drainage	Linear Links & Trails	Sunbury	
10	Spavin Lake Reserve		Kismet Creek Parklands	6.5ha	Drainage	Conservation	Sunbury
11	Kismet Creek - Canterbury Avenue (upcoming)		11.7ha	Drainage	Conservation	Sunbury	
12	Eric Boardman Reserve	District	12ha	Sports	Social Recreation	Sunbury	
13	Langama Park	District	8ha	Sports	Social Recreation (N)	Sunbury	
14	Harpers Creek Parklands	Neighbourhood Harpers Creek Parklands	8ha	Drainage	Linear Links & Trails	Sunbury	
15	Waugh Park		4ha	Drainage	Social Recreation	Sunbury	
16	Evans Street Grassland Nature Reserve	Neighbourhood	3.5ha	Conservation		Sunbury	
17	Kokoda Drive Nature Reserve (restricted access)	Neighbourhood	11ha	Conservation		Sunbury	
18	Darr Banneem Nature Reserve	Neighbourhood	11ha	Conservation	Linear Links & Trails	Sunbury	
19	McEwen Drive Reserve	Neighbourhood	3.5ha	Sports	Social Recreation	Sunbury	
20	Sunbury Park	Neighbourhood	6ha	Social Recreation		Sunbury	
21	Acheron Court Park	Neighbourhood	1ha	Social Recreation		Sunbury	
22	Lillee Park	Neighbourhood	1ha	Social Recreation	Linear Links & Trails	Sunbury	
23	Century Park	Neighbourhood	1.1ha	Social Recreation	Linear Links & Trails	Sunbury	
24	Forrest Street Reserve	Neighbourhood	1.4ha	Social Recreation	Linear Links & Trails	Sunbury	
25	Roger Free Park	Neighbourhood	1.5ha	Social Recreation	Linear Links & Trails	Sunbury	
26	Sheffield Park	Neighbourhood	1.9ha	Social Recreation	Linear Links & Trails	Sunbury	
27	Mumilam Korobine Nature Reserve	Neighbourhood	1.6ha	Conservation	Social Recreation	Sunbury	
28	Emu Road Nature Reserve	Neighbourhood	2.1ha	Conservation		Sunbury	
29	Free Crescent Nature Reserve (restricted access)	Neighbourhood	1.5ha	Conservation		Sunbury	
30	Billy Goat Creek Parklands	Neighbourhood	1.5ha	Drainage	Conservation	Sunbury	
31	Swift Parrot Nature Reserve	Neighbourhood	1.5ha	Conservation		Sunbury	
32	Barrington Lane Reserve	Neighbourhood	1.7ha	Drainage	Tree Reserve	Sunbury	
33	Googly Park	Neighbourhood	1.5ha	Drainage	Tree Reserve	Sunbury	
34	Brigade St Linear Reserve	Neighbourhood	1.8ha	Linear Links & Trails	Tree Reserve	Sunbury	
35	Heysen Drive Reserve	Neighbourhood	8.5ha	Linear Links & Trails	Social Recreation	Sunbury	
36	Gruner Street Park	Neighbourhood	1ha	Social Recreation		Sunbury	
37	Off Stump Park	Local	1ha	Social Recreation	Linear Links & Trails	Sunbury	
38	Pearl Iris Park	Local	0.7ha	Social Recreation	Linear Links & Trails	Sunbury	
39	Dowling Court Park	Local	0.6ha	Social Recreation	Linear Links & Trails	Sunbury	
40	Lawson Street Reserve	Local	0.6ha	Social Recreation	Linear Links & Trails	Sunbury	
41	Gosse-Cowper Reserve	Local	0.6ha	Social Recreation	Linear Links & Trails	Sunbury	

Precinct 3 Sunbury - Open Space Reserves 2024 (continued)

No	Name	Hierarchy	Area	Primary Function	Secondary Function	Suburb
42	Thomas Millett Park	Local	0.8ha	Social Recreation	Linear Links & Trails	Sunbury
43	Geranium Drive Reserve	Local	0.3ha	Social Recreation	Linear Links & Trails	Sunbury
44	Pippit Way Park	Local	0.3ha	Social Recreation	Linear Links & Trails	Sunbury
45	Angela Potts Park	Local	1ha	Social Recreation	Linear Links & Trails	Sunbury
46	Sunbury Village Green	Local	0.6ha	Social Recreation		Sunbury
47	Dobell Avenue Reserve	Local	0.3ha	Social Recreation		Sunbury
48	Kingsley Drive Reserve	Local	0.2ha	Social Recreation		Sunbury
49	Logan Court Reserve	Local	0.2ha	Social Recreation		Sunbury
50	Thornton Avenue Reserve	Local	0.2ha	Tree Reserve		Sunbury
51	Fraser Court Reserve	Local	0.2ha	Social Recreation	Linear Links & Trails	Sunbury
52	Hume Street Reserve	Local	0.5ha	Social Recreation		Sunbury
53	Bridle Street Reserve	Local	0.2ha	Social Recreation	Linear Links & Trails	Sunbury
54	De Lisle Avenue Playground	Local	0.2ha	Social Recreation	Linear Links & Trails	Sunbury
55	Dolan Court Reserve	Local	0.2ha	Social Recreation	Linear Links & Trails	Sunbury
56	Curtin Drive Reserve	Local	4.3ha	Linear Links & Trails	Social Recreation	Sunbury
57	Keith Avenue Reserve	Local	0.3ha	Social Recreation	Linear Links & Trails	Sunbury
58	Gibson Court Reserve	Local	0.2ha	Social Recreation	Linear Links & Trails	Sunbury
59	Lachlan Court Reserve	Local	0.5ha	Social Recreation	Linear Links & Trails	Sunbury
60	Leo O'Brien Reserve	Local	0.1ha	Social Recreation	Linear Links & Trails	Sunbury
61	Meldrum-McCubbin Reserve	Local	0.4ha	Social Recreation	Linear Links & Trails	Sunbury
62	Scullin Court Reserve	Local	0.4ha	Social Recreation	Linear Links & Trails	Sunbury
63	Tower Court Reserve	Local	0.3ha	Social Recreation	Linear Links & Trails	Sunbury
64	Yellow Gum Boulevard Reserve	Local	0.3ha	Social Recreation	Linear Links & Trails	Sunbury
65	Anderson Road Reserve	Local	0.1ha	Social Recreation	Ancillary Spaces	Sunbury
66	Carlson Street Reserve	Local	0.5ha	Social Recreation	Ancillary Spaces	Sunbury
67	Ruthven Street Reserve	Local	0.4ha	Social Recreation		Sunbury
68	Abella Court Reserve	Local	0.6ha	Social Recreation	Linear Links & Trails	Sunbury
69	Wentworth Court Reserve	Local	0.2ha	Linear Links & Trails	Social Recreation	Sunbury
70	Darwin Street Reserve	Local	0.04ha	Tree Reserve	Ancillary Spaces	Sunbury
71	Davenport Tree Reserve	Local	0.1ha	Tree Reserve		Sunbury
72	De Lisle Avenue Tree Reserve	Local	0.2ha	Tree Reserve	Ancillary Spaces	Sunbury
73	Holland Road Tree Reserve	Local	0.02ha	Tree Reserve	Ancillary Spaces	Sunbury
74	Kereford Place Tree Reserve	Local	0.03ha	Tree Reserve		Sunbury
75	Rosenthal-Jersey Tree Reserve	Local	0.01ha	Tree Reserve		Sunbury
76	Kerrisdale Place Tree Reserve	Local	0.1ha	Tree Reserve		Sunbury
77	Bannon Avenue Tree Reserve	Local	0.2ha	Tree Reserve	Ancillary Spaces	Sunbury
78	Rosenthal Boulevard Tree Reserve	Local	0.01ha	Tree Reserve		Sunbury
79	Pidgeon Tree Reserve	Local	0.1ha	Tree Reserve		Sunbury
80	Pimelea Street Tree Reserve	Local	0.1ha	Tree Reserve		Sunbury
81	Wilson Lane Tree Reserve	Local	0.2ha	Tree Reserve		Sunbury
82	Carmel Edmends Tree Reserve	Local	0.6ha	Tree Reserve		Sunbury
83	Racecourse Road Linear Reserve	Local	1ha	Linear Links & Trails	Tree Reserve	Sunbury
84	Riddell Road Linear Reserve	Local	1ha	Linear Links & Trails	Tree Reserve	Sunbury
85	Webb Court Nature Reserve	Local	2ha	Conservation	Linear Links & Trails	Sunbury
Plus 5 local reserves and 62+ walkways						

Precinct 4 Redstone - Open Space Reserves 2024

No	Name	Hierarchy	Area	Primary Function	Secondary Function	Suburb
1	Holden Flora Reserve (Parks Vic) (restricted access)	Regional <i>Jacksons Creek biik wurrdha Regional Parklands</i>	94ha	Drainage	Conservation	Sunbury
2	Redstone Hilltop Park (upcoming)		17ha	Social Recreation	Conservation	Sunbury
3	Jacksons Hill Reserve		7ha	Conservation	Social Recreation (N)	Sunbury
4	Jacksons Creek biik wurrdha Parklands		1.7ha	Linear Links & Trails	Tree Reserve	Sunbury
5	Apex Park		2ha	Social Recreation (N)	Linear Links & Trails	Sunbury
6	Jacksons Park (incl. Galaxyland)	Regional	5ha	Social Recreation (D)	Conservation	Sunbury
7	Harpers Creek Parkland (proposed)	District <i>Harpers Creek Parklands</i>		Drainage	Linear Links & Trails	Sunbury
8	Wanginu Park		13ha	Conservation	Linear Links & Trails	Sunbury
9	Sunbury Cemetery	District	11ha	Ancillary	Linear Links & Trails	Sunbury
10	Emu Creek Parklands (proposed)	District		Drainage	Conservation	Sunbury
11	Kathleen Aitken Park	Neighbourhood	2.5ha		Linear Links & Trails	Sunbury
12	Sheoak Nature Reserve	Neighbourhood	9.5ha	Conservation	Linear Links & Trails	Sunbury
13	Sunbury Rail Linear Reserve	Neighbourhood	4ha		Linear Links & Trails	Sunbury
14	Yanada Close Reserve (upcoming)	Local	0.6ha	Social Recreation		Sunbury
15	Florence Lane Reserve	Local	0.3ha	Social Recreation	Linear Links & Trails	Sunbury
16	The Avenue Reserve	Local	0.7ha	Social Recreation	Ancillary Spaces	Sunbury
17	Flycatcher Road Wetlands	Local	1.2ha	Drainage	Linear Links & Trails	Sunbury
18	Nira Drive Reserve	Local	0.2ha	Drainage	Social Recreation	Sunbury
19	Sacred Drive Park	Local	1ha	Social Recreation	Linear Links & Trails	Sunbury
20	Regner Drive Reserve (upcoming)	Local	0.75ha	Social Recreation	Linear Links & Trails	Sunbury
21	Campestre Dve Easement Reserve	Local	2.4ha	Ancillary Spaces	Social Recreation	Sunbury
22	Tanninbrae Drive Reserve	Local	1ha	Drainage	Social Recreation	Sunbury
23	Bellevue Drive Tree Reserve	Local	0.04ha	Tree Reserve		Sunbury
24	Outlook Way Reserve	Local	1.3ha	Linear Links & Trails	Tree Reserve	Sunbury
25	Luana Lane Tree Reserve	Local	0.02ha	Tree Reserve		Sunbury
26	Origin Drive Tree Reserve	Local	0.3ha	Tree Reserve	Linear Links & Trails	Sunbury
27	Palomino Harker Tree Reserve	Local	0.1ha	Tree Reserve	Ancillary Spaces	Sunbury
28	Wanginu-Jackson Linear Reserve	Local	0.7ha	Tree Reserve	Linear Links & Trails	Sunbury
29	O'Brien Street Basin	Local	1.1ha	Drainage	Tree Reserve	Sunbury
30	Kristin Road Tree Reserve	Local	0.05ha	Tree Reserve	Linear links & trails	Sunbury

Plus 10+ walkways

Precinct 5 Rural - Open Space Reserves 2024

No	Name	Hierarchy	Area	Primary Function	Secondary Function	Suburb
1	Maribyrnong River Reserve (Commonwealth & State) (restricted access)	Regional	5.9ha	Drainage	Conservation	Keilor
2	Organ Pipes National Park (Parks Vic) (restricted access)	Regional <i>Jacksons Creek Corridor</i>	54ha	Drainage	Conservation	Keilor
3	Jacksons Creek Reserve (restricted access)		9.7ha	Drainage	Conservation	Bulla
4	Sunbury Pop Festival Nature Reserve (Jacksons Creek biik wurrdha Regional Parklands)		11ha	Drainage	Conservation	Diggers Rest
5	Bulla Recreation Reserve		Regional <i>Bulla Parklands</i>	4ha	Sports (D)	Social Recreation (D)
6	Bulla Hill Railway		12ha	Social Recreation	Conservation (cultural)	Bulla
7	Alister Clark Memorial Rose Garden		0.4ha	Social Recreation		Bulla
8	Quartz Street Nature Reserve (restricted access)	District <i>Deep Creek Corridor</i>	5ha	Drainage	Conservation	Bulla
9	Deep Creek Bed (State) (restricted access)		32ha	Drainage	Conservation	Bulla
10	Deep Creek Reserve (State) (restricted access)		10ha	Conservation		Bulla
11	Trap Street Deep Creek Reserve		1ha	Conservation	Linear Links & Trails	Bulla
12	Martin Dillon Nature Reserve		2.3ha	Drainage	Conservation	Bulla
13	Bulla Bulla Streamside Reserve		0.9ha	Drainage	Conservation	Bulla
14	Konagadera Bridge Nature Reserve		4.6ha	Drainage	Conservation	Oaklands Junction
15	Bulla Cemetery		District	3.2ha	Ancillary Spaces	Social Recreation
16	Aircraft Viewing Reserve (Comm)	District	0.3ha	Social Recreation		Bulla
17	Emu Creek Corridor (State)	District		Drainage	Conservation	Bulla
18	School Lane Nature Reserve (restricted access)	Neighbourhood	3ha	Conservation	Linear Links & Trails	Bulla
19	Sharp Street Reserve	Local	0.4ha	Linear Links & Trails	Tree Reserve	Bulla
20	Bulla Road Tree Reserve	Local	0.2ha	Drainage	Tree Reserve	Bulla

Precinct 6 Greenvale - Open Space Reserves 2024

No	Name	Hierarchy	Area	Primary Function	Secondary Function	Suburb
1	Woodlands Historic Park (Parks Vic)	Regional	838ha	Conservation	Social Recreation	Greenvale
2	Greenvale Recreation Reserve	Regional	60ha	Sports	Social Recreation (D)	Greenvale
3	Greenvale Reservoir Reserve (Parks Vic)	District	38ha	Drainage	Social Recreation	Greenvale
4	Yuroke Creek Parklands	District	24ha	Drainage	Linear Links & Trails	Greenvale
5	Attwood Creek Parklands (Melb Water & Hume CC) (restricted access)	District	17ha	Drainage	Conservation	Greenvale
6	Barrymore Road Recreation Reserve	District	6.6ha	Sports	Social Recreation	Greenvale
7	Mt Aitken Reserve (part)	District	5.3ha	Social Recreation	Linear Links & Trails	Greenvale
8	Greenvale Linear Reserve (Creek)	Neighbourhood	8.5ha	Drainage	Linear Links & Trails	Greenvale
9	Brodies Creek Parklands (upcoming)	Neighbourhood	6ha	Drainage	Social Recreation	Greenvale
10	Greenvale Gardens Reserve	Neighbourhood	4ha	Social Recreation	Sports	Greenvale
11	Greenvale Drive Reserve	Neighbourhood	3.5ha	Social Recreation	Linear Links & Trails	Greenvale
12	Drummond Street Reserve	Neighbourhood	3ha	Sports	Social Recreation	Greenvale
13	Bradford Avenue Reserve	Neighbourhood	3ha	Sports	Social Recreation	Greenvale
14	Charlie Grech Reserve	Neighbourhood	3ha	Social Recreation	Linear Links & Trails	Greenvale
15	Attwood-Greenvale Pipe Track (VWV)	Neighbourhood	3.5ha	Drainage	Linear Links & Trails	Greenvale
16	Kirkham Drive Reserve	Neighbourhood	2.5ha	Drainage		Greenvale
17	Destination Park	Neighbourhood	2ha	Social Recreation	Linear Links & Trails	Greenvale
18	Blossom Drive Nature Reserve	Neighbourhood	3ha	Conservation	Linear Links & Trails	Greenvale
19	Chance Street Wetlands (Melb Water)	Neighbourhood	2.4ha	Drainage	Linear Links & Trails	Greenvale
20	Marquee Circuit Wetlands (Melb Water)	Neighbourhood	2ha	Drainage		Greenvale
21	Heritage Views Reserve	Neighbourhood	1.2ha	Social Recreation	Linear Links & Trails	Greenvale
22	Napoli Park	Neighbourhood	1.7ha	Social Recreation	Linear Links & Trails	Greenvale
23	Renfew Court Reserve	Neighbourhood	1.5ha	Social Recreation	Linear Links & Trails	Greenvale
24	French Road Reserve (upcoming)	Neighbourhood		Drainage	Linear Links & Trails	Greenvale
25	Section Road Nature Reserve	Neighbourhood	1.6ha	Conservation		Greenvale
26	Mickleham Road Linear Reserve (Melb Water)	Neighbourhood	3.8ha	Drainage	Linear Links & Trails	Greenvale
27	Vermillion Drive Linear Reserve	Local	1ha	Drainage	Linear Links & Trails	Greenvale
28	Navigation Road Park	Local	0.7ha	Social Recreation		Greenvale
29	Peak Reserve	Local	0.8ha	Social Recreation		Greenvale
30	Overton Close Reserve	Local	0.4ha	Social Recreation	Linear Links & Trails	Greenvale
31	Wichill Close Playspace	Local	0.3ha	Social Recreation	Linear Links & Trails	Greenvale
32	Rudstone Bend Park	Local	0.2ha	Social Recreation	Linear Links & Trails	Greenvale
33	Compass Drive Park	Local	0.8ha	Social Recreation	Linear Links & Trails	Greenvale
34	Marquee Circuit Reserve	Local	0.7ha	Social Recreation	Linear Links & Trails	Greenvale
35	Greenhaven Drive Nature Reserve	Local	0.8ha		Social Recreation	Greenvale
36	Greenvale Flower Reserves	Local	0.3ha		Social Recreation	Greenvale
37	Hallcroft Road Park	Local	0.7ha	Social Recreation	Linear Links & Trails	Greenvale
38	Saddle Way Reserve (upcoming)	Local	0.5ha	Social Recreation		Greenvale
39	Positano Grove Wetlands	Local	0.7ha	Drainage	Linear Links & Trails	Greenvale
40	Hermitage Drive Linear Reserve	Local	0.7ha	Linear Links & Trails	Social Recreation	Greenvale

Precinct 6 Greenvale - Open Space Reserves 2024 (continued)

No	Name	Hierarchy	Area	Primary Function	Secondary Function	Suburb
41	Somerton-Mickleham Linear Reserve	Local	0.8ha	Linear Links & Trails	Tree Reserve	Greenvale
42	Luster Circuit Linear Reserve	Local	6.4ha	Linear Links & Trails	Tree Reserve	Greenvale
43	Mickleham Road Linear Reserve	Local	3.3ha	Linear Links & Trails	Tree Reserve	Greenvale
44	Somerton Road Linear Reserve	Local	1.4ha	Linear Links & Trails	Tree Reserve	Greenvale
45	Barrymore Road Linear Reserve	Local	0.8ha	Linear Links & Trails	Tree Reserve	Greenvale
46	Firth Way Tree Reserve	Local	0.2ha	Drainage		Greenvale
47	Picadilly Court Reserve	Local	0.4ha	Ancillary Spaces		Greenvale
48	Flourish Reserve	Local	0.2ha	Tree Reserve		Greenvale
49	Edinburgh Court Tree Reserve	Local	0.1ha	Tree Reserve		Greenvale
50	Pony Drive Tree Reserve	Local	0.1ha	Tree Reserve	Linear Links & Trails	Greenvale
51	Cinnibar Street Tree Reserve	Local	0.1ha	Tree Reserve		Greenvale
52	Greenhaven-Edara Tree Reserve	Local	0.04ha	Tree Reserve	Linear Links & Trails	Greenvale
53	Lysterfield Drive Tree Reserve	Local	0.2ha	Tree Reserve	Linear Links & Trails	Greenvale
54	Wardan Avenue Tree Reserve	Local	0.1ha	Tree Reserve	Linear Links & Trails	Greenvale
55	Wallace Drive Reserve	Local	0.2ha	Drainage	Tree Reserve	Greenvale
56	Providence Road Tree Reserve	Local	0.1ha	Tree Reserve		Greenvale
57	Candy Road Reserve	Local	0.8ha	Drainage	Linear Links & Trails	Greenvale
58	Frontier Avenue Reserve	Local	0.03ha	Ancillary Spaces		Greenvale
59	Bellini Drive Basin	Local	1.2ha	Drainage	Linear Links & Trails	Greenvale
60	Darmian Drive Reserve	Local	0.06ha	Social Recreation	Linear Links & Trails	Greenvale
61	Adlington Avenue Tree Reserve	Local	0.02ha	Tree Reserve		Greenvale

Plus 28+ walkways

Precinct 7 Valley - Open Space Reserves 2024						
No	Name	Hierarchy	Area	Primary Function	Secondary Function	Suburb
1	Ripplebrook Drive Reserve	Regional	15.5ha	Social Recreation (N)	Conservation	Westmeadows
2	Broadmeadows Easement	Broadmeadows Valley Park	57ha	Ancillary Spaces	Linear Links & Trails	Westmeadows
3	Jacana Valley Park (part)		58ha	Drainage	Linear Links & Trails	Gladstone Park
4	Jacana Reserve	Regional	8ha	Drainage	Sports (N)	Jacana
5	Moonee Ponds Creek Parklands	Moonee Ponds Creek Parklands	54ha	Drainage	Conservation	Westmeadows
6	Coopers Hill Drive Park		2.5ha	Drainage	Social Recreation (N)	Westmeadows
7	Westmeadows Reserve	Co-Managed Melbourne Water & Hume City	3.5ha	Drainage	Sports (N)	Westmeadows
8	Willowbrook Reserve		5ha	Drainage	Sports (D)	Westmeadows
9	Bent Street Reserve		1.2ha	Drainage	Social Recreation (L)	Westmeadows
10	Gladstone Park Reserve	District	3.6ha	Sports	Social Recreation (N)	Gladstone Park
11	Leo Dineen Reserve	District	4.6ha	Sports	Social Recreation	Tullamarine
12	Elmhurst Park	District	3ha	Social Recreation	Sports	Gladstone Park
13	Attwood Creek Parklands	Neighbourhood	12ha	Drainage	Conservation	Attwood
14	Stonebridge Way Reserve	Attwood Creek Parklands	1ha	Drainage	Social Recreation (L)	Attwood
15	Steele Creek Parklands	Neighbourhood	4.2ha	Drainage	Conservation	Tullamarine
16	Haddon Hall Drive Reserve	Neighbourhood	3.2ha	Social Recreation		Attwood
17	Harricks Crescent Reserve	Neighbourhood	1ha	Social Recreation	Linear Links & Trails	Attwood
18	Attwood to Greenvale Pipetrack (Melbourne Water)	Neighbourhood	3.5ha	Ancillary Spaces	Linear Links & Trails	Attwood
19	Jack Ginifer Reserve	Neighbourhood	3ha	Sports	Social Recreation (L)	Gladstone Park
20	Carrick Drive Reserve	Neighbourhood	3ha	Linear Links & Trails	Tree Reserve	Gladstone Park
21	John Coutts Reserve	Neighbourhood	2.8ha	Social Recreation	Linear Links & Trails	Gladstone Park
22	Trentham Drive Reserve	Neighbourhood	1ha	Social Recreation	Linear Links & Trails	Gladstone Park
23	Trade Park Reserve	Neighbourhood	4.4ha	Social Recreation	Sports	Tullamarine
24	Melrose Drive Reserve	Neighbourhood	2.8ha	Sports	Social Recreation (L)	Tullamarine
25	Derby Street Reserve	Neighbourhood	1.1ha	Social Recreation	Sports	Tullamarine
26	SF Hedger Reserve	Neighbourhood	2ha	Drainage	Social Recreation	Tullamarine
27	Ian Musgrove Reserve	Neighbourhood	1ha	Social Recreation	Linear Links & Trails	Westmeadows
28	Global Drive Reserve	Neighbourhood	1ha			Westmeadows
29	Waipa Reserve	Neighbourhood	1ha	Linear Links & Trails	Social Recreation	Westmeadows
30	Westmeadows Indigenous Community Garden	Neighbourhood	1.7ha	Ancillary Spaces	Social Recreation	Westmeadows
31	Tollkeepers Reserve	Local	0.2ha	Social Recreation	Linear Links & Trails	Attwood
32	Carrick-Elmhurst Reserve	Local	0.9ha	Social Recreation	Linear Links & Trails	Gladstone Park
33	Barrington Crescent Reserve	Local	0.1ha	Social Recreation		Gladstone Park
34	Clarke Drive Reserve	Local	0.1ha	Social Recreation		Gladstone Park
35	Dunfield Drive Reserve	Local	0.2ha	Social Recreation		Gladstone Park
36	Fairbank Avenue Reserve	Local	0.1ha	Social Recreation		Gladstone Park
37	Harcourt Crescent Reserve	Local	0.1ha	Social Recreation		Gladstone Park
38	Vaucluse Avenue Reserve	Local	0.4ha	Social Recreation		Gladstone Park
39	Rylandes Drive Reserve	Local	0.04ha	Ancillary Spaces	Social Recreation	Tullamarine

Precinct 7 Valley - Open Space Reserves 2024 (continued)						
No	Name	Hierarchy	Area	Primary Function	Secondary Function	Suburb
40	Tadstan Drive Reserve	Local	0.04ha	Social Recreation	Linear Links & Trails	Tullamarine
41	Tangamere Avenue Reserve	Local	0.8ha	Social Recreation	Linear Links & Trails	Tullamarine
42	Camp Hill Park	Local	0.3ha	Social Recreation		Tullamarine
43	Dalkeith Avenue Reserve	Local	0.4ha	Social Recreation	Linear Links & Trails	Tullamarine
44	Fisher Grove Reserve	Local	0.1ha	Social Recreation		Tullamarine
45	Lackenheath Drive Reserve	Local	0.3ha	Social Recreation	Linear Links & Trails	Tullamarine
46	Phelan-Burvale Reserve	Local	0.1ha	Social Recreation	Ancillary Spaces	Tullamarine
47	Strathconnan Square Reserve	Local	0.1ha	Social Recreation		Tullamarine
48	Churchill Avenue Reserve	Local	0.2ha	Drainage	Social Recreation	Tullamarine
49	Andlon Court Reserve	Local	0.1ha	Social Recreation		Tullamarine
50	Hillcrest Drive Reserve	Local	0.5ha	Social Recreation	Linear Links & Trails	Westmeadows
51	Parkmore Crescent Reserve	Local	0.8ha	Social Recreation	Linear Links & Trails	Westmeadows
52	Evita-Arjay Reserve	Local	0.2ha	Social Recreation	Linear Links & Trails	Westmeadows
53	Eyre Street Reserve	Local	0.4ha	Social Recreation	Linear Links & Trails	Westmeadows
54	Kelman Court Reserve	Local	0.1ha	Social Recreation		Westmeadows
55	Westmeadows Public Park	Local	0.1ha	Tree Reserve		Westmeadows
56	Tullamarine Linear Reserve	Local	1.6ha	Linear Links & Trails		Tullamarine
57	Alanbrae Entrance Tree Reserve	Local	0.3ha	Tree Reserve	Ancillary Spaces	Attwood
58	Trade Park Tree Reserve	Local	0.3ha	Tree Reserve	Ancillary Spaces	Tullamarine
59	Dudley Court Tree Reserve	Local	0.1ha	Tree Reserve		Gladstone Park
60	Gladstone Park Entrance Tree Reserve	Local	0.08ha	Tree Reserve		Gladstone Park
61	Trumpington Terrace Reserve	Local	0.08ha	Drainage	Tree Reserve	Attwood
62	Belmont Place Tree Reserve	Local	0.02ha	Ancillary Spaces	Tree Reserve	Gladstone Park
63	Broadmeadows Road Linear Reserve	Local	1.3ha	Tree Reserve	Linear Links & Trails	Gladstone Park
64	Dimboola Road Tree Reserve	Local	0.2ha	Tree Reserve	Linear Links & Trails	Westmeadows
65	Aspect Lane Tree Reserve	Local	0.1ha	Linear Links & Trails	Tree Reserve	Westmeadows
66	Hillridge Close Tree Reserve	Local	0.02ha	Tree Reserve	Ancillary Spaces	Westmeadows
67	Hopetoun Court Tree Reserve	Local	0.1ha	Linear Links & Trails	Tree Reserve	Westmeadows
68	Village Crescent Tree Reserve	Local	0.2ha	Linear Links & Trails	Tree Reserve	Westmeadows
69	Mickleham Road Easement Reserve	Local	0.1ha	Linear Links & Trails	Ancillary Spaces	Westmeadows
70	Koala Crescent Tree Reserve	Local	0.1ha	Linear Links & Trails	Tree Reserve	Westmeadows
71	Vista Circuit Tree Reserve	Local	0.2ha	Tree Reserve	Linear Links & Trails	Westmeadows
72	Johnstone Street Tree Reserve	Local	0.3ha	Conservation	Tree Reserve	Westmeadows
73	Nadia Lane Tree Reserve	Local	0.01ha	Tree Reserve	Ancillary Spaces	Westmeadows
74	Tylden Street Reserve	Local	0.4ha	Tree Reserve	Ancillary Spaces	Westmeadows
75	Douglas-Glencara Tree Reserve	Local	0.3ha	Drainage	Linear Links & Trails	Westmeadows
76	Valley Park Boulevard Tree Reserve	Local	0.02ha	Tree Reserve		Westmeadows
77	Duncan Court Tree Reserve	Local	0.1ha	Drainage	Linear Links & Trails	Westmeadows
78	Erinbank Crescent Tree Reserve	Local	0.2ha	Ancillary Spaces	Linear Links & Trails	Westmeadows
79	Parkmore-Vista Linear Reserve	Local	0.2ha	Linear Links & Trails	Tree Reserve	Westmeadows
Plus 25+ walkways						

Precinct 8 Broadmeadows - Open Space Reserves 2024						
No	Name	Hierarchy	Area	Primary Function	Secondary Function	Suburb
1	Broadmeadows Valley Park (part)	Regional <i>Broadmeadows Valley Park</i>	90ha	Conservation	Social Recreation	Broadmeadows
2	John Ilhan Memorial Reserve		19ha	Sports (D)	Social Recreation (D)	Westmeadows
3	Erinbank Crescent Reserve		5.8ha	Social Recreation (N)	Linear Links & Trails	Westmeadows
4	Girgarre Street Reserve		5ha	Social Recreation (N)	Linear Links & Trails	Broadmeadows
5	Jacana Valley Basin (Melb Water)	Regional	14ha	Drainage	Social Recreation	Jacana
6	Johnstone Reserve Jacana Valley	Moonee Ponds Creek Parklands	9ha	Drainage	Social Recreation	Jacana
7	Jacana Reserve Rotary Park		7.5ha	Sports (D)	Linear Links & Trails	Jacana
8	Merlynston Creek Parklands		12ha	Drainage	Linear Links & Trails	Broadmeadows
9	Jack Roper Reserve	District <i>Merlynston Creek Parklands</i>	8ha	Social Recreation (R)	Sports	Broadmeadows
10	Jack Roper Basin (Melb Water)		8ha	Drainage	Social Recreation	Broadmeadows
11	Seabrook Reserve		17.5ha	Drainage	Sports	Broadmeadows
12	Will Will Rook Pioneer Cemetery (Crown)		4.2ha	Ancillary Spaces	Social Recreation	Broadmeadows
13	Laura Douglas Reserve		8.4ha	Drainage	Sports	Dallas
14	Hepburn Street Reserve		2ha	Social Recreation (N)	Linear Links & Trails	Dallas
15	Broadmeadows Town Park	District	2.8ha	Social Recreation	Linear Links & Trails	Broadmeadows
16	Progress Reserve	District	9ha	Sports	Social Recreation	Coolaroo
17	Buchan Street Reserve	District	4.3ha	Social Recreation	Linear Links & Trails	Meadow Heights
18	Barry Road Grasslands	District	7ha	Conservation		Broadmeadows
19	Campbellfield Creek Parkland (Melb Water)	Neighbourhood <i>Campbellfield Creek Parklands</i>	1ha	Drainage	Conservation	Broadmeadows
20	The Gateway Nature Reserve		1ha	Conservation		Broadmeadows
21	Northcorp Lake Reserve		2.6ha	Drainage	Social Recreation (L)	Broadmeadows
22	Gibb Reserve	Neighbourhood	5ha	Sports	Social Recreation	Dallas
23	Anderson Reserve	Neighbourhood	4.4ha	Sports	Social Recreation	Broadmeadows
24	Banksia Gardens	Neighbourhood	2.2ha	Social Recreation	Conservation	Broadmeadows
25	Maygar Grasslands Nature Reserve	Neighbourhood	2.8ha	Conservation	Linear Links & Trails	Dallas
26	Maygar Grey Box Nature Reserve	Neighbourhood	5.2ha	Conservation	Social Recreation	Dallas
27	Bethall Gully Reserve	Neighbourhood	5.7ha	Drainage	Linear Links & Trails	Broadmeadows
28	Dallas Activity Centre	Neighbourhood	1ha	Urban and Civic	Linear Links & Trails	Dallas
29	Kevin De Laine Reserve	Neighbourhood	0.9ha	Social Recreation	Linear Links & Trails	Dallas
30	Olsen Place	Local	0.1ha	Urban and Civic	Linear Links & Trails	Broadmeadows
31	Canadian Court Reserve	Local	0.7ha	Social Recreation	Linear Links & Trails	Meadow Heights
32	John Verkdale Reserve	Local	0.5ha	Social Recreation	Linear Links & Trails	Meadow Heights
33	Broadmeadows Civic Plaza	Local	0.2ha	Urban and Civic	Drainage	Broadmeadows
34	Meadowlink Linear Park	Local	1.1ha	Linear Links & Trails	Social Recreation	Broadmeadows
35	Gavin Street Reserve	Local	0.1ha	Social Recreation	Linear Links & Trails	Jacana
36	Ventnor Crescent Reserve	Local	0.2ha	Social Recreation	Linear Links & Trails	Coolaroo
37	Merricks Street Reserve	Local	0.3ha	Social Recreation	Linear Links & Trails	Broadmeadows
38	Jim Stewart Reserve	Local	0.2ha	Social Recreation		Dallas
39	Upfield Rail Linear Reserve	Local	1.2ha	Linear Links & Trails		Dallas
40	Eldon Street Nature Reserve	Local	0.6ha	Conservation		Broadmeadows

Precinct 8 Broadmeadows - Open Space Reserves 2024 (continued)						
No	Name	Hierarchy	Area	Primary Function	Secondary Function	Suburb
41	Jack Culpin Reserve	Local	0.6ha	Tree Reserve	Linear Links & Trails	Dallas
42	Eltham Street Reserve	Local	0.1ha	Ancillary Spaces	Tree Reserve	Dallas
43	Rubicon-Corinella Tree Reserve	Local	0.1ha	Linear Links & Trails	Tree Reserve	Dallas
44	Kilmore Crescent Tree Reserve	Local	0.1ha	Tree Reserve	Linear Links & Trails	Dallas
45	Cavendish Tree Reserve	Local	0.2ha	Tree Reserve	Linear Links & Trails	Broadmeadows
46	Graham Street Reserve	Local	0.2ha	Ancillary Spaces	Tree Reserve	Broadmeadows
47	Kenley-Uplands- Ceres Reserve	Local	0.3ha	Linear Links & Trails	Drainage	Meadow Heights
48	Blair Street Tree Reserve	Local	0.2ha	Ancillary Spaces	Linear Links & Trails	Dallas
49	James Penrose Reserve	Local	0.3ha	Linear Links & Trails	Tree Reserve	Coolaroo
50	Electric Street Tree Reserve	Local	0.1ha	Tree Reserve	Ancillary Spaces	Broadmeadows
51	Longwood-Berringa Reserve	Local	0.7ha	Linear Links & Trails	Tree Reserve	Broadmeadows
52	Berkely Close Tree Reserve	Local	0.1ha	Tree Reserve		Broadmeadows
53	Broadfield Road Reserve	Local	0.1ha	Ancillary Spaces	Tree Reserve	Broadmeadows
54	Barry Road Linear Reserve	Local	0.5ha	Linear Links & Trails	Tree Reserve	Broadmeadows
55	Riggall Street Linear Reserve	Local	0.2ha	Linear Links & Trails		Broadmeadows
Plus 9+ walkways						

Precinct 9 Roxburgh Park - Open Space Reserves 2024

No	Name	Hierarchy	Area	Primary Function	Secondary Function	Suburb
1	Broadmeadows Valley Park (part)	Regional	49ha	Conservation	Social Recreation (N)	Roxburgh Park
2	Arena Recreation Reserve	District	10.3ha	Sports	Social Recreation	Roxburgh Park
3	Roxburgh Park Recreation Reserve	District	6.7ha	Sports	Social Recreation	Roxburgh Park
4	Shankland Tarcoola Reserve	District	4.5ha	Social Recreation	Ancillary Spaces	Meadow Heights
5	Roxburgh Park Linear Reserve	Neighbourhood	29ha	Ancillary Spaces	Linear Links & Trails	Roxburgh Park
6	Pinnock Reserve	<i>Roxburgh Park Linear Reserve</i>	0.3ha	Social Recreation (L)	Linear Links & Trails	Roxburgh Park
7	Craigieburn Rail Linear Reserve	Neighbourhood	9.2ha	Linear Links & Trails	Social Recreation (L)	Roxburgh Park
8	Lakeside Drive Tree Reserve		6.8ha	Tree Reserve	Linear Links & Trails	Roxburgh Park
9	Shankland Linear Parklands	Neighbourhood	12ha	Drainage	Linear Links & Trails	Roxburgh Park
10	Shankland Lake Reserve	Neighbourhood	6.2ha	Drainage	Social Recreation	Roxburgh Park
11	Matthews Reserve	Neighbourhood	2.4ha	Drainage	Linear Links & Trails	Roxburgh Park
12	St Clair Reserve	Neighbourhood	2.6ha	Drainage	Social Recreation	Roxburgh Park
13	Boyden Square	Neighbourhood	1.8ha	Drainage	Social Recreation	Roxburgh Park
14	Kirwan Park	Neighbourhood	1.7ha	Social Recreation	Drainage	Roxburgh Park
15	Lake Mclvor Reserve	Neighbourhood	4.2ha	Drainage	Linear Links & Trails	Roxburgh Park
16	Roxburgh Park Homestead	Neighbourhood	3ha	Social Recreation	Ancillary Spaces	Roxburgh Park
17	The Knoll Reserve	Neighbourhood	2ha	Linear Links & Trails	Social Recreation	Roxburgh Park
18	Patullos Lane Oval	Neighbourhood	3.3ha	Sports	Social Recreation	Roxburgh Park
19	Roxburgh Park School Shared Oval	Neighbourhood	2.6ha	Sports	Social Recreation	Roxburgh Park
20	Rokewood Reserve	Neighbourhood	1.8ha	Social Recreation	Linear Links & Trails	Meadow Heights
21	Greenvale Catchment Reserve	Neighbourhood	3.2ha	Drainage	Social Recreation	Roxburgh Park
22	Silvester Parade Reserve	Neighbourhood	3.4ha	Social Recreation	Linear Links & Trails	Roxburgh Park
23	Brilliant Street Reserve	Neighbourhood	1.4ha	Social Recreation	Linear Links & Trails	Roxburgh Park
24	Woodlands Linear Reserve	Neighbourhood	3.6ha	Linear Links & Trails	Tree Reserve	Roxburgh Park
25	Somerton Road Linear Reserve	Neighbourhood	3.4ha	Linear Links & Trails	Tree Reserve	Roxburgh Park
26	Redwood Close Reserve	Local	0.5ha	Social Recreation	Linear Links & Trails	Meadow Heights
27	Manley Park	Local	0.9ha	Social Recreation		Roxburgh Park
28	Murchison Square	Local	0.7ha	Social Recreation		Roxburgh Park
29	Melaleuca Reserve	Local	0.1ha	Social Recreation	Linear Links & Trails	Meadow Heights
30	Rearden Park	Local	1ha	Social Recreation		Roxburgh Park
31	Cambridge Crescent Reserve	Local	0.8ha	Social Recreation	Linear Links & Trails	Roxburgh Park
32	Recep Resuloglu Papworth Place Reserve	Local	0.8ha	Social Recreation	Linear Links & Trails	Meadow Heights
33	Fantasy Park	Local	0.8ha	Social Recreation	Linear Links & Trails	Meadow Heights
34	Sheoak Court Reserve	Local	0.3ha	Social Recreation	Linear Links & Trails	Meadow Heights
35	Greensted Grove Reserve	Local	0.2ha	Tree Reserve		Roxburgh Park
36	McKeown Outlook Reserve	Local	0.4ha	Social Recreation		Roxburgh Park
37	Tyrell Reserve	Local	0.5ha	Linear Links & Trails	Social Recreation	Meadow Heights
38	Woodburn Crescent Tree Reserve	Local	0.3ha	Linear Links & Trails	Tree Reserve	Meadow Heights
39	Coram Four Ways Reserve	Local	0.4ha	Linear Links & Trails	Social Recreation	Meadow Heights
40	Huntly Court Reserve	Local	0.9ha	Linear Links & Trails	Tree Reserve	Meadow Heights
41	Zakwell Court Basin	Local	0.6ha	Drainage	Tree Reserve	Coolaroo

Precinct 9 Roxburgh Park - Open Space Reserves 2024 (continued)

No	Name	Hierarchy	Area	Primary Function	Secondary Function	Suburb
42	Hilltop Reserve	Local	0.3ha	Tree Reserve	Conservation	Roxburgh Park
43	Cashmore Place Tree Reserve	Local	0.1ha	Tree Reserve	Linear Links & Trails	Roxburgh Park
44	Crestview Close Tree Reserve	Local	0.1ha	Tree Reserve		Roxburgh Park
45	Lightwood Crescent Reserve	Local	0.1ha	Tree Reserve		Meadow Heights
46	Acacia-Lotus-Hovea Tree Reserve	Local	0.3ha	Linear Links & Trails	Tree Reserve	Meadow Heights
47	Donald Cameron Dve Linear Reserve	Local	0.7ha	Linear Links & Trails	Tree Reserve	Roxburgh Park
48	Pascoe Vale Road Linear Reserve	Local	0.3ha	Ancillary Spaces	Linear Links & Trails	Roxburgh Park
49	Roxburgh Park Drive Tree Reserve	Local	1.1ha	Tree Reserve	Linear Links & Trails	Roxburgh Park
Plus 122+ walkways						

Precinct 10 Somerton - Open Space Reserves 2024

No	Name	Hierarchy	Area	Primary Function	Secondary Function	Suburb
1	Galada Tamboore (west of creek) (Melb Water)	Regional <i>marram baba Merri Creek Regional Parklands</i>	32ha	Drainage	Conservation	Campbellfield
2	Bolinda Road Nature Reserve		18ha	Conservation	Linear Links & Trails	Thomastown
3	Horne Street Reserve		1.8ha	Social Recreation (L)	Linear Links & Trails	Campbellfield
4	Hatty Court Reserve		2.8ha	Social Recreation (N)	Linear Links & Trails	Campbellfield
5	marram baba Merri Creek Parklands (HCC & Melb Water)		13.3ha	Drainage	Social Recreation (L)	Campbellfield
6	Metrolink Circuit Reserve		1.4ha	Drainage	Social Recreation	Campbellfield
7	Bababi Marning Grasslands (Parks Vic) (restricted access)		53ha	Drainage	Conservation	Lalor
8	Northpark Nature Reserve		33ha	Drainage	Conservation	Somerton
9	John Laffan Reserve		15ha	Drainage	Sports	Donnybrook
10	Seth Raistrick Reserve	District	3.2ha	Sports	Social Recreation (N)	Campbellfield
11	Aitken Creek Parklands Confluence (HCC & Melb Water) (restricted access)	District	2.4ha	Drainage	Conservation	Craigieburn
12	Upfield Rail Linear Reserve (restricted access)	Neighbourhood	5ha	Ancillary Spaces	Linear Links & Trails	Dallas
13	Allan Barry Reserve	Neighbourhood	1.4ha	Social Recreation	Linear Links & Trails	Campbellfield
14	William Canning Reserve	Neighbourhood	2ha	Linear Links & Trails	Social Recreation	Campbellfield
15	National Business Park Nature Reserve (restricted access)	Neighbourhood	1.4ha	Conservation		Campbellfield
16	Regional Drive Wetlands (Melb Water) (restricted access)	Neighbourhood	2.6ha	Drainage	Conservation	Somerton
17	Somerton Park	Neighbourhood	1.8ha	Drainage	Social Recreation	Campbellfield
18	Stanley Drive Tree Reserve	Neighbourhood	1.7ha	Tree Reserve		Somerton
19	Somerton Redgum Nature Reserve (restricted access)	Neighbourhood	2.4ha	Conservation		Somerton
20	Roeburne Crescent Reserve	Local	0.4ha	Social Recreation	Linear Links & Trails	Campbellfield
21	Hughes Court Reserve	Local	0.1ha	Social Recreation		Campbellfield
22	Yellowbox Nature Reserve	Local	1.4ha	Conservation		Campbellfield
23	Yellowbox Drive Wetlands (Melb Water) (restricted access)	Local	1.5ha	Drainage	Conservation	Craigieburn
24	Freight Drive Drainage Reserve (restricted access)	Local	2.4ha	Drainage	Conservation	Somerton
25	Foden Wetlands Reserve (restricted access)	Local	1.1ha	Drainage	Ancillary Spaces	Campbellfield
26	Mahoneys Road Reserve	Local	0.8ha	Linear Links & Trails	Tree Reserve	Fawkner
27	Cooper Street Tree Reserve	Local	0.05ha	Tree Reserve	Linear Links & Trails	Upfield
28	Somerton Road Drainage Reserve (Melb Water) (restricted access)	Local	0.4ha	Ancillary Spaces		Campbellfield
29	Transport Drive Reserve	Local	0.5ha	Drainage	Linear Links & Trails	Somerton
30	Fordson Road Reserve	Local	0.9ha	Ancillary Space		Campbellfield
31	Russell-Dunstan Reserve	Local	0.02ha	Tree Reserve		Campbellfield

Plus 3 walkways

Precinct 11 Craigieburn - Open Space Reserves 2024

No	Name	Hierarchy	Area	Primary Function	Secondary Function	Suburb	
1	Mt Ridley Conservation Reserve (Parks Victoria & Hume City)	Regional	150ha	Conservation	Drainage	Mickleham	
2	Craigieburn Anzac Park	Regional	12ha	Sports	Social Recreation (D)	Craigieburn	
3	Golden Sun Moth Park	Regional	3.6ha	Social Recreation	Linear Links & Trails	Craigieburn	
4	Aitken Creek Parklands	Regional <i>Aitken Creek Parklands</i> <i>Co-Managed with Melbourne Water</i>	60ha	Drainage	Linear Links & Trails	Craigieburn	
5	Craigieburn Public Golf Course		64ha	Sports	Linear Links & Trails	Craigieburn	
6	Aitken Confluence Nature Reserve		5.5ha	Drainage	Conservation	Craigieburn	
7	Burt-Kur-Min Reserve		2ha	Conservation	Social Recreation (N)	Craigieburn	
8	Di Maria Nature Reserve (restricted access)		13ha	Drainage	Conservation	Craigieburn	
9	Grevillia Juscelina Nature Reserve (restricted)		11ha	Drainage	Conservation	Craigieburn	
10	Highlands Lake		9.3ha	Drainage	Social Recreation (D)	Craigieburn	
11	Brookfield Boulevard Reserve (upcoming)		12ha	Drainage	Social Recreation (L)	Craigieburn	
12	Malcolm Creek Parklands		Regional	88ha	Drainage	Conservation	Craigieburn
13	Centennial Park Drive Reserve		Regional <i>Malcolm Creek Parklands</i>	11.7ha	Drainage	Social Recreation (D)	Craigieburn
14	Bridgehaven Drive Reserve	0.5ha		Drainage	Social Recreation (L)	Craigieburn	
15	Mt Ridley Hilltop Reserve	District	14ha	Social Recreation (N)	Linear Links & Trails	Craigieburn	
16	Mt Aitken Reserve (part)	District	14ha	Social Recreation (N)	Linear Links & Trails	Craigieburn	
17	Craigieburn Gardens	District	6.5ha	Social Recreation	Linear Links & Trails	Craigieburn	
18	DS Aitken Reserve	District	6ha	Sports	Social Recreation	Craigieburn	
19	Highgate Recreation Reserve	District	10ha	Sports	Social Recreation	Craigieburn	
20	Newbury Hockey & Lacrosse Reserve	District	4ha	Sports (R)	Social Recreation	Craigieburn	
21	Rhyolite Drive Recreation Reserve	District	10.3ha	Sports	Social Recreation	Craigieburn	
22	The Bridges Recreation Reserve	District	10ha	Sports	Social Recreation	Craigieburn	
23	Vantage Boulevard Recreation Reserve	District	9.3ha	Sports	Social Recreation	Craigieburn	
24	Hume Tennis & Community Centre	Neighbourhood	5ha	Sports (R)	Social Recreation	Craigieburn	
25	Parkside Rise Reserve	Neighbourhood	1.1ha	Social Recreation	Linear Links & Trails	Craigieburn	
26	Perisher Drive Reserve	Neighbourhood	2.6ha	Social Recreation	Linear Links & Trails	Craigieburn	
27	The Garlands Linear Reserve	Neighbourhood	1.5ha	Linear Links & Trails	Drainage	Craigieburn	
28	James Malcolm Park	Neighbourhood	1.2ha	Linear Links & Trails	Tree Reserve	Craigieburn	
29	Grand Boulevard Tree Reserve	Neighbourhood	1.1ha	Tree Reserve	Linear Links & Trails	Craigieburn	
30	Grand Boulevard Dve Recreation Reserve	Neighbourhood	5ha	Social Recreation (D)	Sports	Craigieburn	
31	Bellfield Common	Neighbourhood	1.4ha	Social Recreation	Linear Links & Trails	Craigieburn	
32	Central Park Avenue Wetlands	Neighbourhood	1.1ha	Drainage	Linear Links & Trails	Craigieburn	
33	Cimberwood Reserve	Neighbourhood	1.4ha	Social Recreation	Linear Links & Trails	Craigieburn	
34	Dorchester Street Reserve	Neighbourhood	1.4ha	Linear Links & Trails	Social Recreation	Craigieburn	
35	Fairways Lake Reserve	Neighbourhood	1.4ha	Drainage	Linear Links & Trails	Craigieburn	
36	Bridgewater Road Walkways	Neighbourhood	1.7ha	Drainage	Linear Links & Trails	Roxburgh Park	
37	Digitree Avenue Linear Reserve	Neighbourhood	1.1ha	Drainage	Linear Links & Trails	Mickleham	
38	Santa Cruz Reserve	Neighbourhood	1.3ha	Social Recreation	Linear Links & Trails	Roxburgh Park	
39	Grove Road Reserve	Neighbourhood	1.2ha	Social Recreation	Linear Links & Trails	Craigieburn	
40	Hanson Road Reserve	Neighbourhood	4.3ha	Sports	Social Recreation	Craigieburn	
41	Hothlyn Drive Reserve	Neighbourhood	3.2ha	Sports	Social Recreation	Craigieburn	
42	Moir Drive Wetlands	Neighbourhood	2.5ha	Drainage	Linear Links & Trails	Roxburgh Park	
43	Olrig Field	Neighbourhood	1.9ha	Social Recreation	Linear Links & Trails	Craigieburn	
44	Sustainable Park Reserve	Neighbourhood	1.9ha	Social Recreation	Conservation	Craigieburn	

Precinct 11 Craigieburn - Open Space Reserves 2024 (continued)

No	Name	Hierarchy	Area	Primary Function	Secondary Function	Suburb
45	The Greenway Reserve	Neighbourhood	1.6ha	Drainage	Social Recreation	Craigieburn
46	Tiffany Crescent Wetlands	Neighbourhood	2.4ha	Drainage	Linear Links & Trails	Roxburgh Park
47	Trillium Park	Neighbourhood	1.1ha	Social Recreation		Craigieburn
48	Victor Ian Foster Reserve	Neighbourhood	3.1ha	Sports	Social Recreation	Craigieburn
49	Yarcombe Crescent Reserve	Neighbourhood	1.3ha	Social Recreation	Linear Links & Trails	Craigieburn
50	Zambezi Court Reserve	Neighbourhood	2.3ha	Linear Links & Trails	Social Recreation	Roxburgh Park
51	Aitken Hill Pipe Track	Neighbourhood	5.5ha	Drainage	Linear Links & Trails	Roxburgh Park
52	Wisteria Avenue Reserve	Neighbourhood	1.1ha	Linear Links & Trails	Tree Reserve	Craigieburn
53	Watermill Avenue Reserve	Local	0.8ha	Social Recreation	Linear Links & Trails	Craigieburn
54	Marne Drive Reserve	Local	0.9ha	Social Recreation	Linear Links & Trails	Craigieburn
55	Hyde Park Reserve	Local	0.9ha	Social Recreation	Linear Links & Trails	Craigieburn
56	Highlander Drive Park	Local	0.8ha	Social Recreation	Linear Links & Trails	Craigieburn
57	Craigieburn Community Garden	Local	0.4ha	Ancillary Spaces	Social Recreation	Craigieburn
58	Murray Walk Reserve	Local	0.8ha	Linear Links & Trails	Tree Reserve	Craigieburn
59	Elevation Boulevard Reserve	Local	0.8ha	Social Recreation	Linear Links & Trails	Craigieburn
60	Bradshaw Avenue Reserve	Local	0.6ha	Social Recreation	Linear Links & Trails	Craigieburn
61	Brentwick Drive Reserve	Local	0.8ha	Social Recreation	Linear Links & Trails	Craigieburn
62	Brickwood Circuit Reserve	Local	0.7ha	Social Recreation	Linear Links & Trails	Craigieburn
63	Abercam Avenue Reserve	Local	0.7ha	Linear Links & Trails	Tree Reserve	Craigieburn
64	Baronial Way Reserve	Local	0.6ha	Social Recreation	Linear Links & Trails	Craigieburn
65	Mt Piper Rise Reserve	Local	0.5ha	Social Recreation	Linear Links & Trails	Craigieburn
66	Northfield Park	Local	0.6ha	Social Recreation	Linear Links & Trails	Craigieburn
67	Mission Hills Way Reserve	Local	0.8ha	Social Recreation	Linear Links & Trails	Craigieburn
68	Princes Circuit Reserve	Local	0.8ha	Social Recreation	Conservation	Craigieburn
69	Rio Grande Drive Reserve	Local	0.8ha	Drainage	Social Recreation	Craigieburn
70	Sandover Drive Reserve	Local	0.7ha	Social Recreation	Linear Links & Trails	Roxburgh Park
71	Serenity Park	Local	0.8ha	Social Recreation	Linear Links & Trails	Craigieburn
72	Angophora Crescent Reserve	Local	0.4ha	Social Recreation	Linear Links & Trails	Craigieburn
73	Bank Street Reserve	Local	0.3ha	Linear Links & Trails	Social Recreation	Craigieburn
74	Balyang Park	Local	0.1ha	Social Recreation		Craigieburn
75	Carlton Court Reserve	Local	0.2ha	Social Recreation	Linear Links & Trails	Craigieburn
76	Clovelly Drive Reserve	Local	0.5ha	Social Recreation	Linear Links & Trails	Craigieburn
77	Coral-Burn Court Reserve	Local	0.3ha	Linear Links & Trails	Social Recreation	Craigieburn
78	Debonair Parade Reserve	Local	1.3ha	Social Recreation	Linear Links & Trails	Craigieburn
79	Eastgate Road Reserve	Local	0.5ha	Social Recreation	Linear Links & Trails	Craigieburn
80	Flora Hanson Reserve	Local	0.7ha	Ancillary Spaces	Social Recreation	Craigieburn
81	Greenfield Court Reserve	Local	0.5ha	Social Recreation	Linear Links & Trails	Craigieburn
82	Grosvenor Square Reserve	Local	0.3ha	Social Recreation	Linear Links & Trails	Craigieburn
83	Hamilton Hume Reserve	Local	0.7ha	Social Recreation	Linear Links & Trails	Craigieburn
84	Lee Street Reserve	Local	0.3ha	Social Recreation	Linear Links & Trails	Craigieburn
85	Metropolitan Avenue Reserve	Local	0.3ha	Social Recreation	Linear Links & Trails	Craigieburn
86	Northern Crescent Reserve	Local	0.3ha	Social Recreation	Linear Links & Trails	Craigieburn
87	Norval Green Reserve	Local	0.8ha	Social Recreation	Ancillary Spaces	Craigieburn
88	Peterlee Court Reserve	Local	0.4ha	Social Recreation	Linear Links & Trails	Craigieburn

Precinct 11 Craigieburn - Open Space Reserves 2024 (continued)

No	Name	Hierarchy	Area	Primary Function	Secondary Function	Suburb
89	Rokeby Crescent Reserve	Local	0.5ha	Social Recreation	Linear Links & Trails	Craigieburn
90	Midhursts-Trecastle Reserve	Local	0.2ha	Linear Links & Trails	Social Recreation	Craigieburn
91	Spurr-Field Reserve	Local	0.4ha	Social Recreation	Linear Links & Trails	Craigieburn
92	St Andrews Drive Reserve	Local	0.3ha	Social Recreation	Linear Links & Trails	Craigieburn
93	Thorngrove Avenue Reserve	Local	0.8ha	Social Recreation	Linear Links & Trails	Craigieburn
94	Rosette Parade Reserve	Local	0.8ha	Social Recreation	Linear Links & Trails	Craigieburn
95	Wattlebird Street Reserve	Local	0.6ha	Social Recreation		Craigieburn
96	Whitley Crescent Reserve	Local	0.7ha	Social Recreation	Linear Links & Trails	Craigieburn
97	Pembroke Crescent Reserve	Local	0.7ha	Social Recreation	Ancillary Spaces	Craigieburn
98	Dahlia Cres. Nature Reserve (restricted access)	Local	3.3ha	Conservation		Craigieburn
99	Amberfield Nature Reserve	Local	2.1ha	Conservation		Craigieburn
100	Eagle Court Wetland (restricted access)	Local	0.3ha	Drainage	Linear Links & Trails	Craigieburn
101	Bridgewater Road Linear Reserve	Local	0.5ha	Linear Links & Trails	Tree Reserve	Craigieburn
102	Amaroo-Lockerbie Pipe Track (restricted access)	Local	14.5ha	Drainage	Linear Links & Trails	Craigieburn
103	Ben Loman Circuit Tree Reserve	Local	0.1ha	Linear Links & Trails	Tree Reserve	Craigieburn
104	Calibre Avenue Tree Reserve	Local	0.03ha	Ancillary Spaces	Tree Reserve	Craigieburn
105	Hayfield Road Tree Reserve	Local	0.3ha	Tree Reserve	Linear Links & Trails	Craigieburn
106	Central Park Avenue Tree Reserve	Local	0.1ha	Ancillary Spaces	Tree Reserve	Craigieburn
107	Elderberry Street Tree Reserve	Local	0.2ha	Tree Reserve		Craigieburn
108	Gardenia Close Tree Reserve	Local	0.1ha	Tree Reserve	Linear Links & Trails	Craigieburn
109	Flora-Henson Tree Reserve	Local	0.1ha	Tree Reserve	Linear Links & Trails	Craigieburn
110	Gossia Avenue Tree Reserve	Local	0.2ha	Tree Reserve		Craigieburn
111	Grand Boulevard Tree Reserve	Local	0.4ha	Tree Reserve		Craigieburn
112	Heathwood Close Tree Reserve	Local	0.1ha	Tree Reserve		Craigieburn
113	Highbury Tree Reserve	Local	0.1ha	Tree Reserve		Craigieburn
114	Henley Court Tree Reserve	Local	0.1ha	Linear Links & Trails	Ancillary Spaces	Craigieburn
115	Leawood Glade Tree Reserve	Local	0.1ha	Tree Reserve		Craigieburn
116	Innes Place Tree Reserve	Local	0.05ha	Tree Reserve		Craigieburn
117	Kilimanjaro Street Tree Reserve	Local	0.03ha	Tree Reserve		Craigieburn
118	Maloney Avenue Tree Reserve	Local	0.4ha	Linear Links & Trails	Tree Reserve	Craigieburn
119	Moor Park Drive Tree Reserve	Local	0.3ha	Tree Reserve		Craigieburn
120	Punt Street Tree Reserve	Local	0.2ha	Ancillary Spaces	Tree Reserve	Craigieburn
121	Parkside Rise Tree Reserve	Local	0.1ha	Tree Reserve	Ancillary Spaces	Craigieburn
122	Kapalua Place Reserve	Local	0.6ha	Linear Links & Trails	Tree Reserve	Craigieburn
123	Fairways Aitken Entry Reserve	Local	0.03ha	Tree Reserve	Ancillary Spaces	Craigieburn
124	Vantage Boulevard Entry Reserve	Local	0.01ha	Tree Reserve	Ancillary Spaces	Craigieburn
125	Canisby Way Tree Reserve	Local	0.1ha	Linear Links & Trails	Tree Reserve	Craigieburn
126	Redcliffs Crescent Tree Reserve	Local	0.1ha	Tree Reserve	Linear Links & Trails	Craigieburn
127	Rio Grande Drive Tree Reserve	Local	0.04ha	Tree Reserve		Craigieburn
128	Tavistock Court Tree Reserve	Local	0.2ha	Linear Links & Trails	Tree Reserve	Craigieburn
129	Vantage Boulevard Tree Reserve	Local	0.04ha	Linear Links & Trails	Ancillary Spaces	Craigieburn
130	Waterford Park Tree Reserve	Local	0.3ha	Tree Reserve	Ancillary Spaces	Craigieburn
131	Peppertree Parade Reserve	Local	0.1ha	Tree Reserve	Linear Links & Trails	Craigieburn

Precinct 11 Craigieburn - Open Space Reserves 2024 (continued)

No	Name	Hierarchy	Area	Primary Function	Secondary Function	Suburb
132	Eucalyptus Ovata Tree Reserve	Local	0.07ha	Social Recreation	Linear Links & Trails	Craigieburn
133	Northumberland Tree Reserve	Local	0.17ha	Linear Links & Trails	Social Recreation	Craigieburn
134	Ardley Circuit Reserve	Local	0.09ha	Social Recreation	Linear Links & Trails	Craigieburn
135	Craigieburn Bicentennial Park	Local	0.5ha	Social Recreation	Linear Links & Trails	Craigieburn
136	Darwinia Drive Wetlands	Local	1.5ha	Social Recreation	Linear Links & Trails	Craigieburn
137	Dewvale Place Reserve	Local	1.4ha	Social Recreation	Linear Links & Trails	Craigieburn
138	Aitken Creek Conservation Drive Reserve	Local	6.2ha	Drainage	Social Recreation	Craigieburn
139	Escapade Boulevard Reserve	Local	0.6ha	Conservation	Social Recreation	Craigieburn
Plus 136+ walkways						

Precinct 12 Mickleham - Open Space Reserves 2024

No	Name	Hierarchy	Area	Primary Function	Secondary Function	Suburb
1	Mt Ridley Grassy Eucalypt Reserve (Crown) (restricted access)	Regional	61ha 94ha	Conservation		Mickleham
2	Kalkallo Retarding Basin (Melb Water) (restricted access)	Regional	690ha	Drainage	Conservation	Mickleham
3	Mickleham North Linear Parklands (upcoming)	District	25ha	Drainage	Social Recreation	Mickleham
4	Maystone Drive Recreation Reserve	District	9.5ha		Social Recreation	Mickleham
5	Alexo Road Recreation Reserve (upcoming)	District	7.3ha		Social Recreation	Mickleham
6	Elscott Boulevard Recreation Reserve (upcoming)	District	8.9ha		Social Recreation	Mickleham
7	Pasilla Circuit Nature Reserve (upcoming)	Neighbourhood	7ha	Conservation		Mickleham
8	Annadale Park	Neighbourhood	1ha	Social Recreation	Linear Links & Trails	Mickleham
9	Buckwheat Walk Reserve (upcoming)	Neighbourhood	1.1ha	Social Recreation		Mickleham
10	Buckwheat Walk Wetlands (upcoming)	Neighbourhood	2.6ha	Drainage	Conservation	Mickleham
11	Donnybrook Road Wetlands	Neighbourhood	4.6ha	Drainage	Linear Links & Trails	Mickleham
12	Innovation Drive Basin Reserve (restricted access)	Neighbourhood	9.6ha	Drainage	Social Recreation	Mickleham
13	Ginger-Apsley Easement Reserve	Local	12.9ha	Ancillary Spaces	Linear Links & Trails	Mickleham
14	Monomeith Drive Reserve	Local	0.7ha	Social Recreation		Mickleham
15	Pecan Place Reserve	Local	0.7ha	Social Recreation	Linear Links & Trails	Mickleham
16	Pinnacle Park	Local	0.7ha	Social Recreation	Linear Links & Trails	Mickleham
17	Alice Avenue Reserve	Local	0.7ha	Social Recreation	Linear Links & Trails	Mickleham
18	Foundation Park	Local	0.8ha	Social Recreation	Linear Links & Trails	Mickleham
19	Harfield Avenue Reserve	Local	0.8ha	Social Recreation	Linear Links & Trails	Mickleham
20	Highfield Drive Reserve	Local	0.8ha	Social Recreation	Linear Links & Trails	Mickleham
21	Salcey Way Reserve	Local	0.8ha	Social Recreation	Linear Links & Trails	Mickleham
22	Tremaine Avenue Reserve	Local	0.7ha	Social Recreation	Linear Links & Trails	Mickleham
23	Belmore Parade Reserve (upcoming)	Local	0.75ha	Social Recreation	Linear Links & Trails	Mickleham
24	English Street Reserve (upcoming)	Local	0.9ha	Social Recreation	Linear Links & Trails	Mickleham
25	Macadamia Street Reserve (upcoming)	Local	0.6ha	Social Recreation		Mickleham
26	Botwood Street Reserve	Local	0.6ha	Social Recreation		Mickleham
27	Zaatar Street Tree Reserve	Local	0.1ha	Tree Reserve		Mickleham
28	Errol Boulevard Entry Reserve	Local	0,08ha	Tree Reserve		Mickleham
29	Whiteleaf Drive Reserve	Local	0,1ha	Linear Links & Trails	Tree Reserve	Mickleham
30	Porcini Parade Tree Reserve	Local	0.2ha	Tree Reserve	Linear Links & Trails	Mickleham
31	Broassard Road Tree Reserve	Local	0.1ha	Tree Reserve		Mickleham
32	St George Boulevard Reserve	Local	0.5ha	Tree Reserve		Mickleham
33	Polaris Drive Reserves	Local	0.16ha	Tree Reserve		Mickleham

Plus 19+ walkways

Precinct 13 Kalkallo - Open Space Reserves 2024

No	Name	Hierarchy	Area	Primary Function	Secondary Function	Suburb
1	marram baba Merri Creek Parklands (Melb Water)	Regional	15ha 29ha	Drainage	Conservation	Kalkallo
2	Bells Avenue Wetlands	<i>marram baba Merri Creek Regional Parklands</i>	2.8ha	Drainage	Social Recreation (L)	Kalkallo
3	Klady Drive Reserve		0.8ha	Social Recreation (L)	Linear Links & Trails	Kalkallo
4	Quill Reserve		0.3ha	Social Recreation (L)	Linear Links & Trails	Kalkallo
5	Kalkallo Knoll Nature Reserve	District <i>Kalkallo Creek Parklands</i>	11.3ha	Conservation		Kalkallo
6	Kalkallo Township Nature Reserve		1.6ha	Drainage	Conservation	Kalkallo
7	Kalkallo Grasslands Nature Reserve (restricted access)	District	10ha	Conservation		Kalkallo
8	Kalkallo Recreation Reserve	District	10.3ha	Sports	Social Recreation	Kalkallo
9	Antares Parade Recreation Reserve (upcoming)	District	9.5ha	Sports	Social Recreation	Kalkallo
10	Donnybrook Cemetary	Neighbourhood	4.6ha	Ancillary Spaces	Conservation	Kalkallo
11	Arcturus Drive Waterway Reserve	Neighbourhood	10ha	Drainage	Social Recreation	Kalkallo
12	Fenska Street Reserve	Local	0.7ha	Social Recreation	Linear Links & Trails	Kalkallo
13	Roscoe Avenue Reserve	Local	1.5ha	Social Recreation	Linear Links & Trails	Kalkallo
14	Mowamba Street Wetlands (upcoming)	Local	4.5ha	Drainage	Linear Links & Trails	Kalkallo
15	Cilantro Street Reserve (upcoming)	Local	1.8ha	Drainage	Conservation	Kalkallo
16	Bells Avenue Reserve	Local	0.8ha	Social Recreation	Linear Links & Trails	Kalkallo
17	Margot Circuit Reserve	Local	0.7ha	Social Recreation	Linear Links & Trails	Kalkallo
18	Dwyer Street Stony Knoll Reserve (restricted access)	Local	0.6ha	Conservation		Kalkallo
19	Lumin Boulevard Reserve (upcoming)	Local	0.7ha	Social Recreation	Linear Links & Trails	Kalkallo
20	Tungsten Drive Reserve (upcoming)	Local	1.1ha	Social Recreation	Linear Links & Trails	Kalkallo
21	Queensborough Road Linear Reserve (upcoming)	Local	0.7ha	Drainage	Linear Links & Trails	Kalkallo
22	Prestige Drive Tree Reserve	Local	0.2ha	Linear Links & Trails	Tree Reserve	Kalkallo
23	Pronto Drive Tree Reserve	Local	0.2ha	Tree Reserve	Linear Links & Trails	Kalkallo
24	Cameron Street Linear Reserve	Local	0.5ha	Linear Links & Trails	Tree Reserve	Kalkallo
25	Kales Court Tree Reserve	Local	0,02ha	Tree Reserve	Linear links & trails	Kalkallo

Plus 20+ walkways